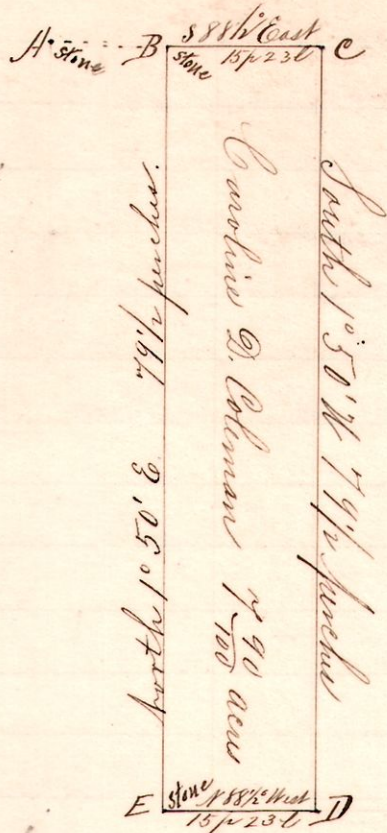


No. 136.

13 14 26 SE 1/4



Notes.

"A" stone at the northwest corner of the Southeast Quarter of Section 26, Tp 14, R. 13.  
 "B" the place of beginning is, a stone on the north line of said quarter S 88 1/2° East 11 furlongs 24 links from A.  
 "C" a post on said north line S 86 1/2° East 15 7/8 23 1/2 " B.  
 "D" a post on the south line of the north half of said quarter South 1° 50' N 79 1/2 furlongs from C.  
 "E" a stone on said south line N 88 1/2° West 15 furlongs 23 links from D, and North 1° 50' East 79 1/2 furlongs to B.

Chaimen:

John Heidler and Louis Parrot

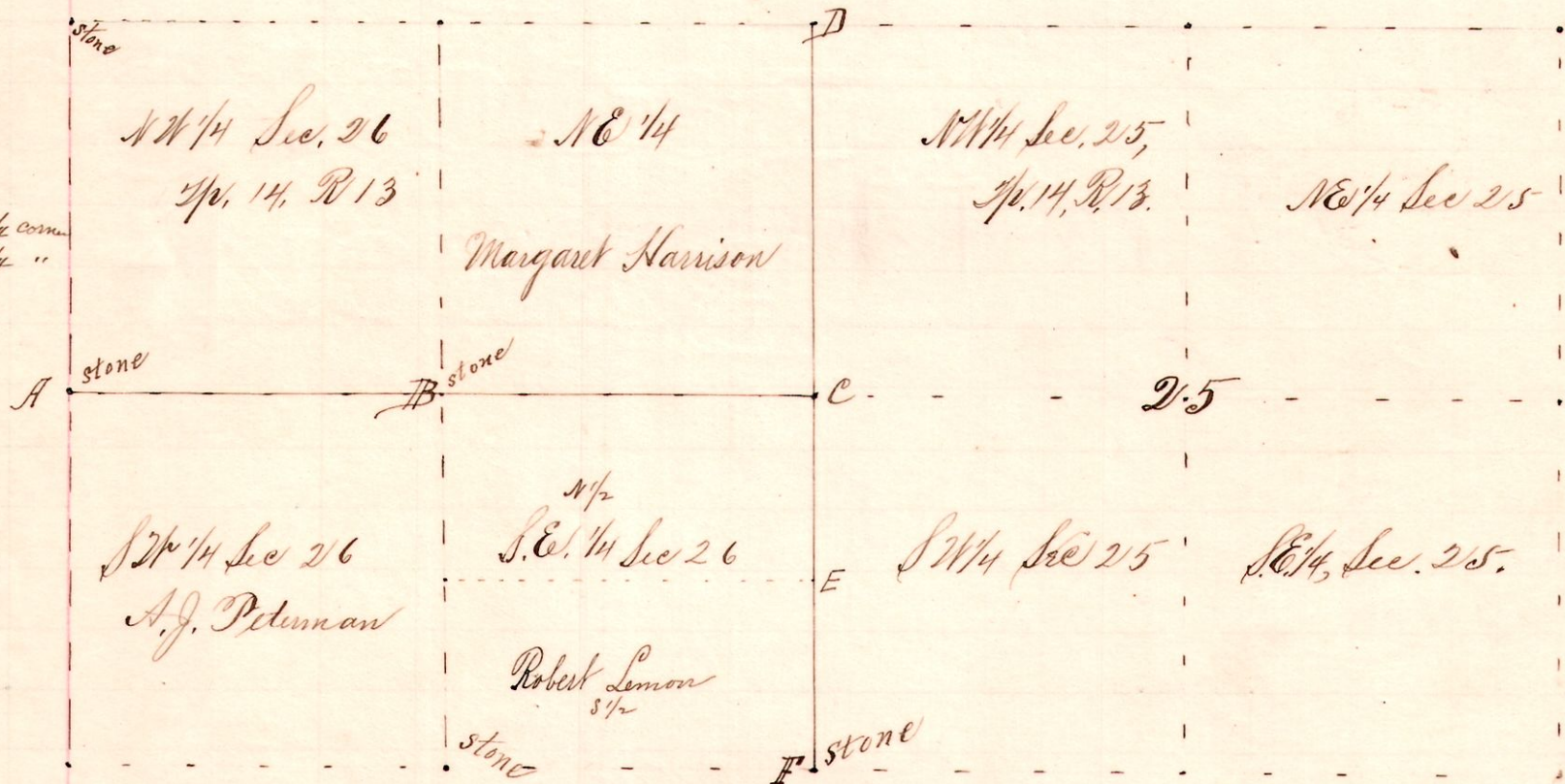
John McClelland and David Smail witnesses

Surveyed for Caroline D. Coleman and other heirs of John Coleman, see, April 4, 1895.

Frank H. Gunt,  
Co. Surveyor.

No. 137.

13 14 { 25 NW 1/4 corner  
26 SE 1/4 "



Notes.

A survey made for Louis Parrot, Margaret Harrison et al April 4, 1895, to establish C, the quarter corner between Sections 25 and 26 Tp 14, R. 13. (Pravie 3/4)  
 We traced the line FC to D between said sections 25 and 26; also the line ABC; at C we found stump of original poplar witness 18 N 31 E 23 links; We planted stone corner; also placed stone at E at half Dr corner SE 1/4 Sec 26.  
 Chaimen Louis Parrot and Uriah Hartman; Others present and assisting John Heidler, John McClelland, Harry Coleman, Wm Coleman, Ed. Kendall.  
 Surveyed and established April 4, 1895

Frank H. Gunt,  
Co. Surveyor,  
Adams Co., O.