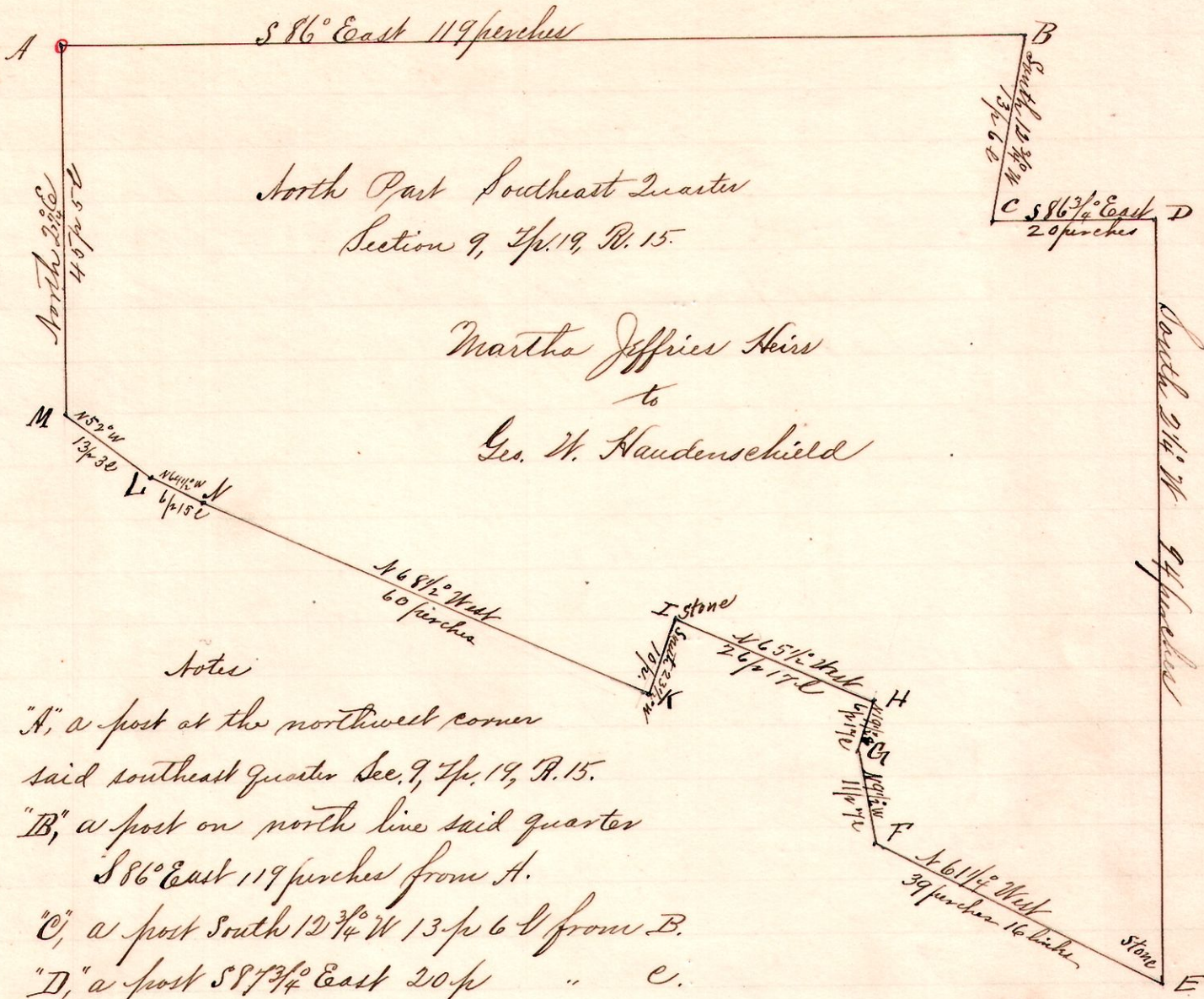


No. 128.

15 19 9 16 1/2



South Part Southeast Quarter
Section 9, T^p. 19, R. 15.

Martha Jeffries Heirs
to
Geo. W. Haudenschield

Notes

- "A", a post at the northwest corner said southeast quarter Sec. 9, T^p. 19, R. 15.
- "B", a post on north line said quarter S 86° East 119 perches from A.
- "C", a post South 12 3/4° W 13 p 6 l from B.
- "D", a post S 86 3/4° East 20 p " C.
- "E", a stone in the Loudonville and Mullsburg Road, South 2 1/4° W 94 perches from D
- "F", a post in said road, N 61 1/4° West 39 p 16 l from E.
- "G", a post in a road North 9 1/2° W 11 p 7 l " F?
- "H", " " " North 19 1/2° E 6 p 17 l " G.
- "I", a stone N 65 1/2° West 26 p 17 l from H.
- "K", a post in Mullsburg and Loudonville road South 23 1/2° W 10 p from I.
- "L", " " " " " N 68 1/2° West 60 p " H.
- "M", " " " " " N 64 1/4° West 6 p 15 l " L
- "N", post in said road, on west line said quarter N 52° W 13 p 36 from L and N 21° E 45 p 5 l to A.

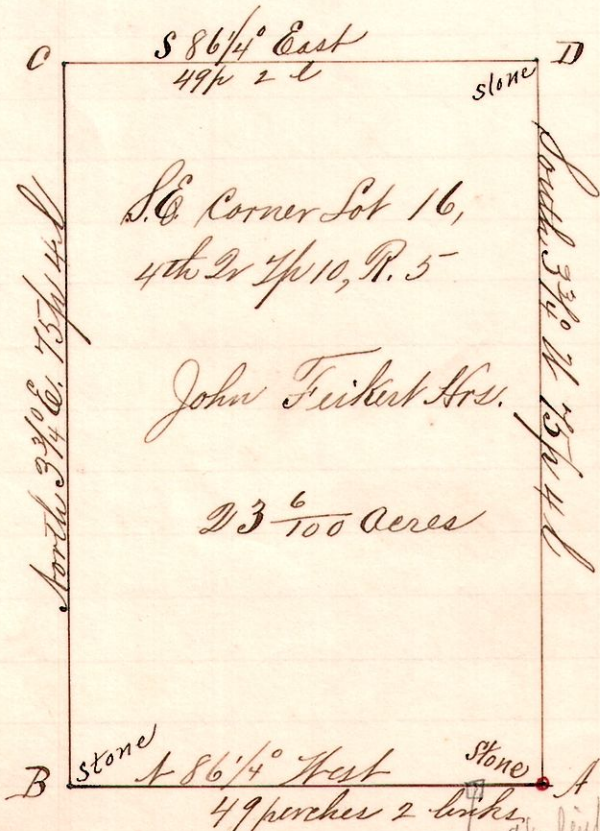
A Survey made for Ed. Jeffries, Geo. W. Haudenschield, et al,

March 28, 1895.

Frank H. Genet,
Co. Surveyor.

R 7th 2nd 1/2th Lot Pt.
5 10 4th 16 30th

No. 129.



S.E. Corner Lot 16,
4th 2nd T^p. 10, R. 5

John Feibert's Heirs.

23 6/100 Acres

Notes.

- "A", stone at the southeast corner Lot 16, 4th 2nd T^p. 10 R. 5.
- "B", a post on the south line said Lot No. 16, N 86 1/4° West 49 perches 2 links from A.
- "C", a post North 3 3/4° E 75 perches 4 links " B.
- "D", a post on the east line of said Lot S 86 1/4° East 49 perches 2 links from C and South 3 3/4° W 75 perches 4 links to A.

Chairmen:

Henry Engel and Chas. Greenwalt
A Survey made for Peter Lettger,
Adam Feibert and Chas. A. Feibert
Administrators of the estate of
John Feibert, deceased; et al. Surveyed March 29, 1895.
Frank H. Genet, Co. Surveyor.