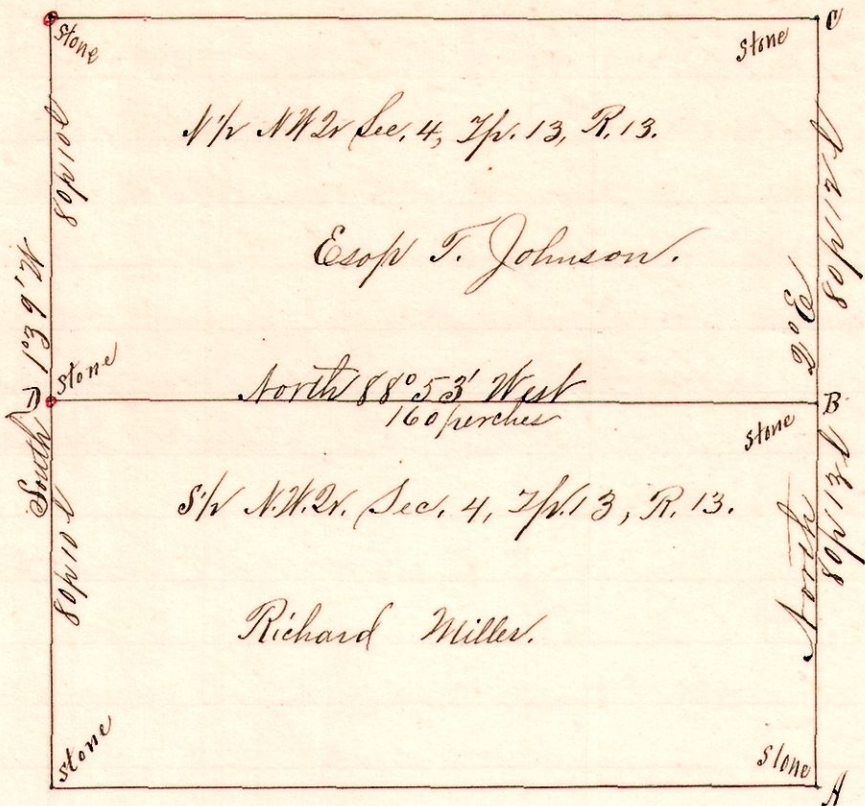


R 1/2 Sec. 2  
13 13 4 NW

No. 122.



Notes.

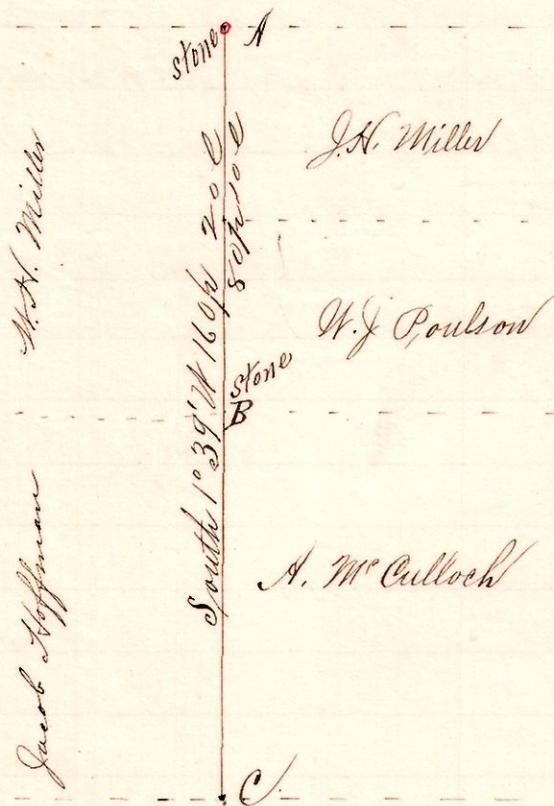
"N", a stone at the south-east corner of the North-West Quarter Section 4, Township 13, Range 13.  
 "C", a stone at the northeast corner of said quarter North 2° East 160 perches from A.  
 "B", a stone at the half quarter corner, on the east line of said quarter.  
 "D", a large rock at the west half quarter corner N 88° 53' West 160 perches from B.

A survey made for Esop T. Johnson, Richard Miller, et al,  
 Mch, 19, 1895.

Frank H. Genet,  
 County Surveyor.

13 13 { 4 SW  
5 SE }

No. 123.



Notes

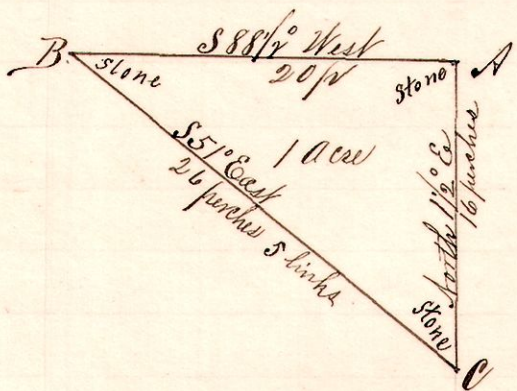
"A", stone at the Northwest corner of the SW 1/4 Sec 4 Tp 13 R 13. Original Hickory good.  
 "B", a stone at the half quarter post on the west line of said quarter South 1° 39' West 80 perches from A.  
 "C", the southwest corner of said SW 1/4 Sec. 4 and the southeast corner of the southeast quarter of Sec. 5, Tp. 13, R. 13, South 1° 39' West 80 perches from B.

Surveyed for Richard Miller W. J. Poulson, et al, March 19, 1895.

Chairman  
 Aaron M. Culloch  
 John Smail } sworn,  
 Victor Genet & Arthur Crawford, markers  
 Frank H. Genet  
 County Surveyor.

13 13 14 NE E

No. 124.



Notes.

"A" stone, on the east line of the northeast quarter Sec 12 Tp 13 R 13, S 1 1/2° West 16 perches 21 l from the N.E.  
 "B", a stone on the east side of the public road S 88 1/2° West 20 perches from A.  
 "C", a stone in said road and on said east line S 51° East 26 perches 5 l from B.

Surveyed John and William N. Hastings from P. M. Deetz,  
 March 23, 1895.

Frank H. Genet,  
 County Surveyor.