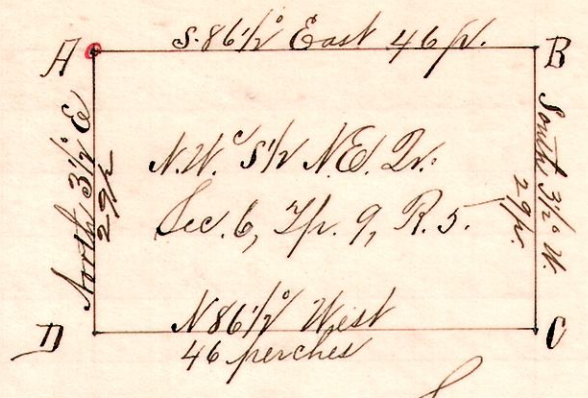


R 5/4 Sec 2,
5 9 6 N.E.W

No. 113.



Jan. 9, 1895.

Surveyed for Alex. E. Miller, David E. Miller, et al,

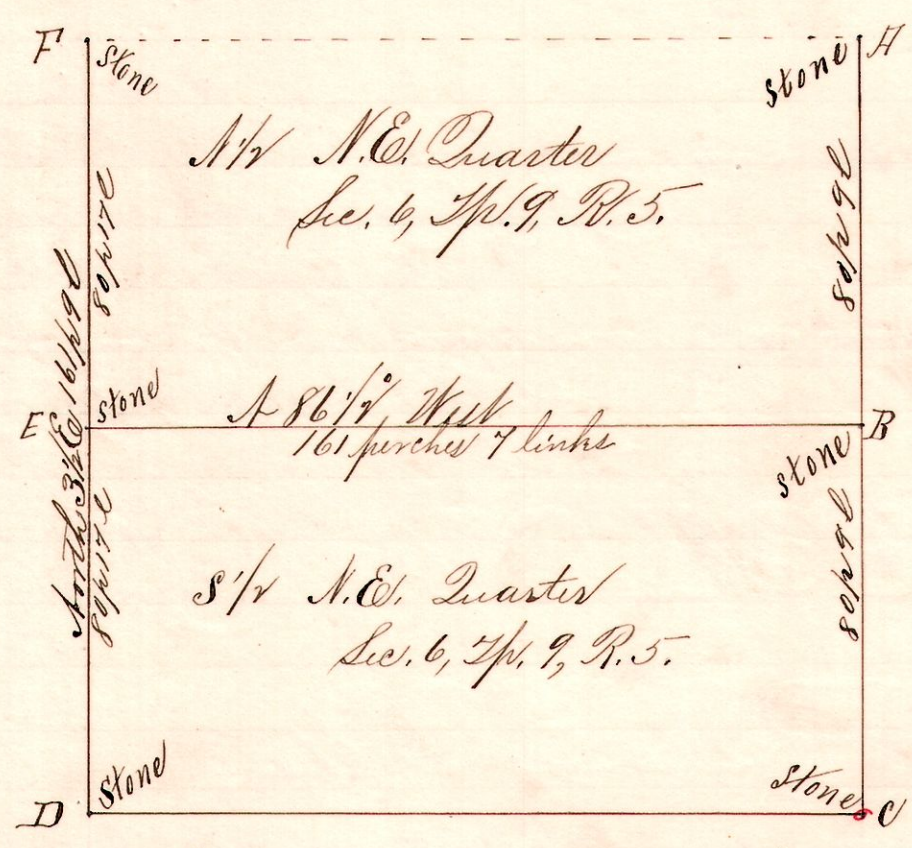
Frank H. Gunt,
County Surveyor.

Notes.

"A" stone at the northwest corner of the
 S 1/4 of the N.E. 1/4 section 6, Twp. 9, R. 5.
 "B," a post on north line S 86 1/2° East 46 ft. from A.
 "C," a post south 3 1/2° W 29 perches from B.
 "D," a post on the west line N 86 1/2° West
 46 ft. from C, 2d North 3 1/2° E 29 perches to A.

5 9 6 N.E.

No. 114.



Surveyed for Alex. E., David E., and Emanuel Miller, et al, Jan. 9, 1895.

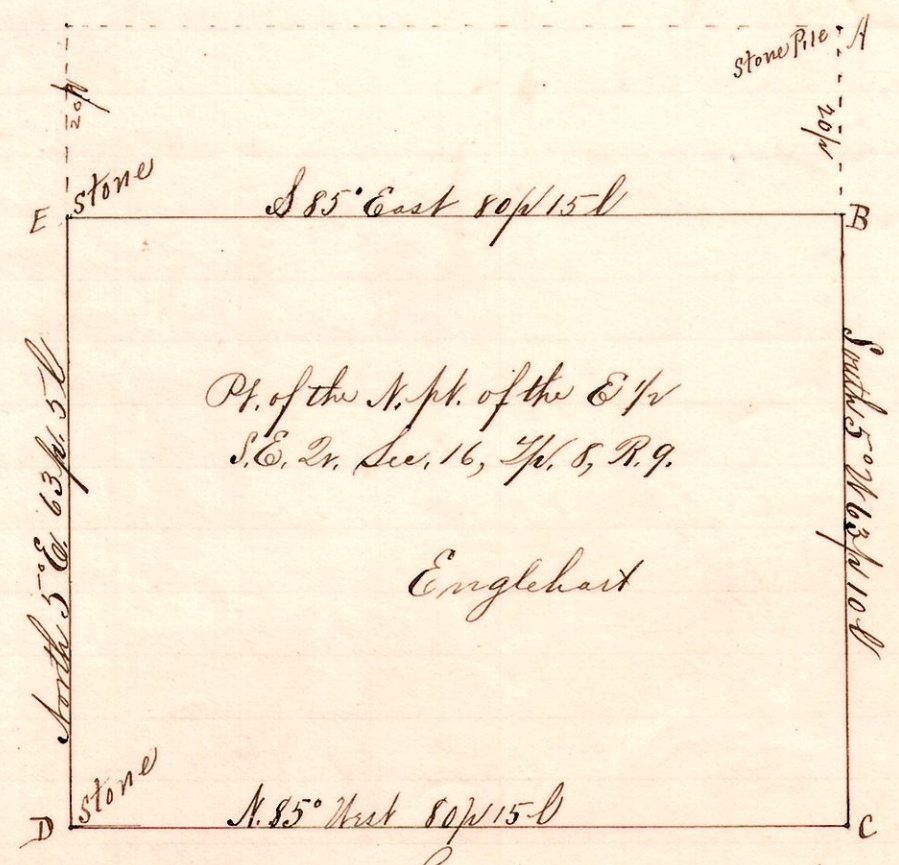
Frank H. Gunt,
County Surveyor.

Notes.

"A" stone at the northeast
 corner of the northeast
 quarter, Sec. 6, Twp. 9, R. 5.
 "C," a stone at the southeast
 corner said quarter South
 3 1/2° W 161 ft 18 l from A.
 "D," a stone at the S.W. said 1/4.
 "F," a stone at the N.W. said
 quarter North 3 1/2° E 161 ft 9 l
 from D.
 Placed stone corners at E
 and B, equi-distant from
 A and C, F and D.

9 8 16 S.E. 1/4.

No. 115



Surveyed and appraised by order of Common Pleas Court,
March 2, 1895.

Frank H. Gunt, Co. Surveyor.

Notes.

"A," stone pile at N 5° S.E. 1/4 Sec. 16 Twp. 8 R. 9.
 "B," the place of beginning, a post
 on east line South 5° W 20 ft from A.
 "C," post on said east line South
 5° W 63 ft 10 l from B.
 "D," stone at S.W. 1/4 said S.E. 1/4
 N 85° West 80 ft 15 l from C.
 "E," a post North 5° E 63 ft 5 l
 from D 2d S 85° East 80 ft 15 l to B.
 chainmen

A. C. Workman
 A. B. Korn
 L. Remington and R. H. Simmons markers