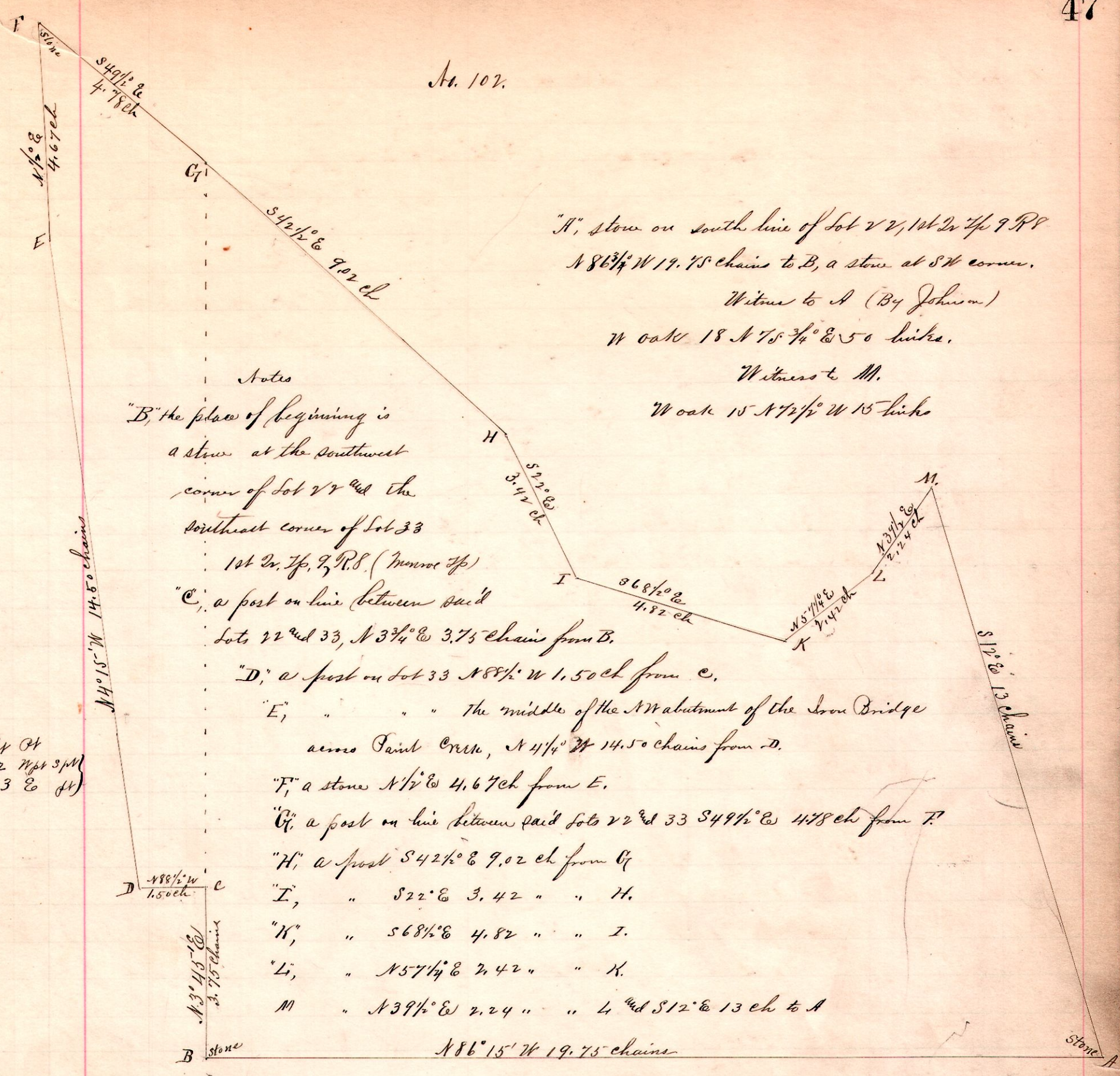


No. 102.



"A", stone on south line of lot 22, 1st Tr. Tp. 9 R. 8
 N 86 1/2° W 19.75 chains to B, a stone at SW corner.

Witness to A (By Johnson)

W oak 18 N 75 3/4° E 50 links.

Witness to M.

W oak 15 N 72 1/2° W 15 links

Notes

"B", the place of beginning is a stone at the southwest corner of lot 22 and the southwest corner of lot 33 1st Tr. Tp. 9, R. 8. (Munroe Tp.)

"C", a post on line between said lots 22 and 33, N 3 3/4° E 3.75 chains from B.

"D", a post on lot 33 N 88 1/2° W 1.50 ch from C.

"E", " " " The middle of the N.W. abutment of the Iron Bridge across Paint Creek, N 41 1/4° W 14.50 chains from D.

"F", a stone N 1/2° E 4.67 ch from E.

"G", a post on line between said lots 22 and 33 S 49 1/2° E 4.78 ch from F.

"H", a post S 42 1/2° E 9.02 ch from G.

"I", " " S 22° E 3.42 " " H.

"K", " " S 68 1/2° E 4.82 " " I.

"L", " " N 57 1/4° E 2.42 " " K.

M " " N 39 1/2° E 2.24 " " L and S 12° E 13 ch to A

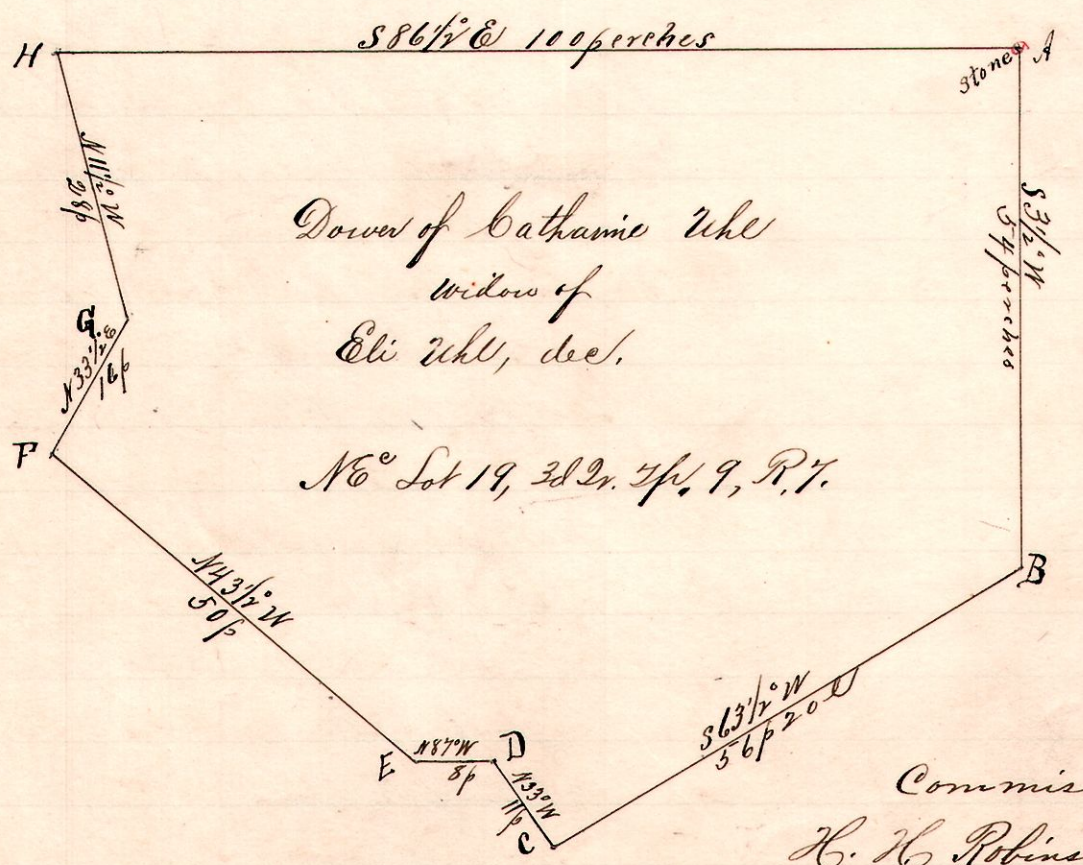
N 86° 15' W 19.75 chains

R 7/4 1/4 1/4 Lot 24
 8 9 1st (33 E 44)

Surveyed for Thomas Miller, James Finney, David Cornell, et al,
 Nov. 27, 1894.

Frank H. Genet, C. Surveyor.

No. 103.



Notes

"A", stone at NE Lot 19, 3d Tr. Tp. 9 R. 7

"B", a post at a side road on East line said lot S 3 1/2° W 54 p from A.

"C", post S 63 1/2° W 56 p 20 c " B.

"D", " " N 33° W 11 perches " C.

"E", a post N 87° W 8 perches " D

"F", " " N 43 1/2° W 50 " " E.

"G", " " N 33 1/2° E 16 " " F

"H", a post on north line of said Lot N 11 1/2° W 28 perches from G and S 86 1/2° E 100 perches to A.

Dower of Catharine Uhl
 widow of
 Eli Uhl, dec.

NE Lot 19, 3d Tr. Tp. 9, R. 7.

Commissioners:

R. H. Robinson
 Thomas Amos
 Frank H. Genet

Dower of Catharine Uhl, set off by order of Common Pleas Court,
 Dec 11, 1894,
 Frank H. Genet, C. Surveyor.

R 7/4 1/4 1/4 Lot
 7 9 3d 19 N 2d