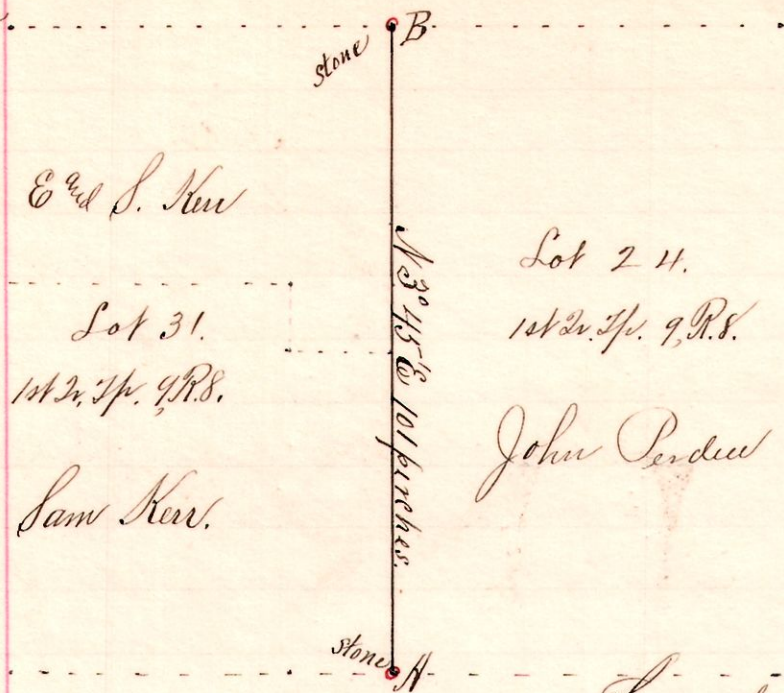


R 1/2 1/2 Lots
8 9 1st 24/31 line

No. 94.



E and S. Kerr
Lot 31.
1st 2d. Sp. 9, R.S.
Sam Kerr.

Lot 21.
1st 2d. Sp. 9, R.S.
John Perdue

Notes
 "A," stone, corner for Lots 24, 25,
 30 and 31. about 2 feet under
 ground in the public road;
 placed a nigger head on top.
 Original Hickory 8 S 3 4 E 24 rod,
 "B," a stone, corner for Lots 23
 24, 31 and 32; 1st 2d Sp 9 R.S.
 Bearing N 3 4 5 E 101 perches
 from A. Original Wash 8
 N 11 W 12, standing

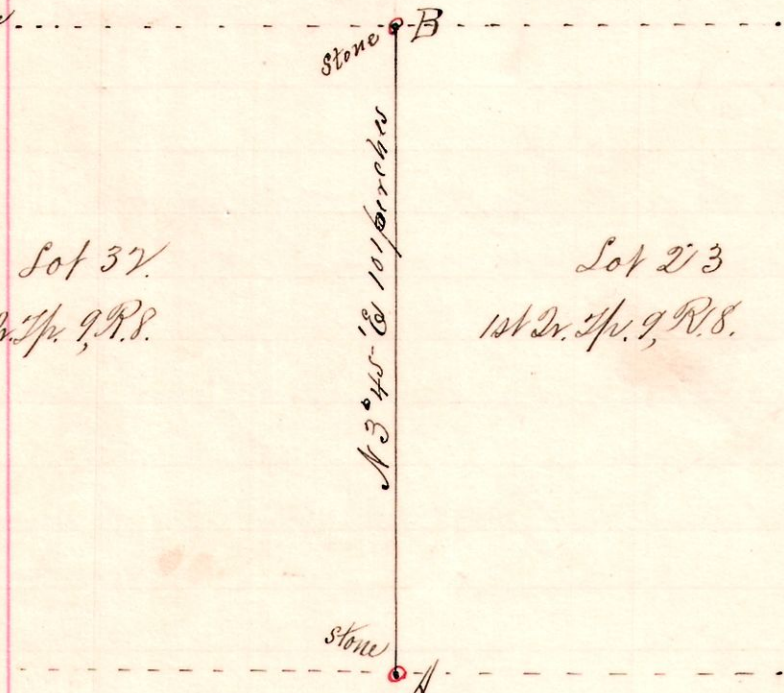
Nov. 15, 1894.

Surveyed for John Perdue, E. Horn, S. & E. Kerr et al

Frank H. Genet, Co. Surveyor.

8 9 1st 23/32 line

No. 95.



Lot 32.
1st 2d. Sp. 9, R.S.

Lot 23
1st 2d. Sp. 9, R.S.

Notes
 "A," stone corner for Lots 23, 24, 31 and 32
 1st 2d. Sp. 9, R.S. Orig. Wash good.
 "B," the corner for Lots 22, 23, 32,
 and 33, we planted a nigger
 head stone about 2 feet long,
 N 3 4 5 E 101 perches from A.

Chainmen:

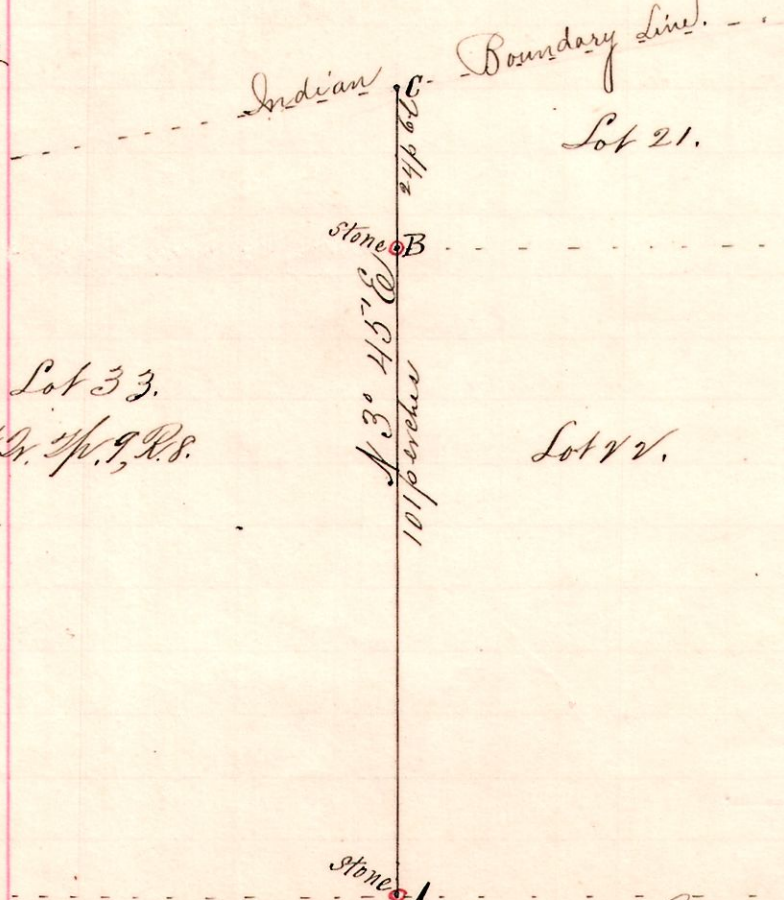
Sanford Klugerman
 Daniel Livingston Isborn
 William Withrow, marker
 Tom Miller, asman.

Surveyed for John Perdue, Eliz. Corn, James Finney, Tom Miller
Nov. 15, 1894.

Frank H. Genet, Co. Surveyor.

8 9 1st 21 22/33

No. 96.



Lot 33.
1st 2d. Sp. 9, R.S.

Lot 21.
1st 2d. Sp. 9, R.S.

Notes
 "A," stone corner Lots 22, 23, 32 and 33,
 1st 2d Sp 9 R.S.
 "B," planted stone in the public road
 corner for Lots 21 and 22 west
 N 3 4 5 E 101 perches from A.
 "C," the northwest corner for
 Lot 21, is N 3 4 5 E 24 p 6 l
 from B, on the old
 Greenville Treaty Line.
 (Indian Boundary).

Nov. 15, 1894.

Surveyed for Tom Miller, A. Cornell, Jas. Finney.

Frank H. Genet, Co. Surveyor.