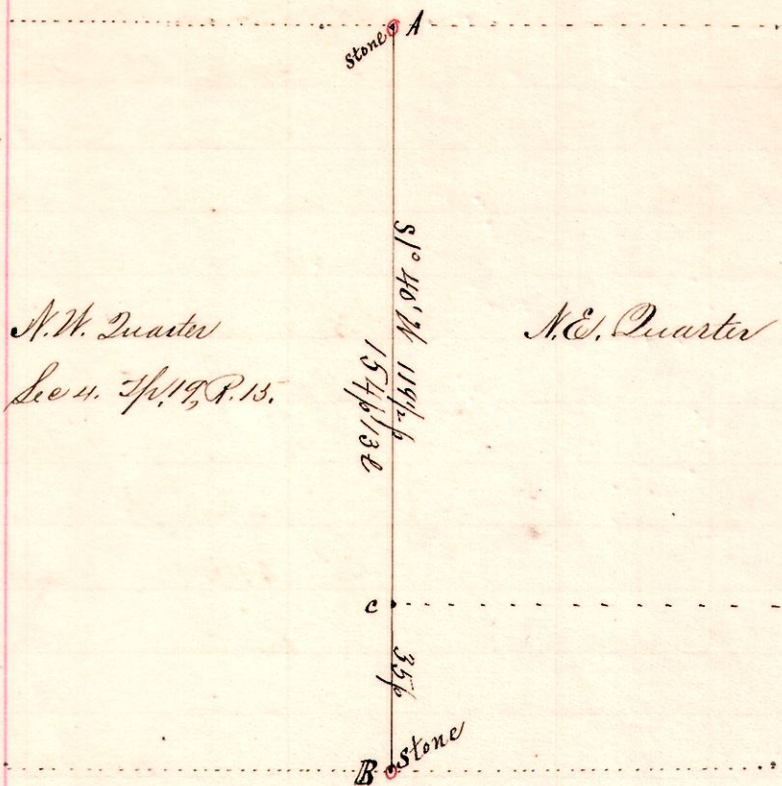


R 4th Sec 2nd
15 19 4 {N.W.} line

No. 92.



N.W. Quarter
Sec 4. T¹⁹ R. 15.

N.E. Quarter

Notes.

"H," a stow at the North Quarter post of Section 4 T¹⁹ R. 15 (Washington T¹⁹) The original White Oak N 57° E 6 c still standing.

"B," the center of said section 4; stone corner; took as a new witness:

R Oak S 84 1/2° E 1 link.

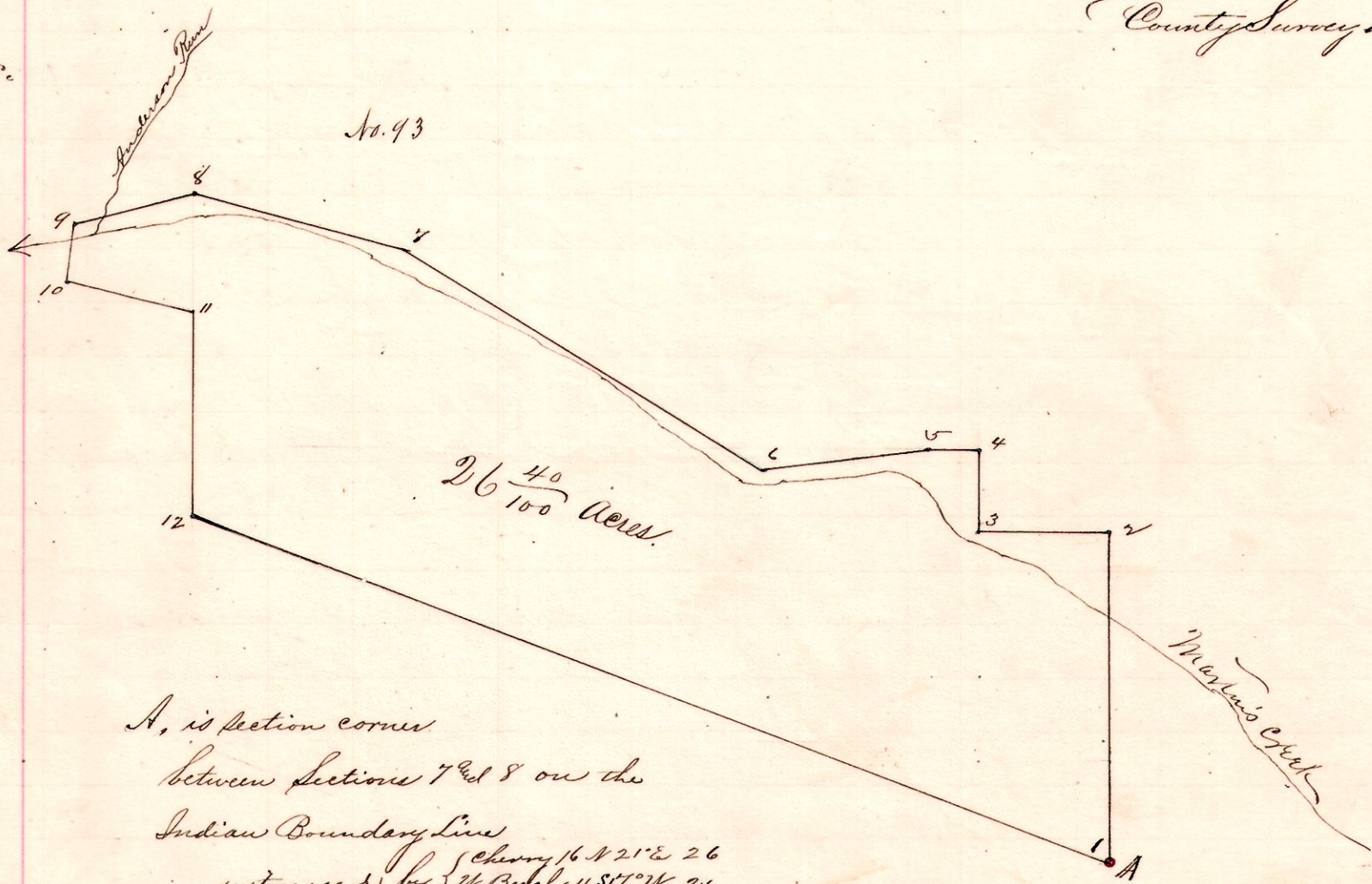
"C" the South west corner of Sec 24 Luning's land in the 1820s is N 40° E 35 perches from B.

Surveyed for Geo. C. Lawell, Geo. W. Luning, Fred. Speng, et al,
Oct. 13, 1844.

Frank H. Gunt,
County Surveyor.

R 4th Sec 2nd
12 14 7 S.E. 8.

No. 93



A, is section corner
between Sections 7th & 8th on the
Indian Boundary Line
witnessed by { Cherry 16 N 21° E 26
W Beech 4 S 17° W 21

Station	Bearing	Distance
1.	N 1 1/2° W	10.00 chains to a post.
2.	S 88 1/2° W	4.00 " " "
3.	N 1 1/2° W	2.50 " " "
4.	S 88 1/2° W	1.50 " " "
5.	S 81 1/2° W	5.00 " " "
6.	N 59 3/4° W	12.75 " " "
7.	N 74° W	6.50 " " "
8.	S 78° W	3.68 " to Line, corner.
9.	S 5° W	1.75 " to a post.
10.	S 76° E	4.00 " " "
11.	S 1 1/2° E	6.13 " " "
12.	S 68° E	29.63 " to the place of beginning, containing 26 40/100 acres.

A plat of a survey of S. Robinson August 20, 1852 of
lands now owned by Sedgwick Cator and Abr. Mast.

Frank H. Gunt, Co. Surveyor.