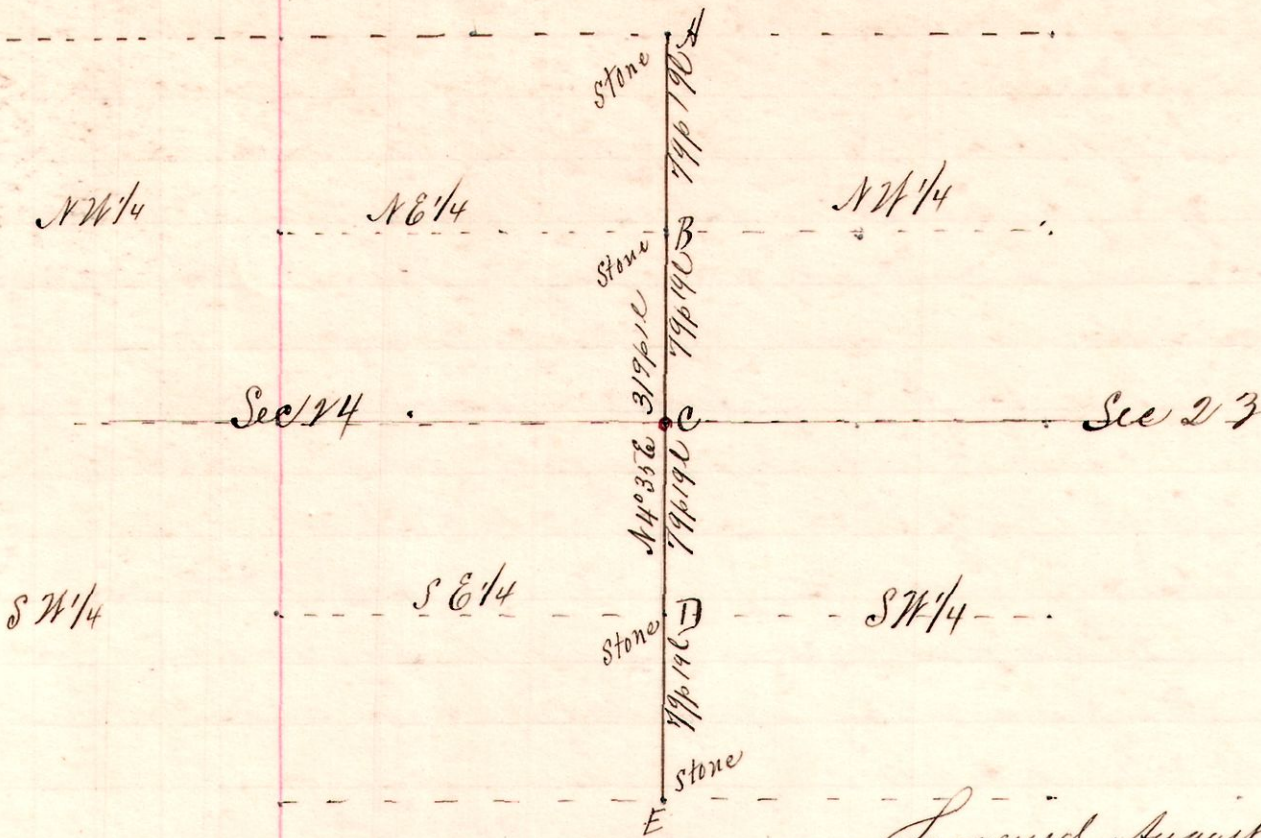


R 7th Sec 23rd SW
 8 8 24th NW & SE

No. 76.

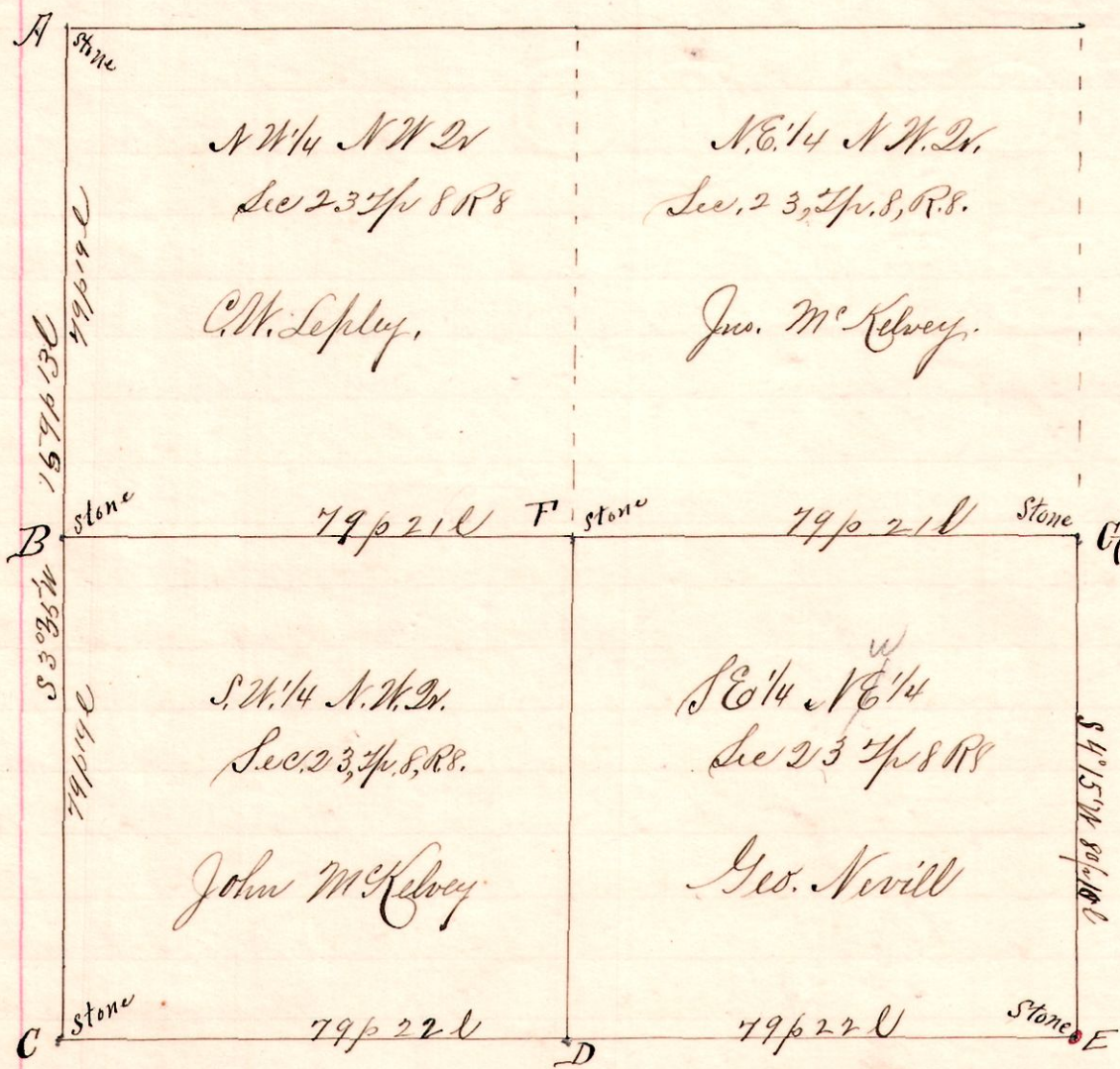


Notes
 The sections corners And E,
 and the half Dr Sec. corners,
 Bnd D, being established
 and marked by stones,
 "C", the Dr corner for the two
 sections 23rd & 24th T^{ps} 8, R. 8,
 witness to C
 White ash 6.840" & 3 lines
 "E," a stone on county-line
 E to A is N435°E 319p 10

Surveyed August 28th 1894 to determine C, The
 Dr corner between Sections 23rd & 24th T^{ps} 8 R. 8, for John McKelvey, et al,
 Frank H. Genet,
 County Surveyor.

No. 77.

8 8 23 NE



Notes
 "E," stone at the SWth
 NW 1/4 Sec. 23, T^{ps} 8, R. 8,
 took as a new witness
 took 16.470" & 6 1/2"
 thence N86 3/4° W to C
 a stone at SWth said
 Dr, and established
 a stone corner at
 D, the half Dr post
 then commencing at B
 ran the line BFC
 Fnd & G stones found
 buried; placed new
 stones on top of old.
 From G to E is S4 1/4° W
 80 p 10
 Bearing of line BFC
 is S86° 45' E 157 p 170

Surveyed for John McKelvey Geo Nevill CW Sepley, et al
 to determine the corners and the lines bounding and sub-dividing
 said Northwest Quarter of Section 23 T^{ps} 8 R. 8
 August 29, 1894.

Frank H. Genet,
 County Surveyor.