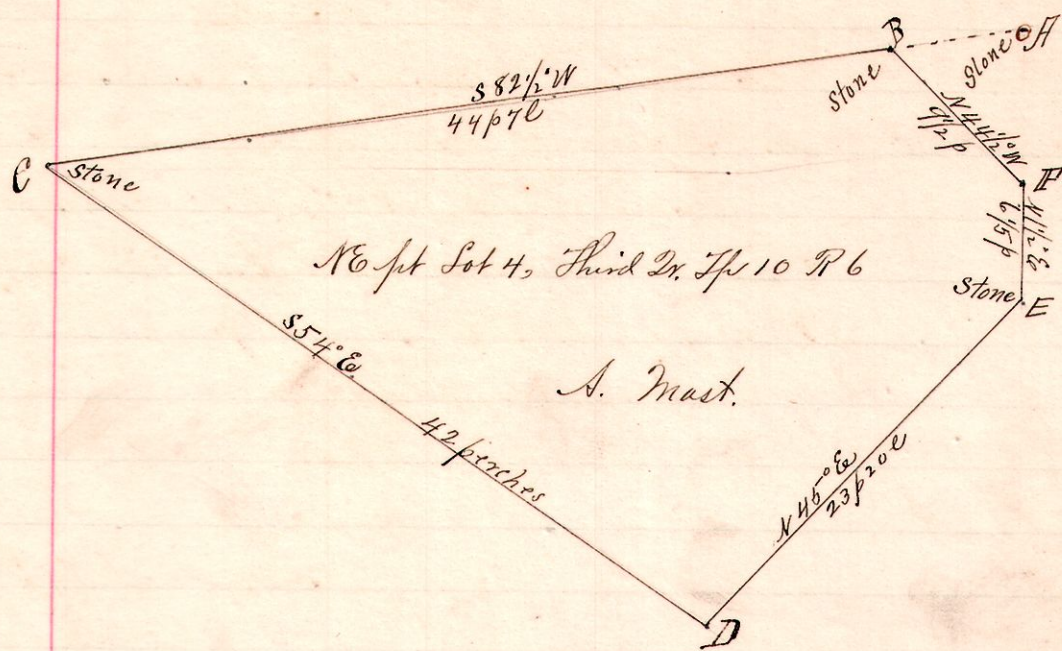


R. 14th Lot
6 10 3rd 4 N6th

No 45-



Notes.

"A," a stone at the north east corner of Lot 4, 3d 2d Tp, 10, R. 6.

"B," a stone in the public road on the North line said Lot 4 and on the Indian Boundary Line

S 82 1/2 W 7 p 30 from A.

The place of beginning

"C," a stone on said line, at the southwest corner of the

Southwest Quarter Sec 8 Tp 10 R 12

S 82 1/2 W 44 p 70 from B.

"D," a post S 54 E 42 perches from C

"E," a stone on east line S 45 E 23 p 20 from D.

"F," a post in road N 1/2 E 6 1/5 perches from E

and N 44 1/2 W 9 1/2 perches to B.

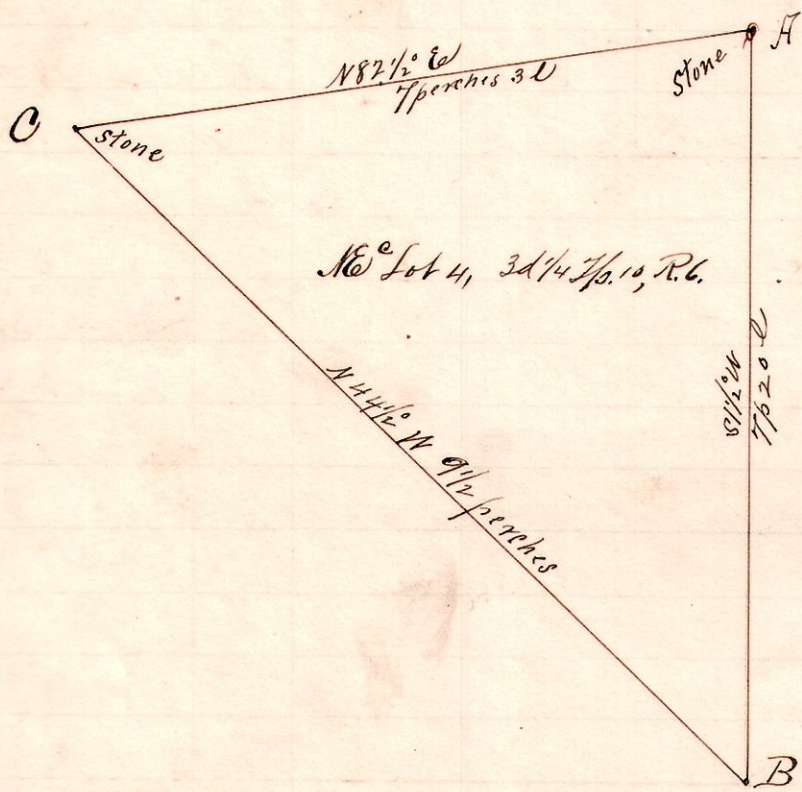
Surveyed for A. Mast, S. Castor, and others, April 7, 1894

Frank H. Genet

County Surveyor

No. 46.

6 10 3rd 4 N6th



Notes.

"A," stone at the northeast corner of Lot 4 3rd 2d Tp 10 R 6 (on Ind. Boundary)

"B," a post on the east line said Lot 4 S 1 1/2 W 7 p 20 from A.

"C," a stone in the public road, on the Indian Boundary line and the north line said Lot 4,

N 44 1/2 W 9 1/2 perches from B

and N 82 1/2 E 7 p 30 to A.

Chaimmen:

Joseph Fry
Fred Schnell.

Surveyed for Abraham Mast, Sedgwick Castor, and others, April 7, 1894.

Frank H. Genet,
County Surveyor
Holmes Co.,
O.