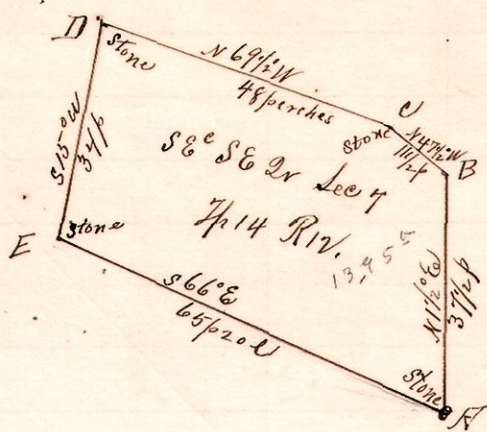


R 7p Sec 2, Q1  
1214 7 SE SE

No. 42.



Notes.

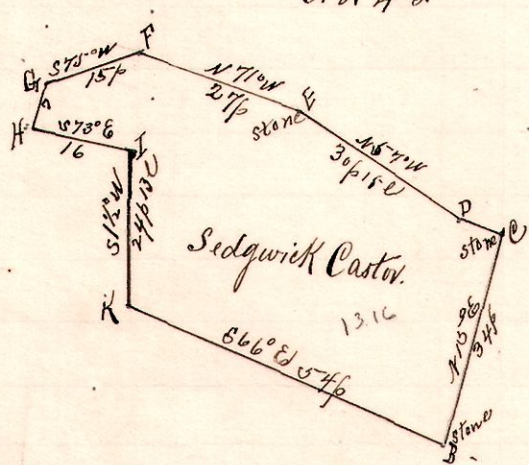
"A," stone at the southeast corner of the southeast quarter of Sec 7 7p 14 Riv on old Indian Boundary Line  
 "B," a post on the east line of said quarter N 47 1/2 E 37 1/2 perches from A, on south bank of creek.  
 "C," a stone N 47 1/2 W 11 p from B.  
 "D," a stone N 69 1/2 W 48 perches " C  
 "E," a stone S 15 W 34 p from D, and S 66 E 65 p 20 U to A

Surveyed for A. J. Mast, Sedgwick Caster and others,  
April 6, 1894.

Frank H. Genet,  
County Surveyor.

1214 7 SE SE

No. 43.



Notes

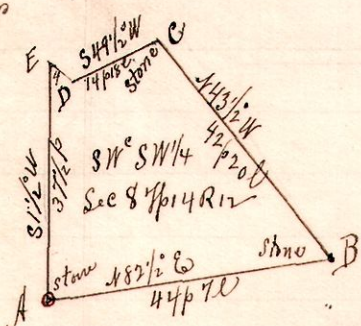
"B," a stone N 66 W 65 p 20 U from A, stone at the S 8 E SE 14 sec. 7, 7p. 14, Riv.  
 "C," a stone N 15 E 34 p from B.  
 "D," a post N 69 1/2 W 7 p " C.  
 "E," a stone, N 57 W 30 p 15 U from D.  
 "F," a post N 71 W 27 perches " E  
 "G," a post S 75 W 15 perches " F  
 "H," a stone on south bank of Martins Creek S 8 W 7 perches from G.  
 "I," a post S 73 E 16 perches " H.  
 "K," a stone S 1 1/2 W 24 p 13 U from I and S 66 E 54 perches to B.

Surveyed for Sedgwick Caster, A. J. Mast, Geo. Schnell et al  
April 6, 1894.

Frank H. Genet,  
County Surveyor.

No. 44.

1214 8 SW SW



Notes.

"A," a stone on old Indian Boundary Line at the SW corner Southwest Quarter Sec. 8, 7p. 14, R. 12.  
 "B," a stone on said line, in the public road N 82 1/2 E 44 p 7 U from A.  
 "C," a stone in said road N 43 1/2 W 42 p 20 U from B.  
 "D," a stone on bank of creek S 49 1/2 W 14 p 8 U " C  
 "E," a post on west line N 47 1/2 W 4 p from D and S 1 1/2 W 37 p to A.

Surveyed for A. Mast, M. L. and Sedgwick Caster et al  
April 7, 1894.

Frank H. Genet,  
County Surveyor.