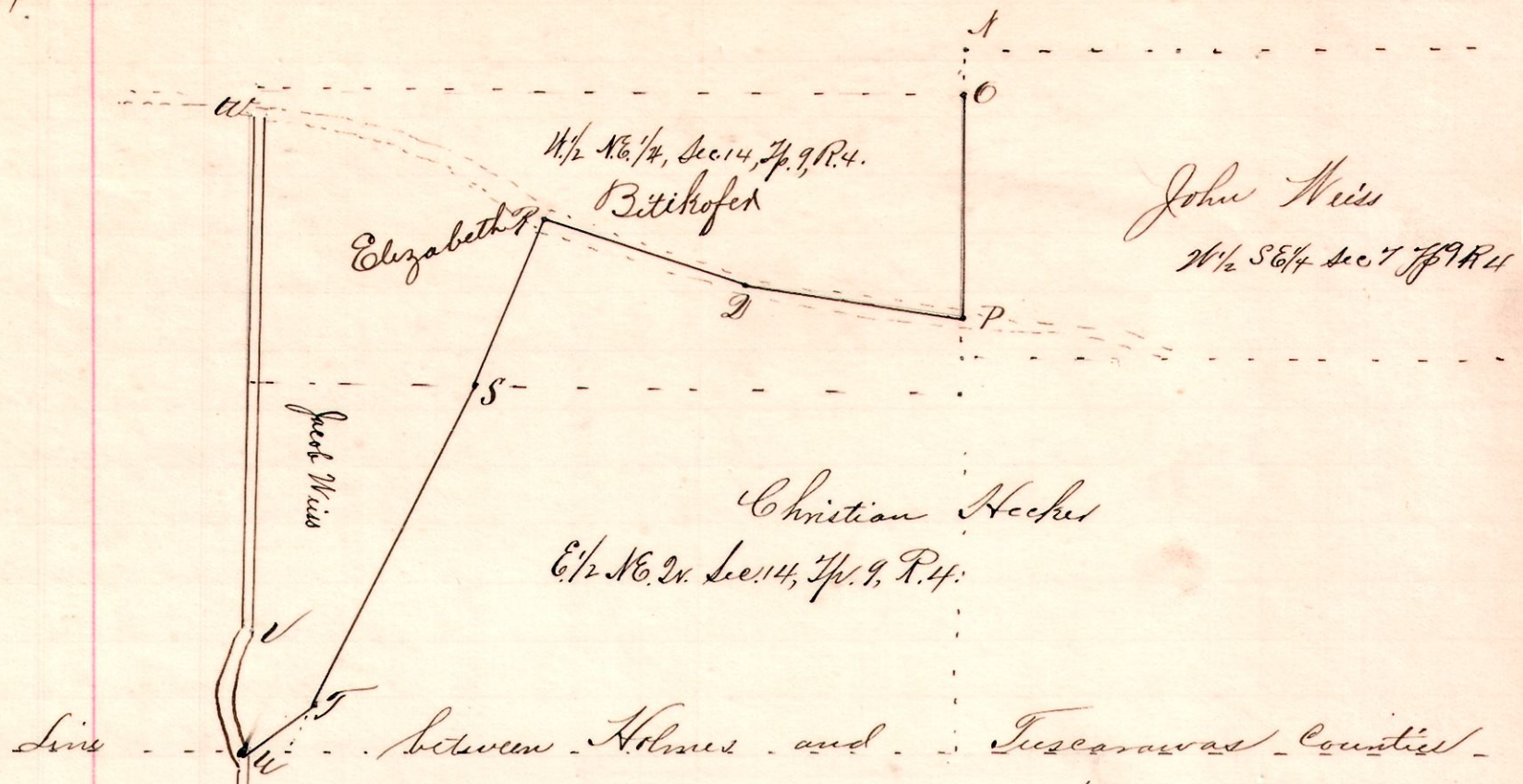


R 1st Sec.
4 9 7th 14.

No. 39.

C R 172



- Notes.
- "O" stone at the northeast corner of the Northwest Quarter of Sec. 14 Tp. 9, R. 4, S 86 1/2° E 13 p 3 l from A.
 - "P," a stone in the public road on the line between the lands of John Weiss, the W 1/2 of the southeast Quarter of Sec. 7, Tp. 9, R. 4 and the lands of Elizabeth Bitikhofer, the W 1/2 NE 1/4 Sec. 14, Tp. 9, R. 4. S 86 1/2° E 43 perches 3 links from O.
 - "D," a stone in said road, on lands of said Elizabeth Bitikhofer, S 11 1/2° W. 49 perches from P.
 - "R," a post in said Road, on said lands, S 21 1/4° W 49 p from D.
 - "S," a stone on the line between the lands of Elizabeth Bitikhofer the W 1/2 NE 1/4 Sec. 14, Tp. 9, R. 4 and the lands of Christian Hecker, the E 1/2 said Sec. S 63 1/4° E 40 1/2 perches from R.
 - "F," a post on the line between the lands of Christian Hecker and Jacob Weiss S 59° E 80 perches from S.
 - "W," a stone on the line between Holmes and Tuscarawas Counties at the southeast corner of the Northwest Quarter of Section 14 Tp. 9, R. 4, S 34° E from F. 16 perches 15 links.
- The part of old road from W to W to be vacated.

Chainmen:
 Oliver Garner
 Noah Miller
 Geo. J. Genet, marker

Viewers:
 Joseph Butler.
 W. H. Boyd.
 Abraham Orushel.

I hereby certify the foregoing to be a correct plot and description of the County Road petitioned for by Mrs. Bitikhofer, et al. as viewed and surveyed March 15th and 16th, 1894.

Frank H. Genet,
 County Surveyor,
 Holmes Co. O.