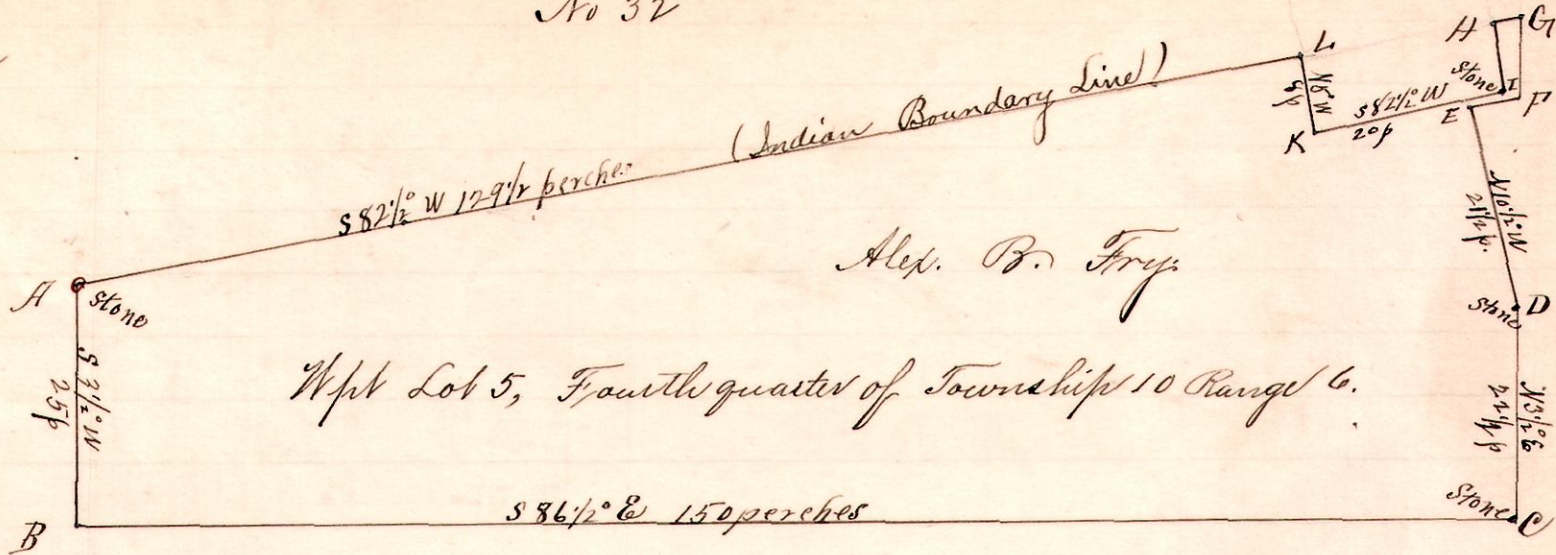


R 1/2 Dr cot
6 10 4 5 A p t

No 32



Alex. B. Fry

Wpt Lot 5, Fourth quarter of Township 10 Range 6.

Notes

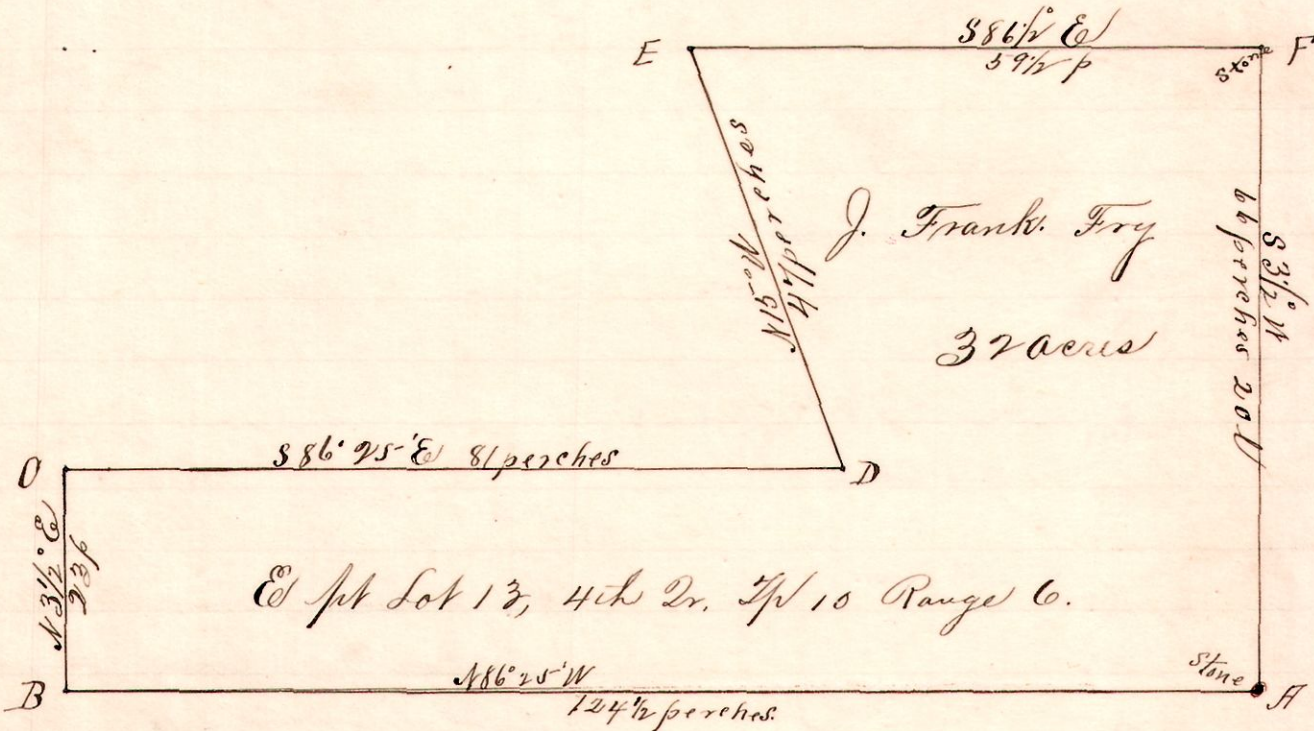
- "A" a stone on the Indian Boundary Line at the NW corner Lot 5, 4th Dr Tp. 10, R. 6.
- "B" a post at the southwest corner of said Lot 5.
- "C" a stone on the south line of said Lot 5, S 86 1/2° E 150 perches from B.
- "D" a stone at southwest corner School lot, N 10 1/2° E 2 1/2 p. from C.
- "E" the northwest corner of said School lot, N 10 1/2° W 2 1/2 p. " D.
- "F" a post on north line said school lot, N 84 1/2° E 5 p 9 l. " E.
- "G" a post on Ind. Boundary Line, at NE School lot N 3 1/2° E 8 p 10 l from F.
- "H" " " " " on East line grave yard S 82 1/2° W 3 p " G.
- "I" a stone at the southeast corner of grave yard S 5° E 5 perches " H.
- "K" the southwest corner of said grave yard S 82 1/2° W 20 perches " I.
- "L" a post on west line of said grave yard, and on the old Indian Boundary line N 5° W 8 p from K and S 82 1/2° W 129 1/2 perches to A.

Surveyed for Alex. B. Fry and other Heirs of Ges. Fry, dec.,
March 14, 1894.

Frank H. Genet,
County Surveyor.

No 33

6 10 4 13 E p t.



J. Frank. Fry

37 acres

E 1/4 Lot 13, 4th Dr. Tp 10 Range 6.

Notes.

- "A" a stone at the southeast corner Lot 13, 4th Dr Tp 10 R. 6.
- "B" a post on south line said Lot 13, N 86° 25' W 124 1/2 p from A.
- "C" a post N 3 1/2° E 23 p from B.
- "D" a post S 86° 25' E 81 p " C.
- "E" a post on North line said Lot 13, N 15° W 47 p from D.
- "F" a stone at the northeast corner of said lot, S 86 1/2° E 59 1/2 p from E and S 3 1/2° W 66 p 20 l to A.

Surveyed for Jacob F. Fry, Charles Fry A.C. Fry et al
March 14, 1894.

Frank H. Genet,
County Surveyor.