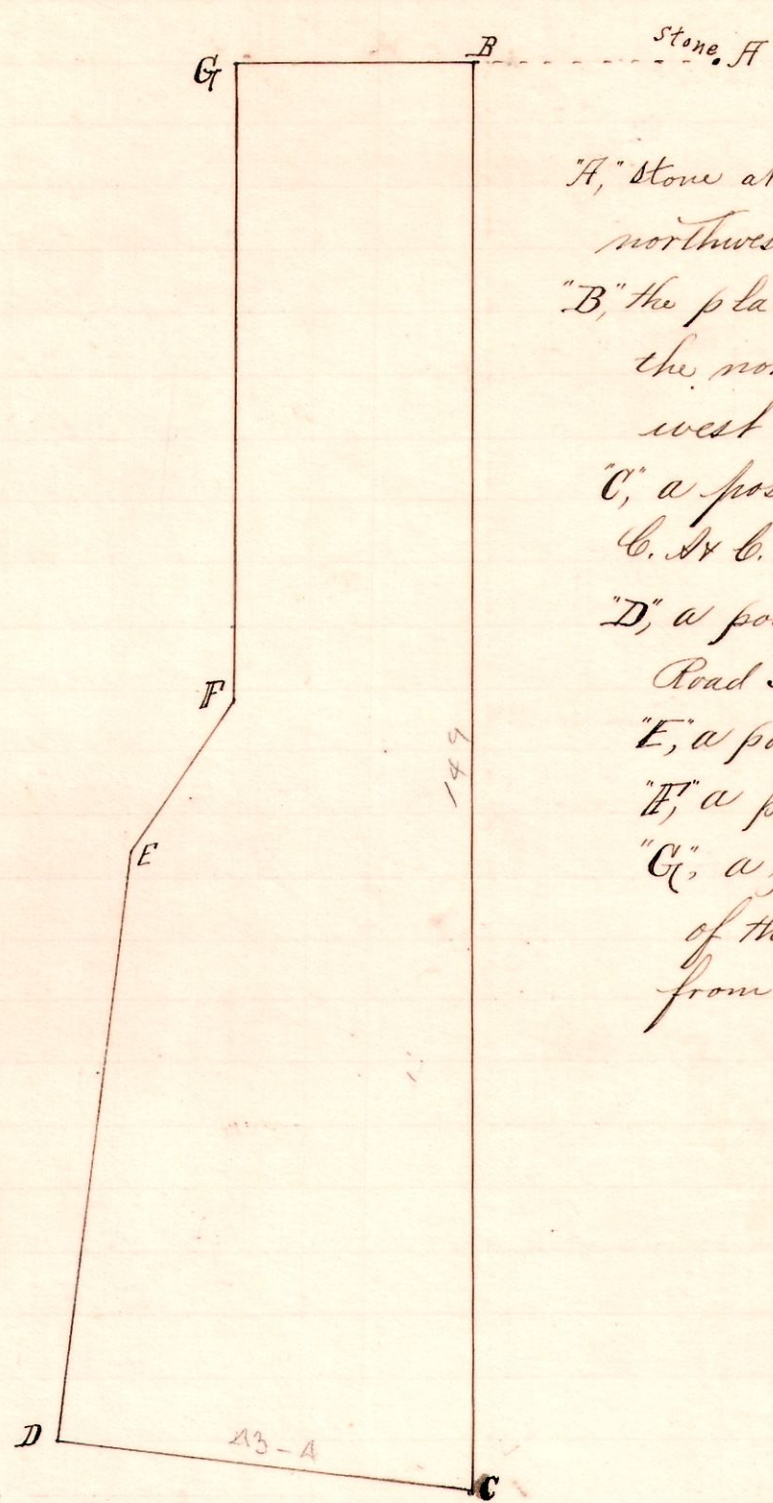


R Tp Sec 2^d Pt.
8 5 10 M E

No. 5.



Notes.

"A," stone at the northeast corner of the northwest quarter of Sec. 10, T^p. 8, R. 8.

"B," the place of beginning is a post on the north line of said quarter 25 perches west of A.

"C," a post on the north line of the C. & G. R.R. S 3 1/2 W. 149 p. from B.

"D," a post on north line of said Rail Road N 82 W 43 p 4 l from C.

"E," a post N 9 3/4 E 64 p from D.

"F," a post N 3 1/4 E 18 p. from E

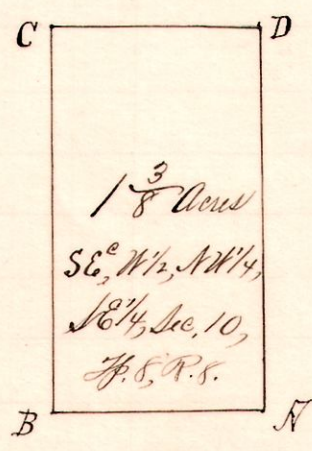
"G," a post on the north line of the quarter N 3 1/2 E 66 perches from F, and 25 p. west of B.

Surveyed the above for Otto Shrimplin et al, June 29 and August 24, 1893.

Frank H. Genet,
County Surveyor.

R Tp Sec 2^d Pt.
8 8 10 SE NW 1/4 Sec

No. 6.



Notes.

"A," is a post at the southeast corner of the west half of the Northwest quarter of the Southeast Quarter of Section 10 T^p 8 R. 8.

"B," a post on the south line of said quarter Quarter N 86 1/2 W 11 p from A.

"C," a post N 3 1/2 E 20 p from B.

"D," a post on the east line and in the public road 11 p east of C, & 20 p north of A.

The above tract as sold by Oliver Shrimplin to Adeline Richards and Surveyed August 24 1893.

Frank H. Genet,
County Surveyor.