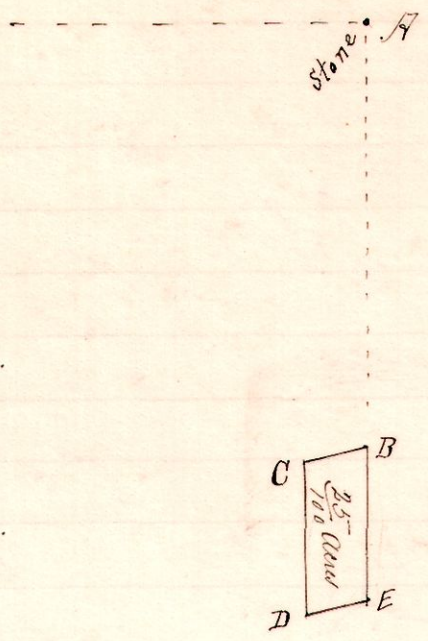


T<sub>10</sub> T<sub>10</sub> Sec 10 N<sub>10</sub> E<sub>10</sub>  
8 8 10 N<sub>10</sub> E<sub>10</sub>

No. 1.



Notes.

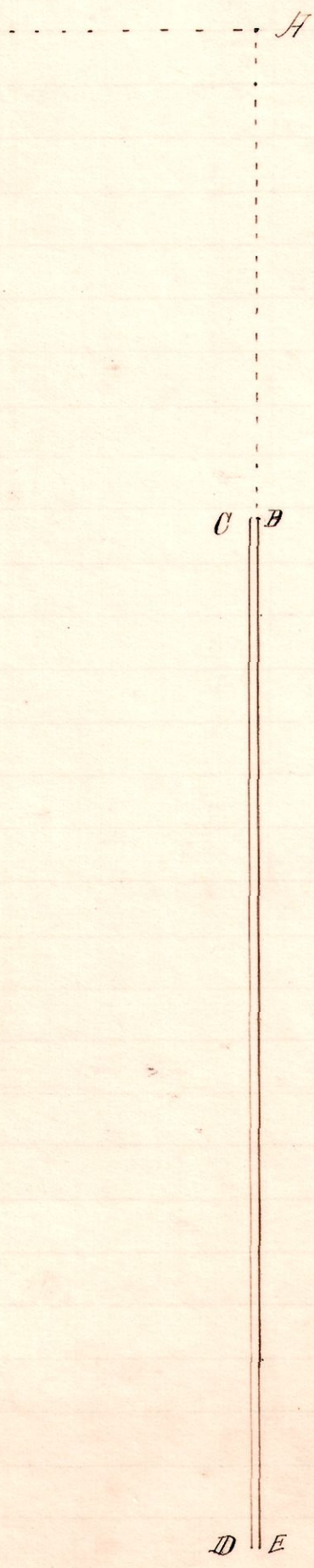
"H," is a stone at the northeast corner of the Northwest Quarter of Section 10, T<sub>10</sub> S, R. 8.  
 "B," a post on the east line of said Quarter, the place of beginning, S 3 1/2° W 6.60 chains.  
 "C," is a post S 77° W 1.04 ch. from B.  
 "D," a post, S 3 1/2° W 2.41 ch. from "C"  
 "E," is a post on the east line of said Quarter, S 3 1/2° W 2.41 ch. from B and N 77° E 1.04 ch. from D.

A Survey of the Shrimplin Cemetery at the request of Otto, Oliver and Simon Shrimplin, June 29, 1893.

Frank H. Genet,  
 County Surveyor.

No. 2.

8 8 10 N<sub>10</sub> E<sub>10</sub>



Notes

"H," is a stone at the northeast corner of the Northwest Quarter of Section 10, T<sub>10</sub> S, R. 8.  
 "B," the place of beginning is a post on the east line of said Quarter S 3 1/2° W 9.01 chains from A.  
 "C," a post 13 chains west of B.  
 "D," a post S 3 1/2° W 19 chains from C.  
 "E," a post on the east line of said quarter S 3 1/2° W 19 chains from B, and 13 links east from D.

The above are notes of a private road leading to the Shrimplin Cemetery as surveyed for, Oliver, Otto & Simon Shrimplin June 29, 1893.

Frank H. Genet,  
 County Surveyor,  
 Adams Co., O.