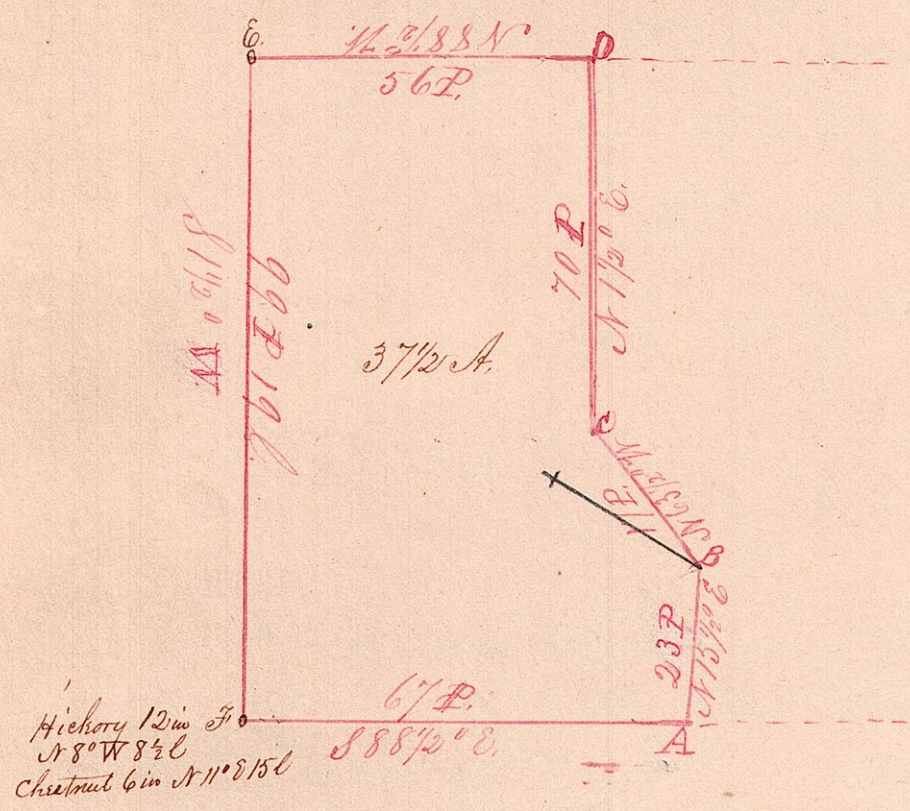


West part Lot No 16, 1st Tr. S. 9, R. 9.



The above described land was surveyed for Jesse A. Morris Aug 18th 1866. Being the West part of Lot 16, in the 1st Quarter Township 9, Range 9, and placing corner stones at A, B, C, D & E. at F. there being one already, the Chain carriers were Robert Bevington & Abraham Cline, Marker Daniel Cline, Persons present and Cornelius Koyser,

- Corner Stone at A, 4 in Diameter
- " " " B 6 in "
- " " " C 6 in "
- Sycamore at C 16, S 79° W 15 L
- Stone at D 4 in Diameter
- Red at D 4 in S 25° W 3 1/2 L.

J. S. Orr County Surveyor