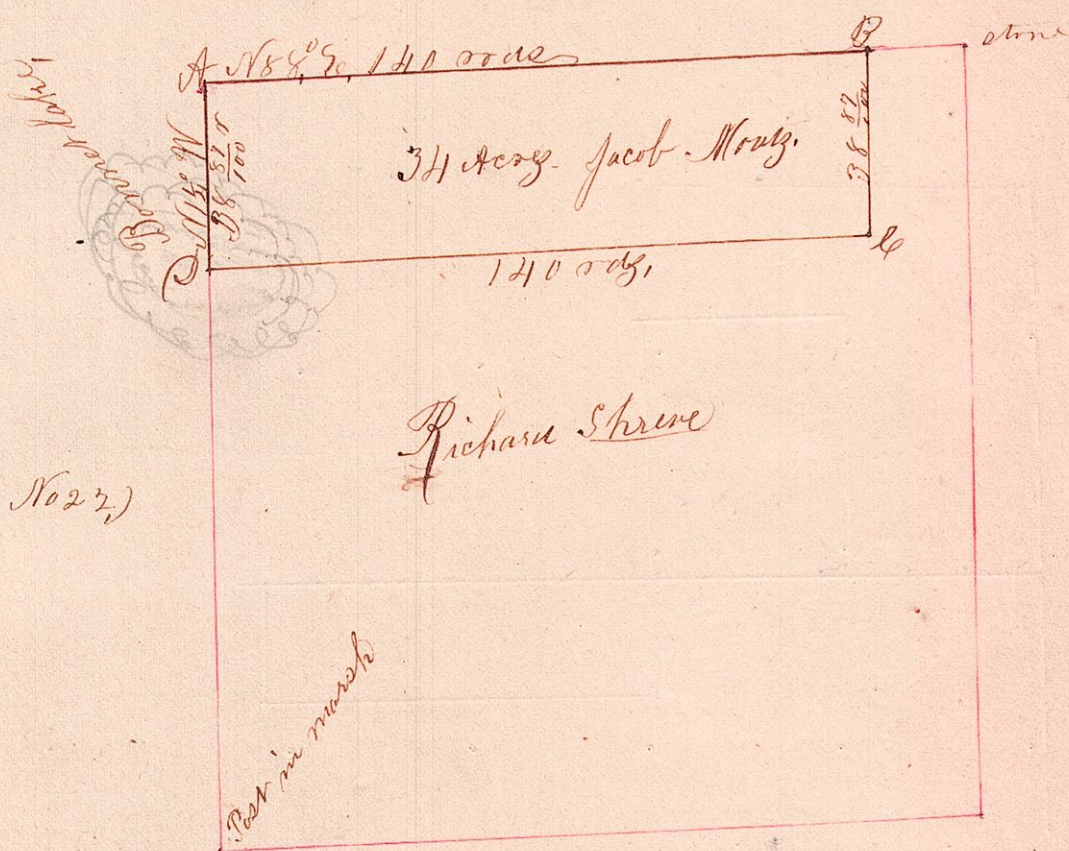


(M)



A-stone placed = B-stone = C-stone
Pin Bonnet Lake

Surveyed the above for Richard Shreve and
Jacob Moritz, on the 2^d day of Jan, AD 1861, being
thirty four acres out of North west corner of the
North east qt. of the above named section, of
which I certify the above to be a correct plat
Joseph Edgar, County
surveyor for Holmes Co.