

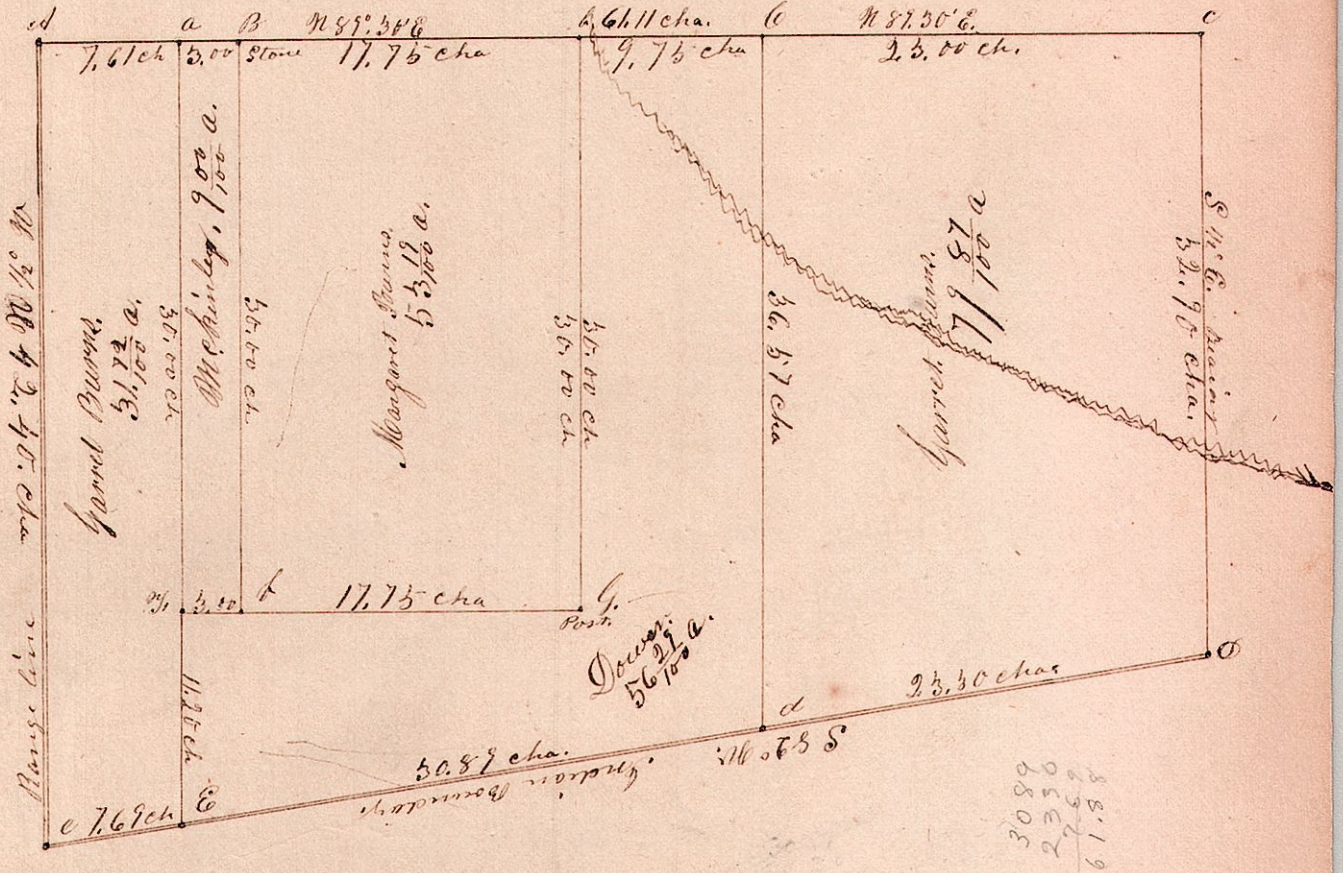
615.

169

Township 15 Range 13

The South West Quarter of Section 18 of township 15, and Range 13, Congress.

Morris Estate.



Surveyed the above on the 19th and 20th of December 1856, Being the South West Quarter of Section 18 township 15 and Range 13, which was partitioned by the consent of the parties concerned.

Bearing trees.

- C. Hickory 12 N 77° W 32 S Wild Cherry 5 S 77° E 28
- f. Hickory 14 N 44° E 13 1/2 S Iron Wood 6 N 66° W 12 1/2
- g. Maple 15 N 26° W 16 1/2
- h. Hickory 16 N 83° E 34 S Hickory 7 S 51° W 9 1/2
- l. W Oak 10 N 74° E 20 S W Oak 12 S 56° W 11 1/2
- e. W Oak 12 N 124° W 21 S W Oak 4 S 60° W 15
- a. Hickory 12 N 65° W 12 1/2 D Log 24 N 44° W 42 Links

A. J. Everts, C. S. 26th.