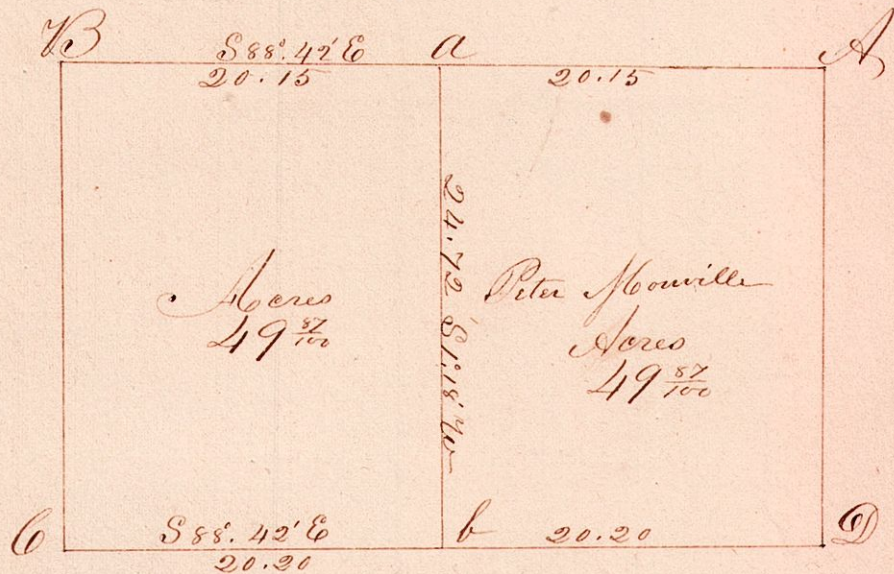


(Military)

Sect. No. 8 Twp 10 Range 4 3^d of Sp



Bearing Trees

A	W. Walnut 13	Corner
B	W. Oak 8 N 26 1/2 E 27	Original decaying
	Poplar 14 S 30 E 23	
V	R. Oak 22 N 53 W 35	limbs
	Ironwood, one of the original	
a	W. Oak 20 S 11 W 20	limbs
	do 15 S 79 E 49	"
b	W. Oak 28 N 37 E 44	limbs
	do 20 N 41 W 38	"

Surveyed the above for Peter Howille of
Winesburg
Feb 6th 1851

Jackson Silcott C. S. T. 6.6