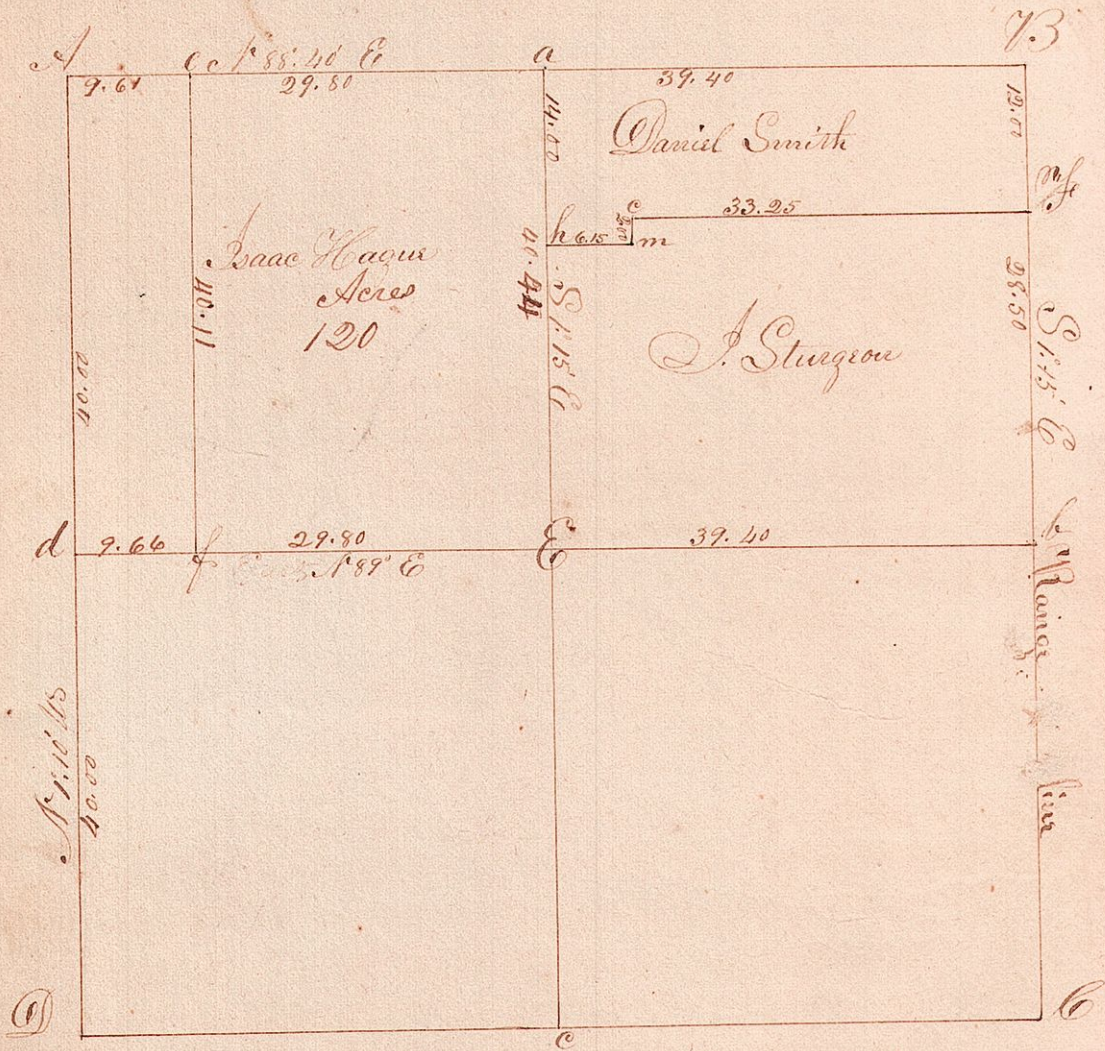


Downship 18 Range 11 Section 36 (Ripley)



Bearing Trees

- A. W. Oak 24 S 87° W 74 S W. Ash 10 S 88 E 39.
- B. Stone taken on range line
- C. R. Oak 10 S 59 W 37 1/2
- D. Elm 20 S 51 E 27 S Hickory 4 S 47 W 40
- E. W. Oak 36 S 48 W 48 S Hickory 9 S 16 W 46
- a. W. Oak 20 N 65 W 36
- b. W. Alnus 16 S 5 W 74 S W. Ash 9 S 29 E 39
- c. Original W. Oak standing
- d. Wick 15 S 66 E 31 S W. Oak 23 S 49 E 59
- e. W. Oak 13 N 49 E 25 S So 8 N 74 W 52
- f. W. Oak 13 West 14 S W. Oak 20 N 85 E 39
- g. W. Oak 23 S 21 W 32
- h. W. Oak 16 S 58 E 27 S W. Oak 18 S 23 E 36

Surveyed June 1849

Jackson Gilcott (S 16 E)