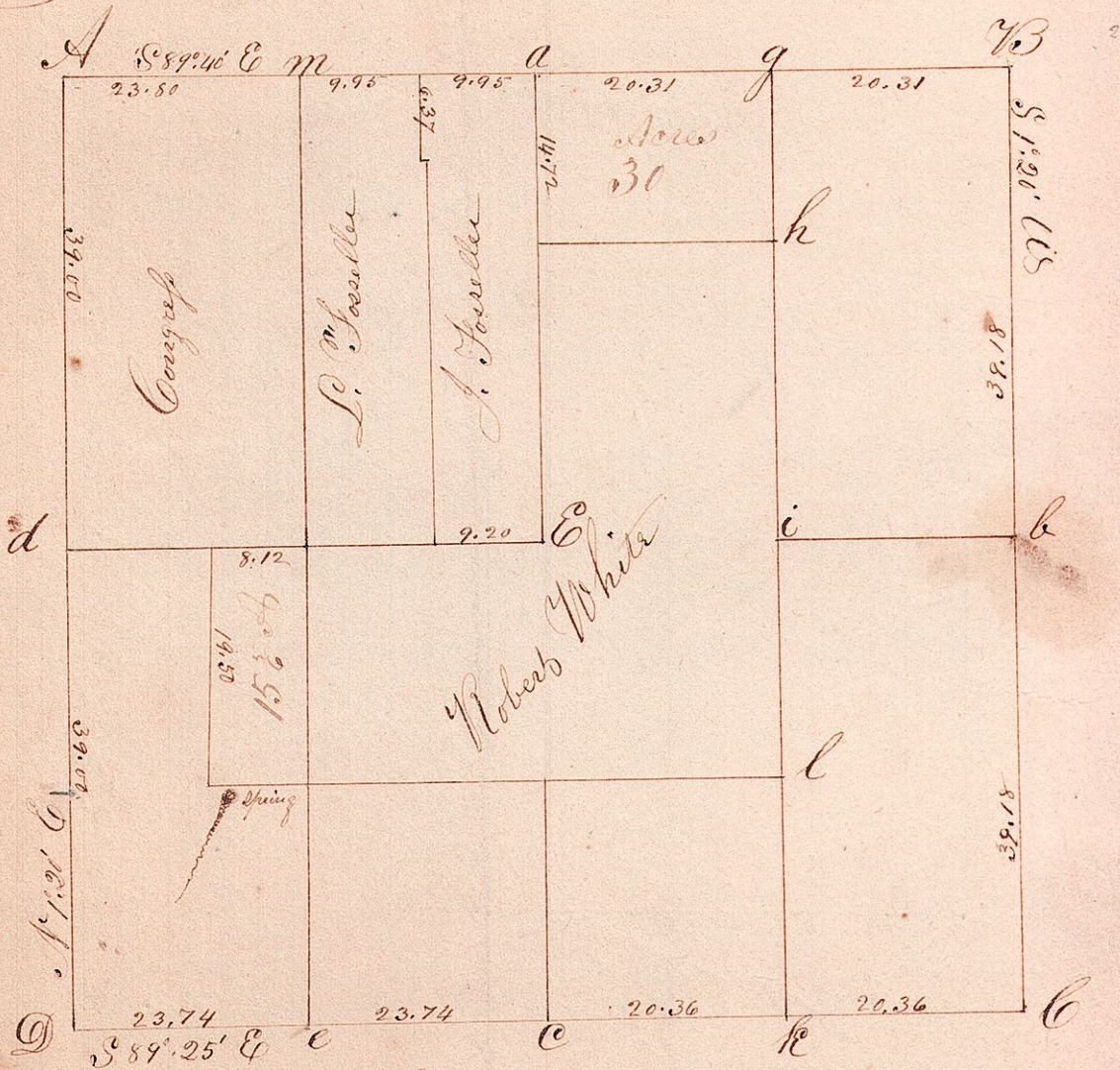


Township 8 Range 9 Section 13 (Richland)



Remarks

The above section was surveyed March 1847 for Samuel Burden &c
 Of Original Corners. At A stump standing ab. a. good. at B, gone nothing found the corner established by the line running N. S. S. and the line from A to a. striking S. S. line -
 At C, one of the Original standing -
 At c, the Original W. Oak down and nearly gone as present -
 At C. One of the Original standing and the stump of the other standing, they do not exactly agree with the field notes, though the old line from the East leads here