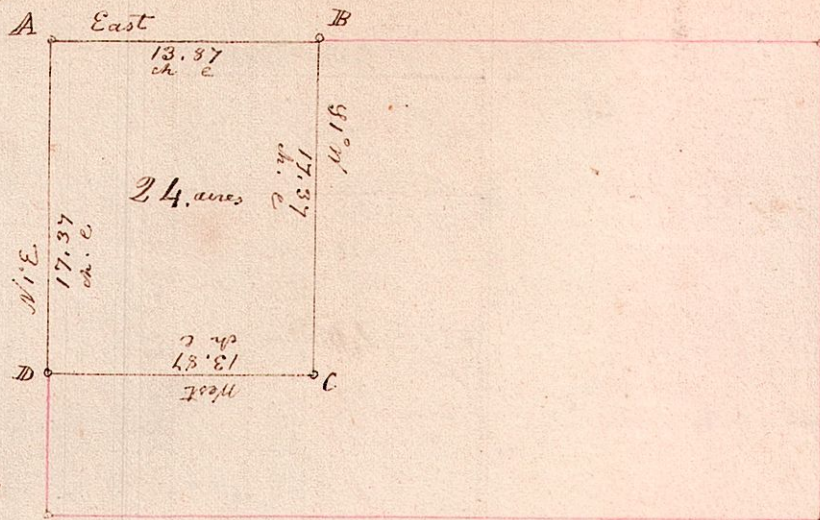


6

N. W. part of Lot 7. in T. 10, of R 7, Section 4.

No
6

Station	Nearest Trees	Distance	Course	Length
A	Beech	20	N 56 E	13
	Do	20	S 40 E	23
B	Sugar	18	S 57 E	10
	Elm	8	N 33 W	18
C	Beech	15	N 10 E	20
	Ash	6	S 85 W	4
D	Stone	12	corner	

Surveyed the above February 22^d AD 1830.

Being the north West part of Lot number 7. in T 10 of R 7 Section 4, which was sold to Cassel Hites, on the 31st day of December AD 1827, at the Auditors sale in the County of Holmes Ohio, for the taxes &c. due thereon for the years 1825 & 26, of which the above is a correct plat and notes of the same.

Samuel Robinson Co Surveyor