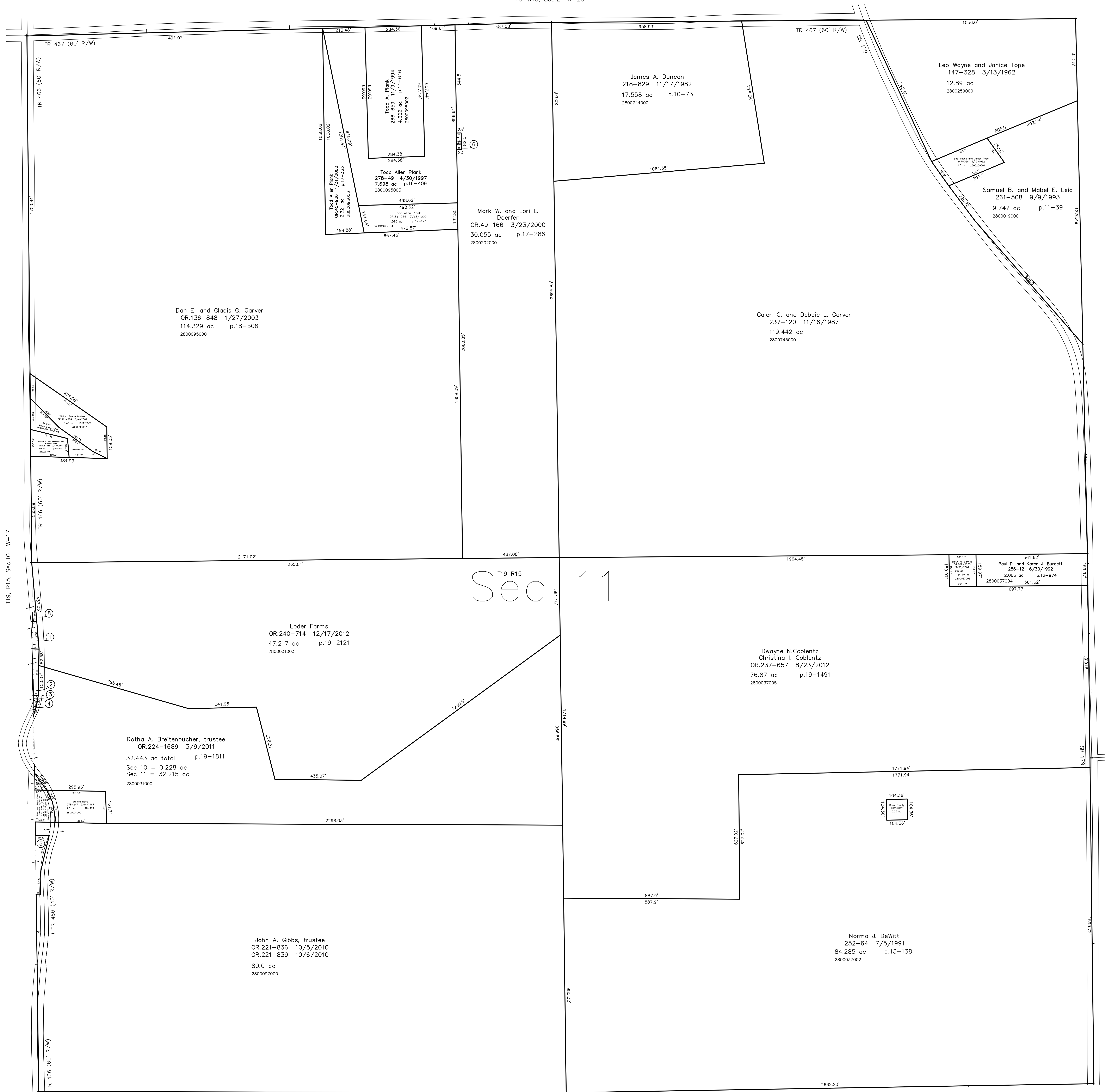


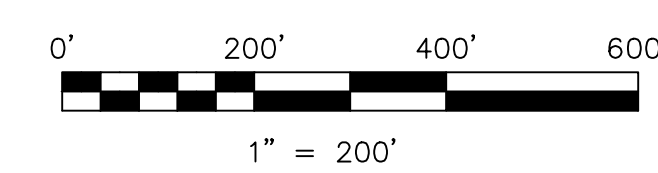
- 2800030006 ① Robin Marie Breitenbucher  
OR.20-449 11/17/1998  
0.084 ac p.16-904
- 2800031001 ② William Breitenbucher  
235-699 6/29/1987  
0.148 ac p.10-766
- 2800030002 ③ George W. Hoover and Kelley M. Snyder  
OR.19-43 10/28/1998  
OR.64-786 12/27/2000  
0.025 ac p.16-896
- 2800030005 ④ Vincent P. Smith  
OR.223-2129 1/21/2011  
0.006 ac p.16-896
- 2800113000 ⑤ Clyde W. Kaufman, general partner  
OR.100-367 1/16/2002  
0.26 ac p.7-783
- 2800095005 ⑥ Todd Allen Plank  
OR.37-862 8/30/1999  
0.044 ac p.17-224
- 2800030004 ⑦ David W. Rose  
OR.19-508 11/2/1998  
0.058 ac p.16-904
- 2800030001 ⑧ Diane J. Glenn  
OR.222-3263 12/20/2010  
0.072 ac p.16-747



Last Revision: 12/17/2012

**T-19, R-15, Sec. 11  
Washington Twp.  
Holmes County, Ohio**

# W-22



LET IT BE KNOWN, THIS MAP HAS BEEN PREPARED AS A REFERENCE GUIDE TO PROPERTY OWNERSHIP. WE BELIEVE THIS INFORMATION TO BE CORRECT AND CURRENT, HOWEVER IT IS NOT INTENDED FOR ANY LEGAL USE, WHETHER IT BE IN SALES, TRANSFERS, TRADES, LEASES OF ANY TYPE, ETC., AND DO NOT ACCEPT RESPONSIBILITY FOR ERRORS OF ANY NATURE OR OMISSIONS CONTAINED HEREIN.

⊙ new survey required for next transfer