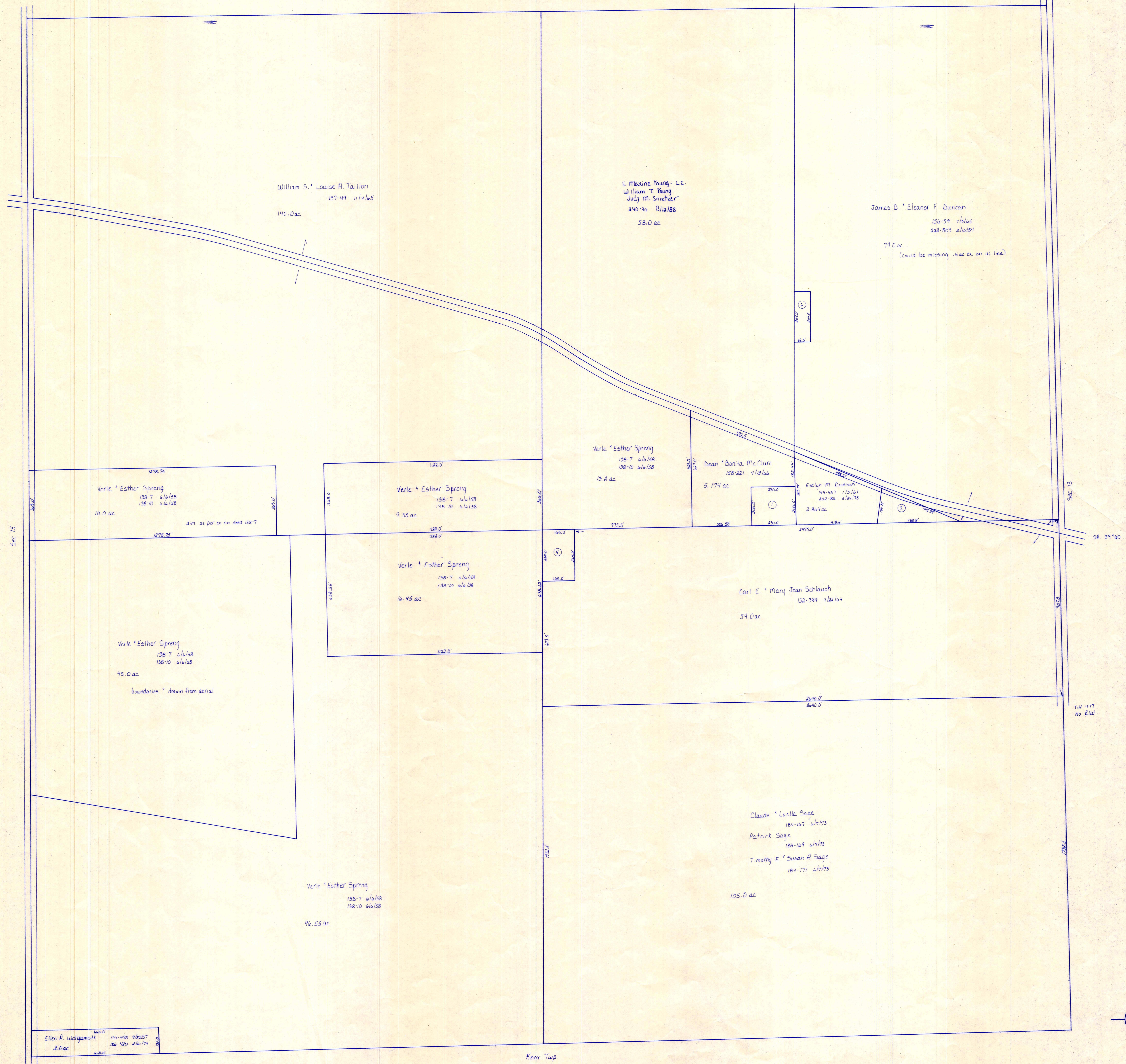


T.W. 466
Old T.W. 271
No E.L.W.

Sec. 11

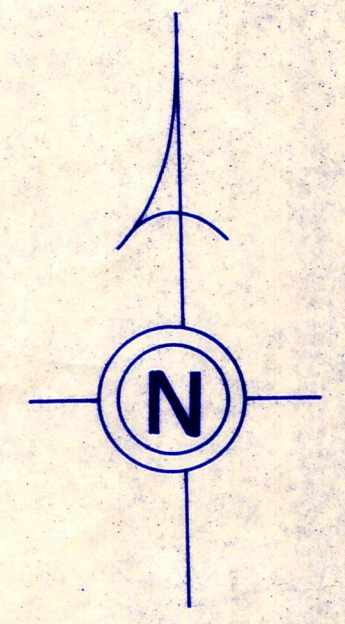
S. R. 179

S. R. 39 '60



T.W. 466
Old T.W. 271
No E.L.W.

- ① Roger L. & Sara McClure 220-43 4/2/85 1.056 ac p. 10-17
- ② E. Maxine Young - L.E.; William T. Young & Judy M. Smetzer 240-30 8/12/88 5 ac.
- ③ Matthew R. Moretti 224-39 6/25/84 2.906 ac p. 8-574
- ④ Verle & Esther Spreng 138-7 6/6/58, 138-10 6/6/58 10 ac.



T-19, R-15, Sec. 14
WASHINGTON TWP.
SCALE: 1" = 200'

LET IT BE KNOWN, THIS MAP HAS BEEN PREPARED AS A REFERENCE GUIDE TO PROPERTY OWNERSHIP. WE BELIEVE THIS INFORMATION TO BE CORRECT AND CURRENT, HOWEVER, IT IS NOT INTENDED FOR ANY LEGAL USE, WHETHER IT BE IN SALES, TRANSFERS, TRADES, LEASES OF ANY TYPE, ETC., AND DO NOT ACCEPT RESPONSIBILITY FOR ERRORS OF ANY NATURE OR OMISSIONS CONTAINED HEREIN.

W-21