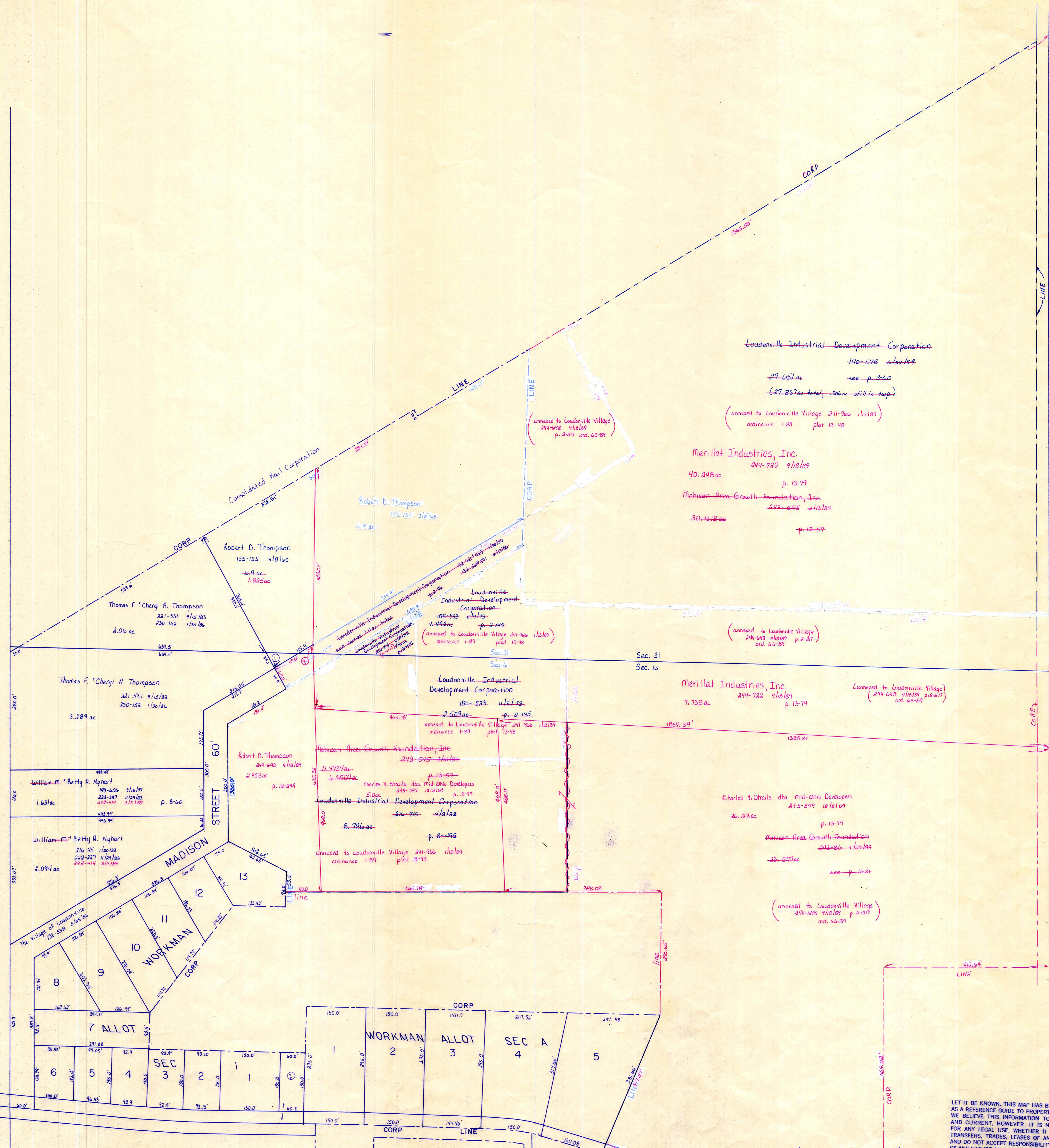
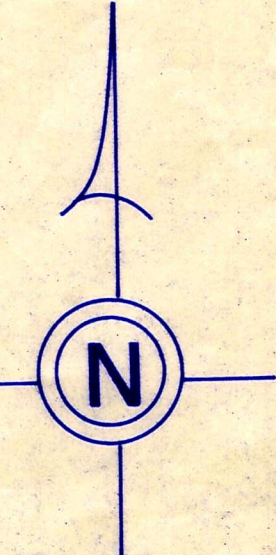


Ashland County



S.A. 60' 34'  
R/W varies  
Sec. Plans

LET IT BE KNOWN, THIS MAP HAS BEEN PREPARED AS A REFERENCE GUIDE TO PROPERTY OWNERSHIP. WE BELIEVE THIS INFORMATION TO BE CORRECT FOR CURRENT, HOWEVER, IT IS NOT INTENDED FOR ANY LEGAL USE, WHETHER IT BE IN SALES, TRANSFERS, TRADES, LEASES OF ANY TYPE, ETC. AND DO NOT ACCEPT RESPONSIBILITY FOR ERRORS OF ANY NATURE OR OMISSIONS CONTAINED HEREIN.



# incorporated LOUDONVILLE VILLAGE

T-19, R-15, Sec. 6 + T-20, R-15, Sec. 31

WASHINGTON TWP.

SCALE: 1" = 100'

# W-3A

T.H. 455  
Old T.H. 259  
40' R/W

S.R. 39' 60'  
R/W varies  
see plans