

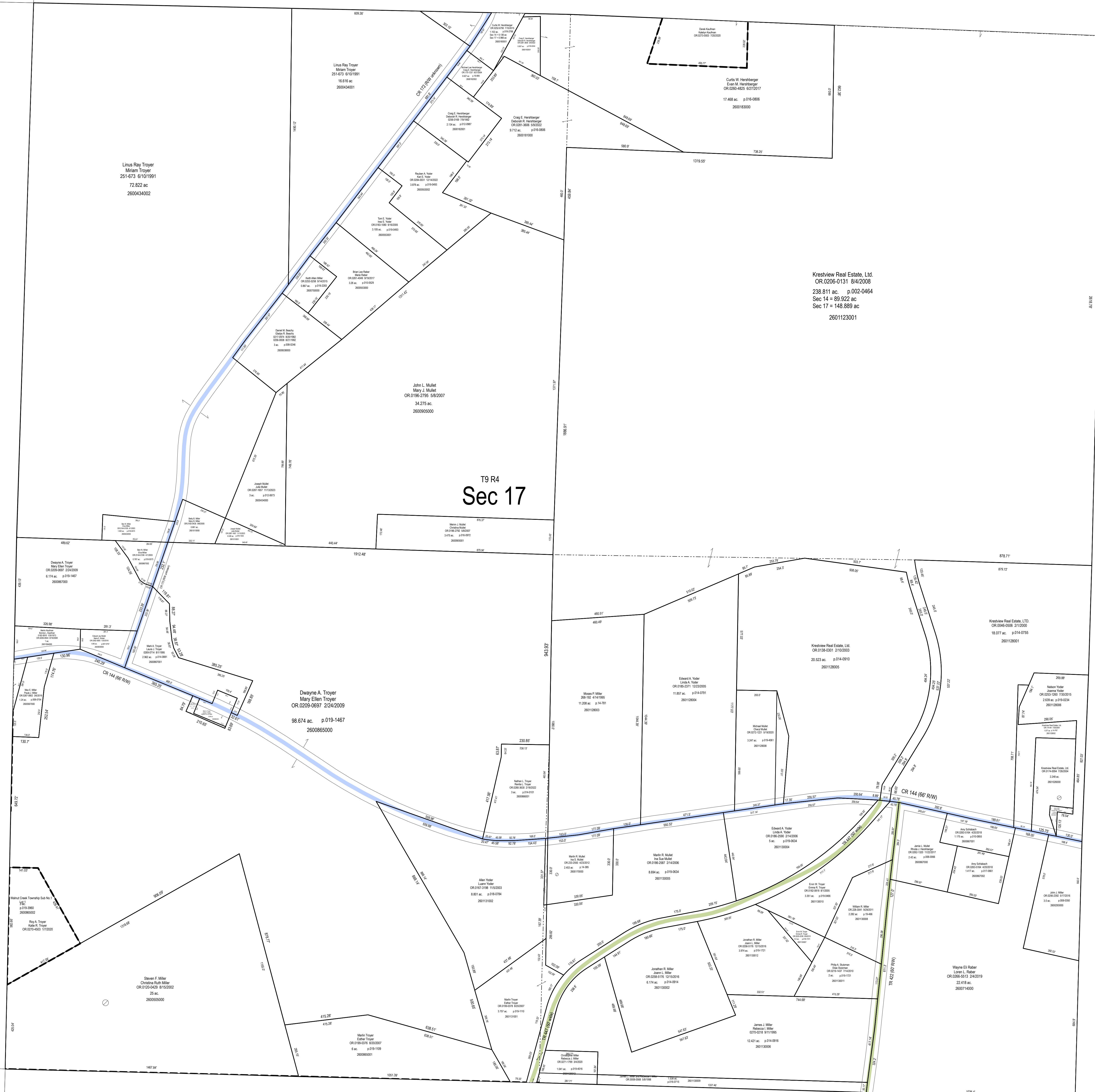
WC-21

WC-27

WC-20

WC-19

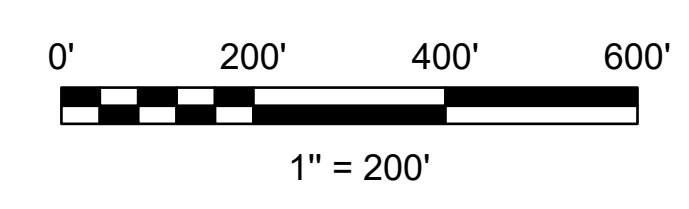
WC-25



T9 R4
Sec 17

Kreshview Real Estate, Ltd.
 OR 0206-0131 8/4/2008
 238.811 ac. p.002-0464
 Sec 14 = 89.922 ac
 Sec 17 = 148.889 ac
 2601123001

Dwayne A. Troyer
 Mary Ellen Troyer
 OR 0219-3637 2/24/2009
 98.674 ac. p.019-1467
 2600865000



LET IT BE KNOWN, THIS MAP HAS BEEN PREPARED AS A REFERENCE GUIDE TO PROPERTY OWNERSHIP. WE BELIEVE THIS INFORMATION TO BE CORRECT AND CURRENT, HOWEVER IT IS NOT INTENDED FOR ANY LEGAL USE, WHETHER IT BE SALES, TRANSFERS, TRADES, LEASES OF ANY TYPE, ETC. AND DO NOT ACCEPT RESPONSIBILITY FOR ERRORS OF ANY NATURE OR OMISSIONS CONTAINED HEREIN.

S.F.T.
 new survey required for next transfer



**Sec. 17, T-9, R-4
 Walnut Creek Twp.
 Holmes County, Ohio**

WC-26

Last Revision: 1/2/2024