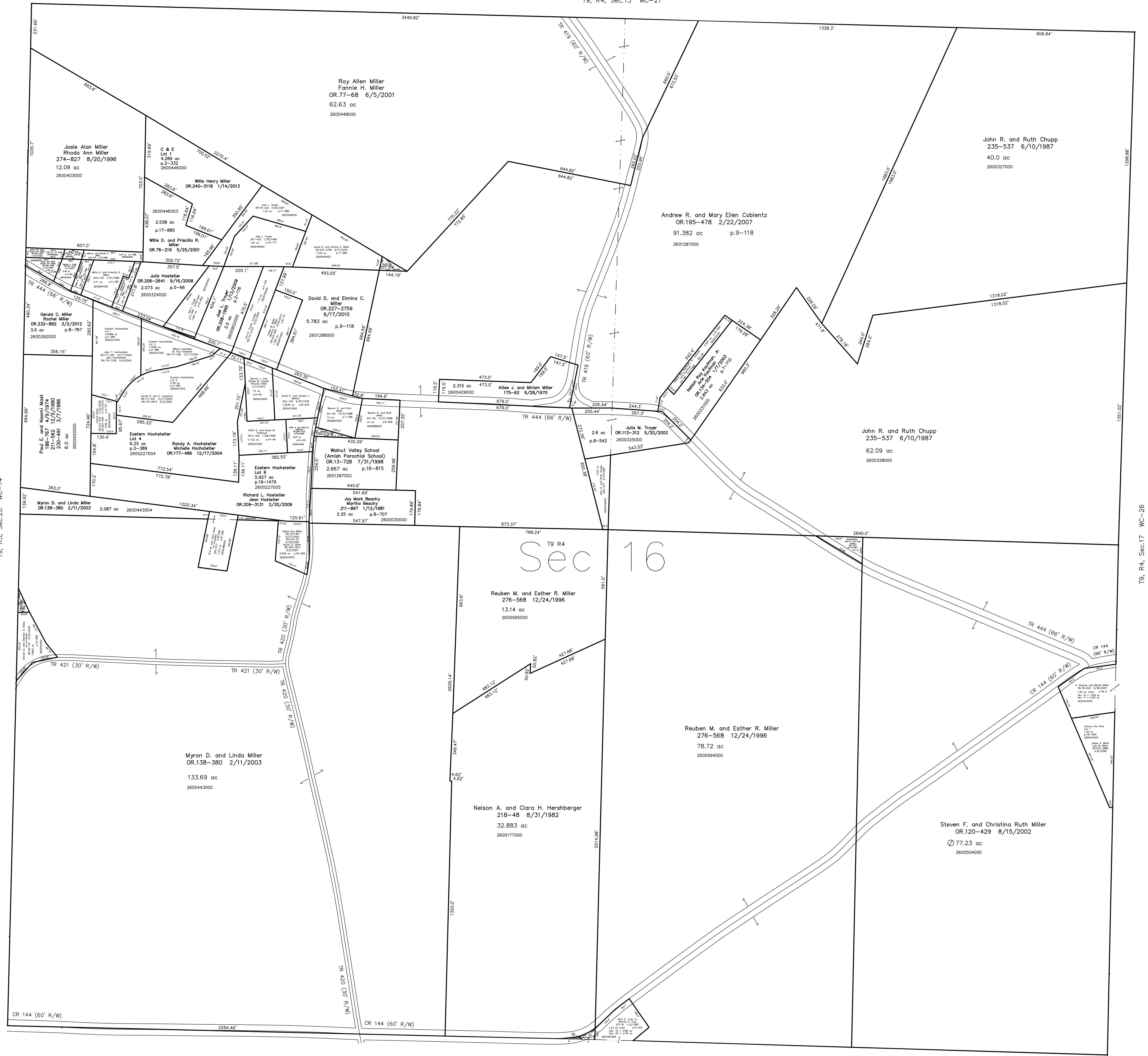


260017001 (1) John E. Ling, Jr. and Sharon E. Ling
250-73 1/15/1991
0.06 ac p.12-598

2600178002 (2) Marcus M. Rober and Sharon Rober
OR.63-918 12/13/2000
0.017 ac p.17-722

T9, R4, Sec.15 WC-21



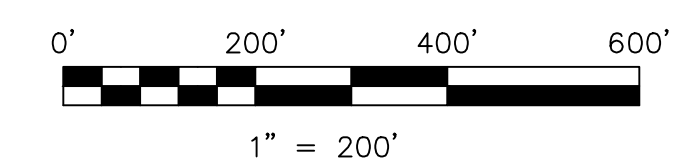
T9, R4, Sec.25 WC-19

C & F Subdivision
Plat 2-332 Platted 6/5/2001

Eastern Hostetler Allotment
Plat 2-389 Platted 12/8/2004

Eastern Hostetler Allotment Replat of Lot 5
Plat 19-1479 Platted 3/19/2009

Hickory Nut Row Subdivision
Plat 19-1264 Platted 3/12/2008



LET IT BE KNOWN, THIS MAP HAS BEEN PREPARED AS A REFERENCE GUIDE TO PROPERTY OWNERSHIP. WE BELIEVE THIS INFORMATION TO BE CORRECT AND CURRENT. HOWEVER, IT IS NOT INTENDED FOR ANY LEGAL USE, WHETHER IT BE IN SALES, TRANSFERS, TRADES, LEASES OF ANY TYPE, ETC., AND DO NOT ACCEPT RESPONSIBILITY FOR ERRORS OF ANY NATURE OR OMISSIONS CONTAINED HEREIN.

new survey required
for next transfer

Last Revision: 4/29/2013
T-9, R-4, Sec.16
Walnut Creek Twp.
Holmes County, Ohio

WC-20

T9, R4, Sec.17 WC-26