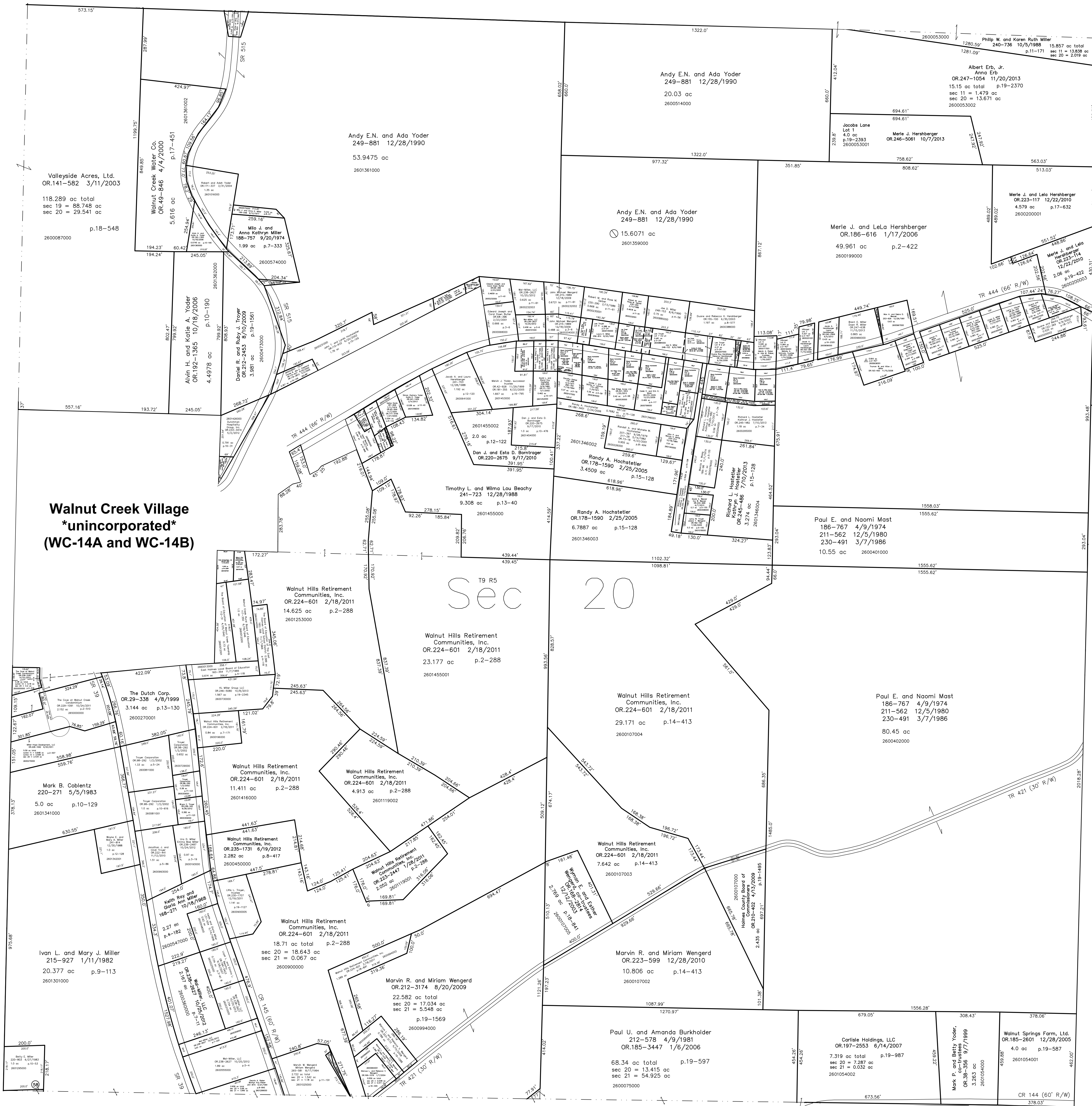


- 2601424000 ⑩ Leroy Beachy, trustee
OR.122-140 9/5/2002
0.0077 ac p.10-352
- 2600900001 ②⑥ Marvin W. Wengert and Miriam Wengert
265-581 8/17/1994
0.05 ac p.11-191
- 2600900003 ②① Marvin W. Wengert and Miriam Wengert
267-108 12/29/1994
0.062 ac p.14-685
- 2601300000 ⑥ Jesse D. Stutzman and Esta E. Stutzman
220-808 6/27/1983
0.072 ac p.9-113

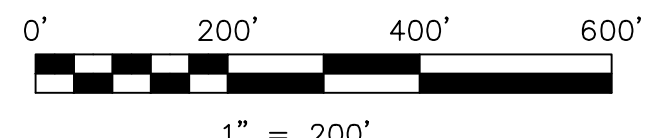


T9, R5, Sec. 19 WC-08

T9, R4, Sec. 16 WC-20

- The Cove at Walnut Creek Condominium Phase 1
Plat 2-510 Declaration OR.229-1091 10/24/2011
2.152 ac 2650000000 Master Condominium Identification
see plat vol.19, pgs. 1929 thru 1938 for floorplans
- Unit 9 2650000001 Eric L. Miller, Luzann Miller,
Elizabeth J. Miller, Nancy L. Ferris
OR.234-286 5/7/2012
 - Unit 10 2650000002 Chad A. Stutzman and Vikki L. Stutzman
OR.233-64 3/27/2012
 - Unit 17 2650000003 Miller-Hope Development, LLC
OR.228-1692 9/20/2011
 - Unit 18 2650000004 Miller-Hope Development, LLC
OR.228-1692 9/20/2011
 - Unit 19 2650000005 Malinda Jane Hershberger
OR.237-1876 9/5/2012
 - Unit 20 2650000006 Craig S. Troyer and Carolyn Troyer
OR.242-409 3/13/2013
 - Unit 21 2650000007 Miller-Hope Development, LLC
OR.228-1692 9/20/2011
 - Unit 22 2650000008 Miller-Hope Development, LLC
OR.228-1692 9/20/2011
- The Cove at Walnut Creek Condominium Phase 2
Plat 2-518 Declaration OR.238-2287 10/22/2012
0.38 ac 2650000000 Master Condominium Identification
see plat vol.19, pgs. 2146 thru 2148 for floorplans
- Unit 5 2650000009 Daron G. Horrisberger
Alice L. Horrisberger
OR.238-2599 10/25/2012
 - Unit 6 2650000010 Gregory E. Curry and Karen Curry
OR.238-2646 12/4/2012

- Hillcrest Allotment Replat
Plat 2-427 Platted 5/11/2006
- Jacobs Lane Subdivision
Plat 19-2393 Platted 12/18/2013
- Lee Troyer Allotment
Plat 3-24 Platted 7/24/1958
- Wayne Hochstetler Allotment
Plat 3-50 Platted 4/23/1959



LET IT BE KNOWN, THIS MAP HAS BEEN PREPARED AS A REFERENCE
GUIDE TO PROPERTY OWNERSHIP. WE BELIEVE THIS INFORMATION TO
BE CORRECT AND CURRENT, HOWEVER IT IS NOT INTENDED FOR ANY
LEGAL USE, WHETHER IT BE IN SALES, TRANSFERS, TRADES, LEASES
OF ANY TYPE, ETC., AND DO NOT ACCEPT RESPONSIBILITY FOR
ERRORS OF ANY NATURE OR OMISSIONS CONTAINED HEREIN.

new survey required
for next transfer

Last Revision: 12/18/2013

T-9, R-5, Sec.20
Walnut Creek Twp.
Holmes County, Ohio

WC-14