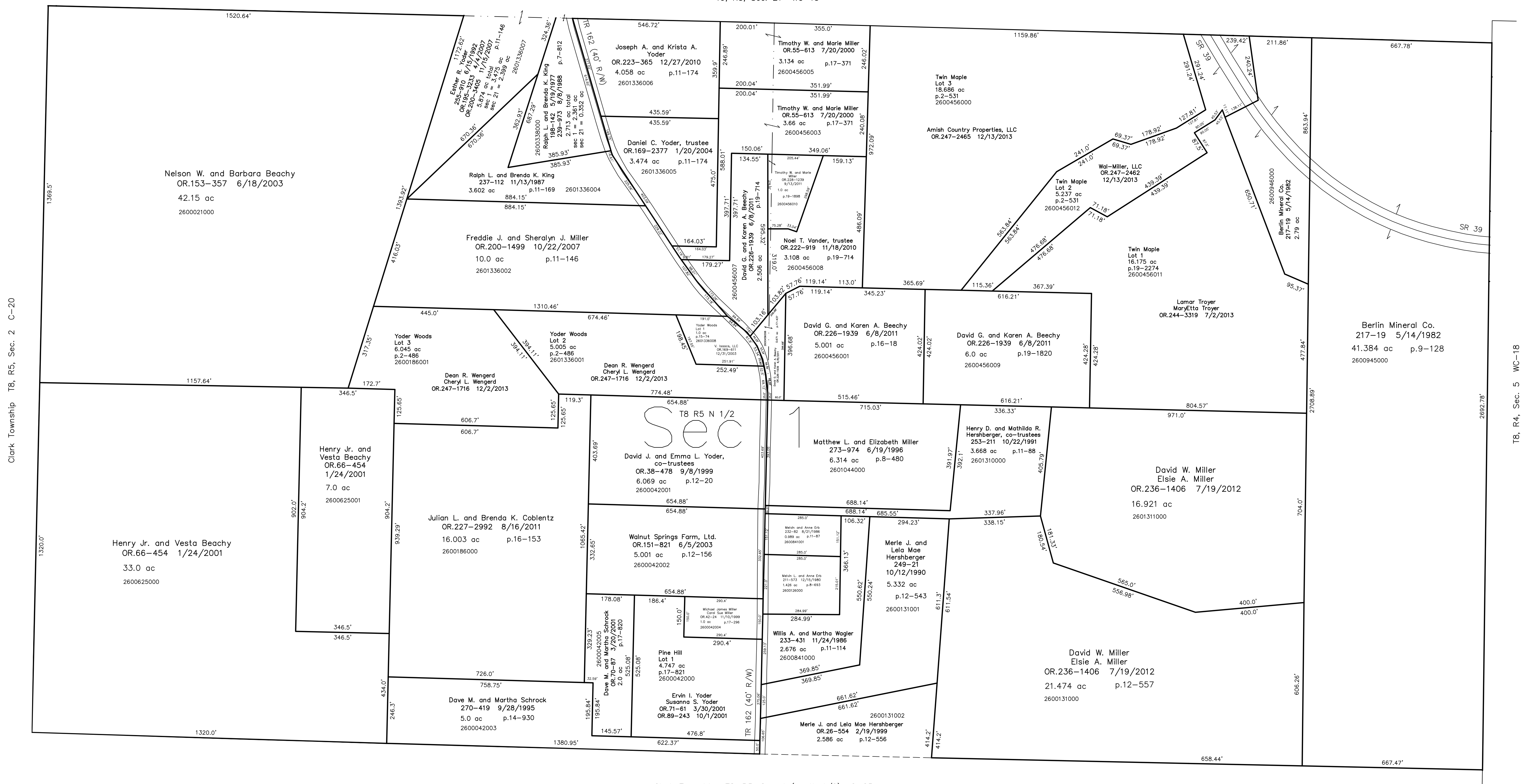


T9, R5, Sec. 21 WC-13

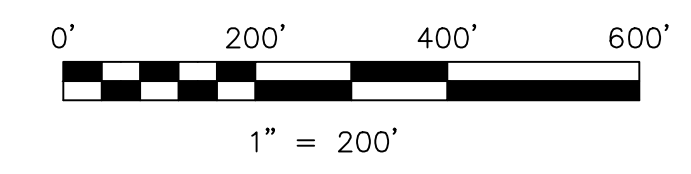


Clark Township T8, R5, Sec. 1 (south 1/2) C-25

Clark Township T8, R5, Sec. 2 C-20

T8, R4, Sec. 5 WC-18

- Pine Hill Subdivision
Plat 17-821 Platted 3/20/2001
- Twin Maple Subdivision
Plat 19-2274 Platted 6/12/2013
- Twin Maple Subdivision First Addition
Plat 2-531 Platted 10/10/2013
- Yoder Woods Allotment No.1
Plat 15-74 Platted 12/21/1995
- Yoder Woods Allotment No.1 First Addition
Plat 2-486 Platted 3/15/2010



LET IT BE KNOWN, THIS MAP HAS BEEN PREPARED AS A REFERENCE GUIDE TO PROPERTY OWNERSHIP. WE BELIEVE THIS INFORMATION TO BE CORRECT AND CURRENT, HOWEVER IT IS NOT INTENDED FOR ANY LEGAL USE, WHETHER IT BE IN SALES, TRANSFERS, TRADES, LEASES OF ANY TYPE, ETC., AND DO NOT ACCEPT RESPONSIBILITY FOR ERRORS OF ANY NATURE OR OMISSIONS CONTAINED HEREIN.

new survey required for next transfer

Last Revision: 12/13/2013
T-8, R-5, Sec.1 (north 1/2)
Walnut Creek Twp.
Holmes County, Ohio

WC-12