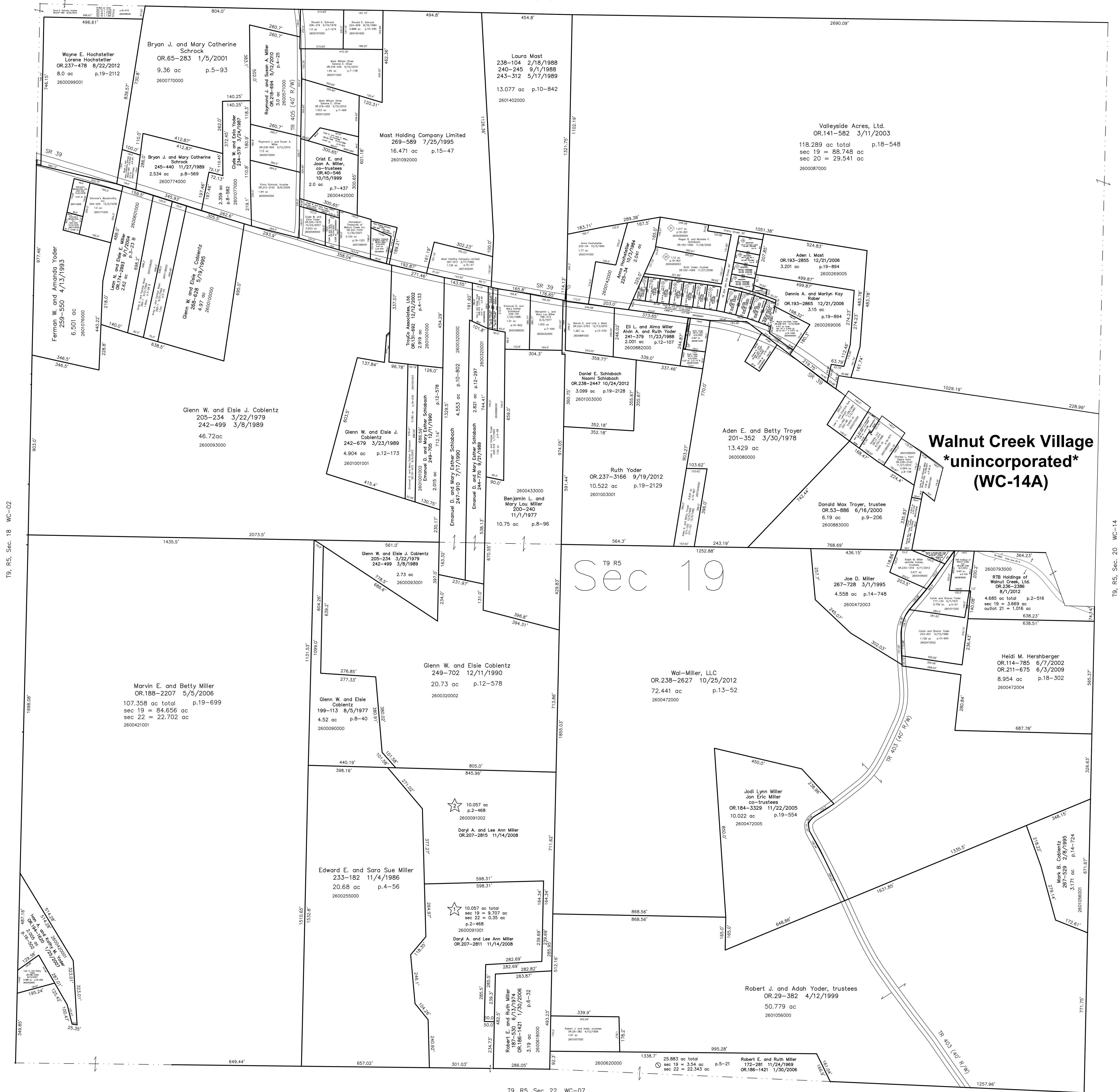


- 2600141001 ① Anna Hochstetler
235-34 10/3/1984
0.007 ac
- 2600269007 ② Dennis A. and Marilyn Kay Rober
OR.193-2865 12/21/2006
0.051 ac p.19-894
- 2600672001 ③ Ruth Yoder
OR.71-252 4/2/2001
0.04 ac p.3-74 B



T9, R5, Sec. 18 WC-02

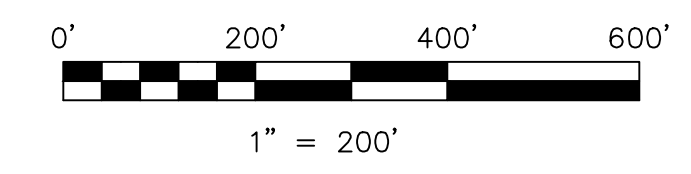
T9, R5, Sec. 20 WC-14

T9, R5, Sec. 22 WC-07

- ◇ Albert Horrisberger's Subdivision
Plat 3-70 Platted 8/29/1959
- ◇ Albert Horrisberger's Subdivision
Replat & Renumbering of Lots 12,
13, 14 & 15 and Additional Lands
Plat 19-821 Platted 10/4/2006
- ☆ Miller Road Subdivision
Plat 2-468 Platted 11/12/2008

Last Revision: 11/27/2012

T-9, R-5, Sec.19
Walnut Creek Twp.
Holmes County, Ohio



LET IT BE KNOWN, THIS MAP HAS BEEN PREPARED AS A REFERENCE
 GUIDE TO PROPERTY OWNERSHIP. WE BELIEVE THIS INFORMATION TO
 BE CORRECT AND CURRENT. HOWEVER, IT IS NOT INTENDED FOR ANY
 LEGAL USE, WHETHER IT BE IN SALES, TRANSFERS, TRADES, LEASES
 OF ANY TYPE, ETC., AND DO NOT ACCEPT RESPONSIBILITY FOR
 ERRORS OF ANY NATURE OR OMISSIONS CONTAINED HEREIN.

○ new survey required
 for next transfer

WC-08