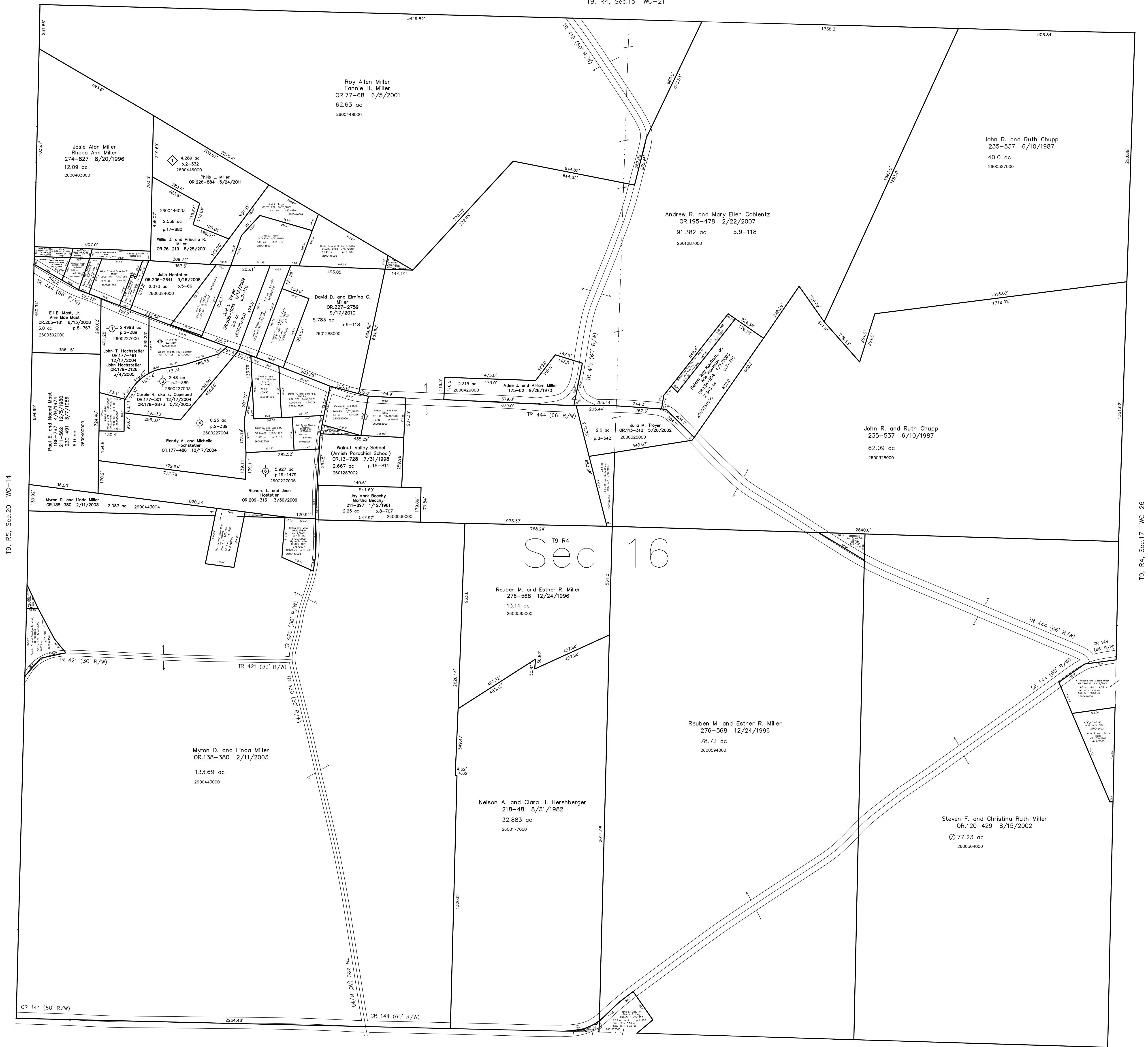


2600177001 ① John E. Ling, Jr. and Sharon E. Ling
250-73 1/15/1991
0.06 ac p.12-598

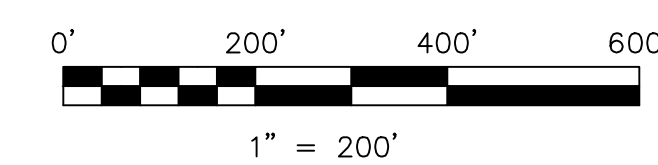
2600178002 ② Marcus M. and Sharon Raber
OR.63-918 12/13/2000
0.017 ac p.17-722

T9, R4, Sec.15 WC-21



- ◇ C & F Subdivision
Plot 2-332 Platted 6/5/2001
- ⊙ Eastern Hochstetler Allotment
Plot 2-389 Platted 12/8/2004
- ⊙ Eastern Hochstetler Allotment Replat of Lot 5
Plot 19-1479 Platted 3/19/2009
- ☆ Hickory Nut Row Subdivision
Plot 19-1264 Platted 3/12/2008

T9, R4, Sec.25 WC-19



LET IT BE KNOWN, THIS MAP HAS BEEN PREPARED AS A REFERENCE GUIDE TO PROPERTY OWNERSHIP. WE BELIEVE THIS INFORMATION TO BE CORRECT AND CURRENT. HOWEVER, IT IS NOT INTENDED FOR ANY LEGAL USE, WHETHER IT BE IN SALES, TRANSFERS, TRADES, LEASES OF ANY TYPE, ETC., AND DO NOT ACCEPT RESPONSIBILITY FOR ERRORS OF ANY NATURE OR OMISSIONS CONTAINED HEREIN.

⊙ new survey required
for next transfer

Last Revision: 5/24/2011
T-9, R-4, Sec.16
Walnut Creek Twp.
Holmes County, Ohio

WC-20

T9, R4, Sec.17 WC-26