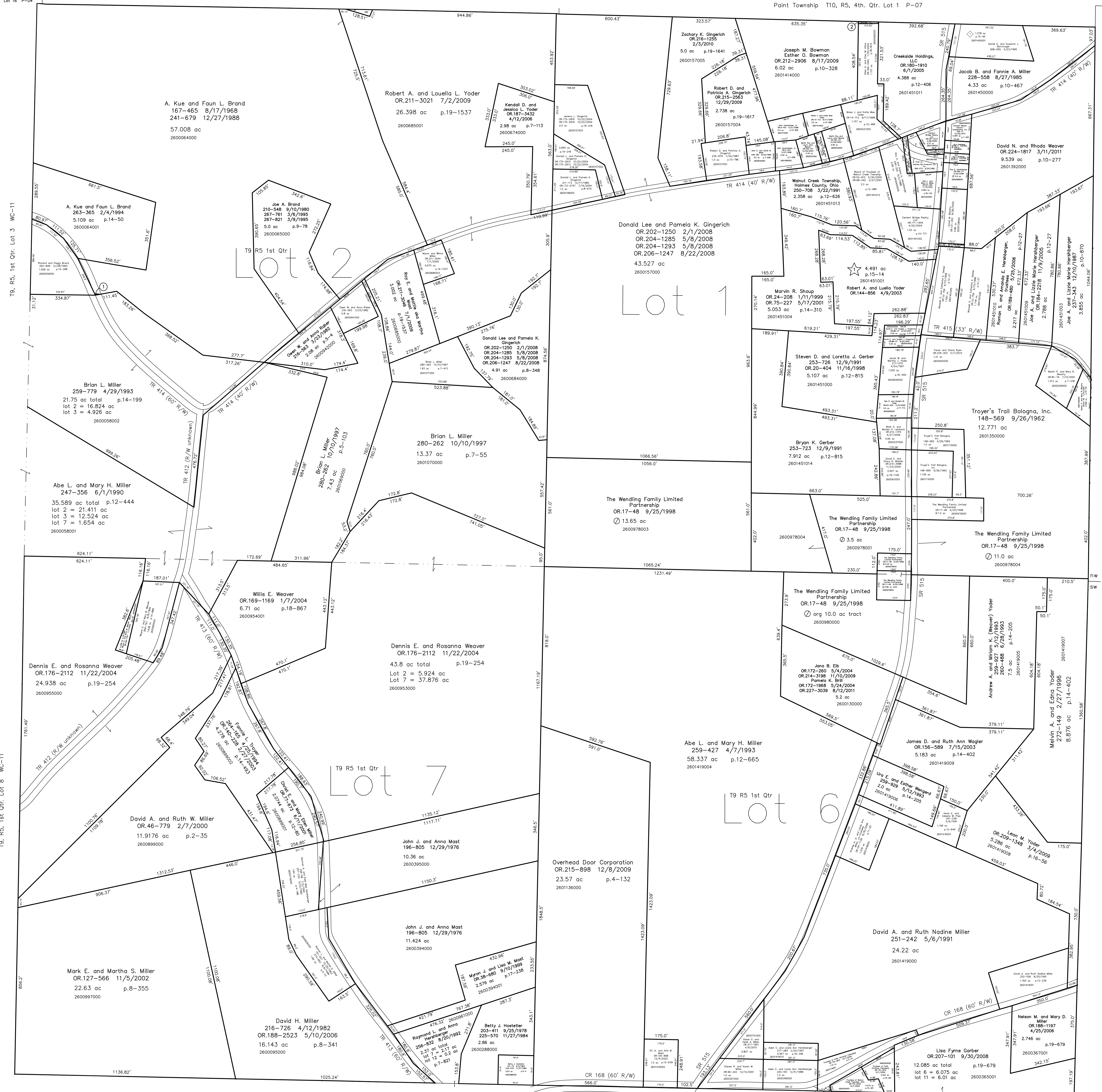


- 2600058000 ① A. Kue and Faun L. Brand  
132-342 4/3/1956  
241-677 12/27/1988  
0.036 ac
- 2601513000 ② Allen H. and Elsa M. Kline  
OR.169-1940 1/20/2004  
0.022 ac p.18-574
- 2600319000 ③ Cement Bridge Realty, Ltd.  
OR.187-2274 3/28/2006  
0.05 ac



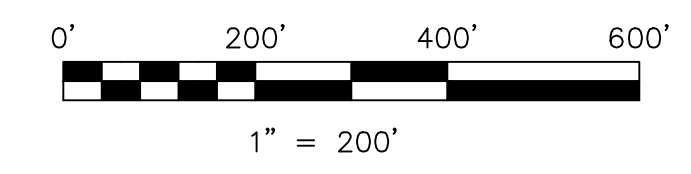
T9, R5, 1st. Qtr. Lot 3 WC-11

T9, R5, 1st. Qtr. Lot 8 WC-11

T9, R5, 1st. Qtr. Lot 12 WC-16

T9, R5, 1st. Qtr. Lot 11 WC-16

- ☆ Douglas L. Gingerich Allotment No.1  
Plot 15-14 Platted 9/20/1993
- ◇ Miller's Hill Top View Allotment No.1  
Plot 15-46 Platted 1/27/1995



LET IT BE KNOWN, THIS MAP HAS BEEN PREPARED AS A REFERENCE GUIDE TO PROPERTY OWNERSHIP. WE BELIEVE THIS INFORMATION TO BE CORRECT AND CURRENT. HOWEVER, IT IS NOT INTENDED FOR ANY LEGAL USE, WHETHER IT BE IN SALES, TRANSFERS, TRADES, LEASES OF ANY TYPE, ETC., AND DO NOT ACCEPT RESPONSIBILITY FOR ERRORS OF ANY NATURE OR OMISSIONS CONTAINED HEREIN.

new survey required for next transfer

Last Revision: 8/12/2011  
**T-9, R-5, 1st. Qtr.**  
**Lots 1,2,6,7**  
**Walnut Creek Twp.**  
**Holmes County, Ohio**

**WC-17**

T9, R4, Sec. 5 WC-23