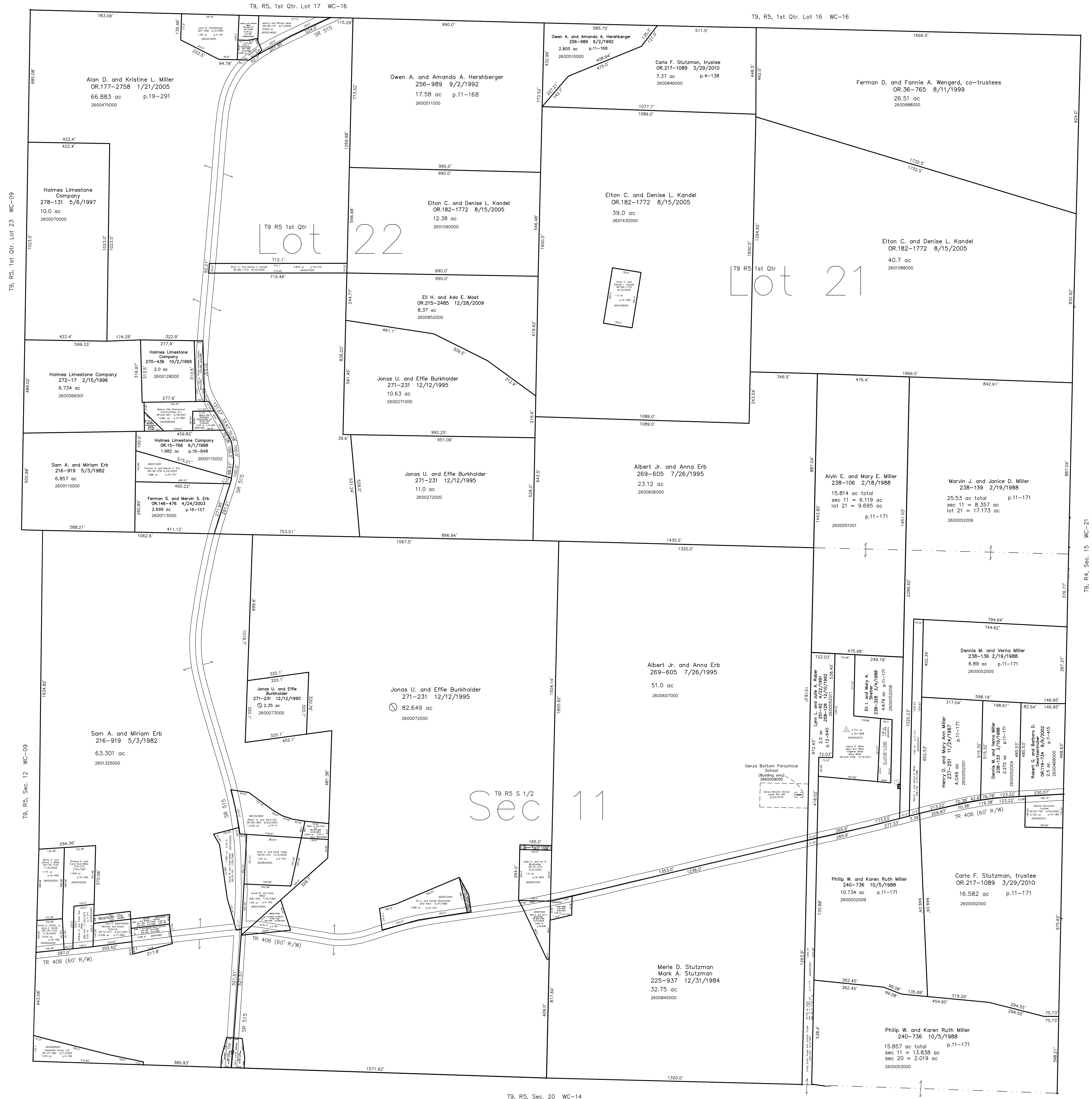


2600052013 ① Alvin E. and Mary E. Miller
268-330 5/11/1995
0.007 ac p.14-796



T9, R5, 1st Qtr. Lot 23 WC-09

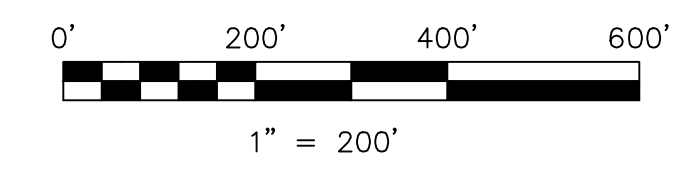
T9, R5, Sec. 12 WC-09

T9, R5, Sec. 20 WC-14

T9, R4, Sec. 15 WC-21

Genza Bottom Subdivision
Replat of Lot 1 and Additional Lands
Plat 19-1808 Platted 3/8/2011

Last Revision: 3/15/2011
T-9, R-5, Sec.11
1st.Qtr. Lots 21,22
Walnut Creek Twp.
Holmes County, Ohio



LET IT BE KNOWN, THIS MAP HAS BEEN PREPARED AS A REFERENCE GUIDE TO PROPERTY OWNERSHIP. WE BELIEVE THIS INFORMATION TO BE CORRECT AND CURRENT, HOWEVER IT IS NOT INTENDED FOR ANY LEGAL USE, WHETHER IT BE IN SALES, TRANSFERS, TRADES, LEASES OF ANY TYPE, ETC. AND DO NOT ACCEPT RESPONSIBILITY FOR ERRORS OF ANY NATURE OR OMISSIONS CONTAINED HEREIN.

Ⓝ new survey required
for next transfer

WC-15