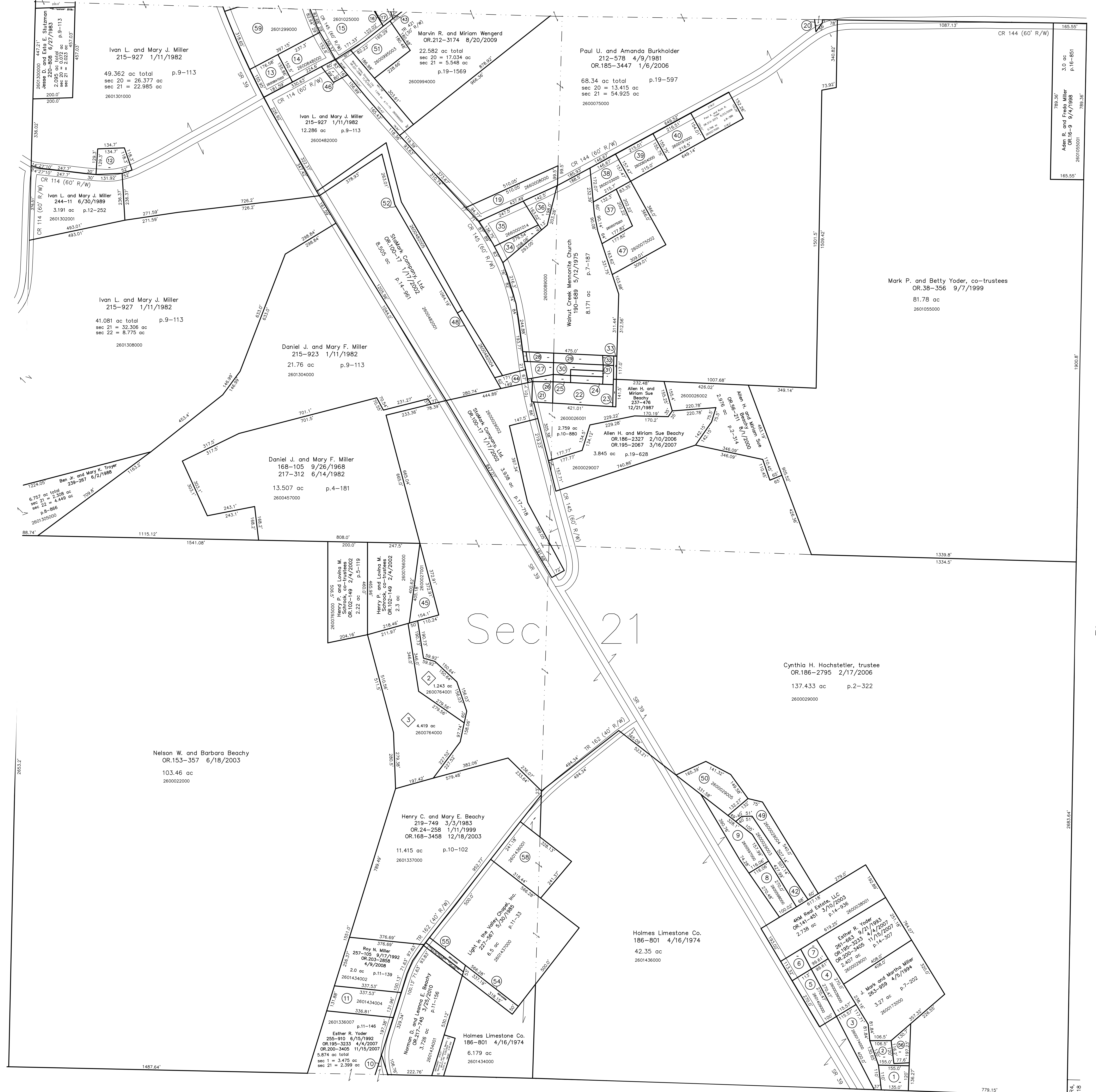


- 2600410000 ① Twila H. and Ruby H. Beachy  
OR.53-398 6/8/2000  
0.412 ac
- 2600129000 ② Twila H. and Ruby H. Beachy  
OR.53-398 6/8/2000  
0.288 ac
- 2600174000 ③ J. Mark and Martha Miller  
263-959 4/9/1994  
0.856 ac p.5-11
- 2600039000 ④ Esther R. Yoder  
263-410 11/20/1986  
OR.200-3405 11/15/2007  
0.47 ac p.8
- 2601409000 ⑤ Esther R. Yoder  
233-410 11/20/1986  
OR.195-3233 4/4/2007  
OR.200-3405 11/15/2007  
0.6605 ac p.10-325
- 2601410000 ⑥ Esther R. Yoder  
233-410 11/20/1986  
OR.195-3233 4/4/2007  
OR.200-3405 11/15/2007  
0.3015 ac p.10-325
- 2600038000 ⑦ Esther R. Yoder  
233-410 11/20/1986  
OR.195-3233 4/4/2007  
OR.200-3405 11/15/2007  
0.251 ac p.6-1
- 2600598000 ⑧ Daniel L. and Edna A. Hostetter  
256-619 8/6/1992  
0.67 ac p.6-1
- 2600597000 ⑨ Daniel L. and Edna A. Hostetter  
256-619 8/6/1992  
0.853 ac p.6-1
- 2600338000 ⑩ Ralph L. and Brenda K. King  
198-142 5/9/1977  
233-973 6/5/1968  
0.352 ac p.7-812
- 2601434004 ⑪ Roy N. Miller  
257-105 9/17/1992  
OR.203-3854 4/9/2008  
1.0 ac p.14-40
- 2601302000 ⑫ Ivan L. and Mary J. Miller  
OR.16-11 9/4/1998  
0.464 ac p.9-113
- 2600847000 ⑬ Adrian S. and Amanda E. Wengard  
220-819 6/28/1983  
0.643 ac
- 2600848000 ⑭ Adrian S. and Amanda E. Wengard  
220-819 6/28/1983  
0.78 ac p.3-8
- 2601025000 ⑮ Marvin W. and Miriam Wengard  
265-581 8/17/1994  
1.18 ac p.11-191
- 2600900001 ⑯ Marvin W. and Miriam Wengard  
265-581 8/17/1994  
0.002 ac p.11-191
- 2600900000 ⑰ Walnut Hills, Inc.  
OR.15-75 8/20/1998  
0.067 ac p.2-288
- 0000000000 ⑱ not used
- 2600008000 ⑲ Walnut Creek Mennonite Church  
190-689 5/12/1975  
0.979 ac p.7-187
- 2601054002 ⑳ Carlisle Holdings, LLC  
OR.197-2553 6/14/2007  
0.032 ac p.19-987
- 2600001000 ㉑ Walnut Creek Mennonite Church  
190-689 5/12/1975  
0.28 ac
- 2600001001 ㉒ Walnut Creek Mennonite Church  
190-689 5/12/1975  
0.72 ac
- 2600001002 ㉓ Walnut Creek Mennonite Church  
190-689 5/12/1975  
0.049 ac
- 2600001003 ㉔ Walnut Creek Mennonite Church  
190-689 5/12/1975  
0.125 ac
- 2600001004 ㉕ Walnut Creek Mennonite Church  
190-689 5/12/1975  
0.06 ac
- 2600001005 ㉖ Walnut Creek Mennonite Church  
190-689 5/12/1975  
0.04 ac
- 2600001006 ㉗ Walnut Creek Mennonite Church  
190-689 5/12/1975  
0.27 ac
- 2600001007 ㉘ Walnut Creek Mennonite Church  
190-689 5/12/1975  
0.124 ac
- 2600001008 ㉙ Walnut Creek Mennonite Church  
190-689 5/12/1975  
0.305 ac
- 2600001009 ㉚ Walnut Creek Mennonite Church  
190-689 5/12/1975  
0.23 ac
- 2600001010 ㉛ Walnut Creek Mennonite Church  
190-689 5/12/1975  
0.125 ac
- 2600001011 ㉜ Walnut Creek Mennonite Church  
190-689 5/12/1975  
0.066 ac
- 2600001012 ㉝ Walnut Creek Mennonite Church  
190-689 5/12/1975  
0.038 ac
- 2600001013 ㉞ Walnut Creek Mennonite Church  
190-689 5/12/1975  
0.125 ac
- 2600001014 ㉟ Walnut Creek Mennonite Church  
190-689 5/12/1975  
0.89 ac
- 2600001015 ㊱ Walnut Creek Mennonite Church  
190-689 5/12/1975  
0.32 ac
- 2600075001 ㊲ Marcus L. and Rebecca V. Wengard  
OR.151-818 6/5/2003  
0.746 ac p.12-225
- 2600103000 ㊳ Marcus L. and Rebecca V. Wengard  
OR.151-818 6/5/2003  
0.653 ac p.8-383
- 2600654000 ㊴ William Dennis and Nancy L. Marshall  
280-83 9/24/1997  
0.772 ac p.8-384
- 2600197000 ㊵ Wayne D. and Shelly R. Troyer  
235-598 6/17/1987  
0.769 ac p.8-385
- 0000000000 ㊶ not used
- 2600029003 ㊷ Daniel L. and Edna A. Hostetter  
274-725 8/12/1996  
0.734 ac p.16-186
- 2600994001 ㊸ Marcus L. and Rebecca V. Wengard  
OR.169-1076 1/7/2004  
0.031 ac p.16-145
- 2600482002 ㊹ StaMark Company, Ltd.  
OR.100-17 1/17/2002  
0.235 ac p.16-519
- 2600027001 ㊺ Henry P. and Lovina M. Schrock, co-trustees  
OR.102-149 2/4/2002  
0.66 ac p.2-314
- 2600482003 ㊻ The Board of Holmes County Commissioners  
OR.97-724 12/27/2001  
0.181 ac p.18-165
- 2600075002 ㊼ Marcus L. and Rebecca V. Wengard  
OR.151-818 6/5/2003  
1.528 ac p.18-149
- 2600482004 ㊽ StaMark Company, Ltd.  
OR.100-17 1/17/2002  
0.292 ac p.18-180
- 2600029004 ㊾ Daniel L. and Edna Hostetter  
OR.108-970 4/3/2002  
1.074 ac p.18-251
- 2600029005 ㊿ HR Beachy, LLC  
OR.194-2665 2/8/2007  
1.091 ac p.18-280
- 2600995003 ① Brian L. and Hannah O. Wengard  
OR.176-1360 11/15/2004  
0.986 ac p.19-245
- 2600482005 ② StaMark Company, Ltd.  
OR.176-2762 12/2/2004  
0.972 ac p.19-264
- 0000000000 ③ not used
- 2601434006 ④ Light in the Valley Chapel, Inc.  
OR.183-1408 9/20/2005  
0.377 ac p.19-502
- 2601434005 ⑤ Light in the Valley Chapel, Inc.  
OR.183-1405 9/20/2005  
0.173 ac p.19-502
- 2600029006 ⑥ Twila and Ruby Beachy  
OR.186-2324 2/10/2006  
0.32 ac p.19-627
- 0000000000 ⑦ not used
- 2601436001 ⑧ Light in the Valley Chapel, Inc.  
OR.66-480 1/25/2001  
1.79 ac p.17-772
- 2601299000 ⑨ Dennis A. and Marilyn Kay Rober  
251-870 6/21/1991  
1.946 ac p.8-845

T9, R5, Sec. 22 WC-07



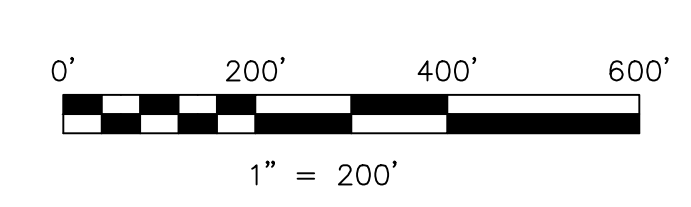
Sec 21

◆ Schrock Subdivision Replat of Lot 1  
Pilot 2-345 Platted 3/6/2002

2600764001 ◆ Robert Michael and Sue D. Schrock  
OR.107-807 3/21/2002  
1.243 ac p.2-345

2600764000 ◆ David W. Beachy  
OR.108-569 3/29/2002  
4.419 ac p.2-345

T8, R5, Sec. 1 WC-12



LET IT BE KNOWN, THIS MAP HAS BEEN PREPARED AS A REFERENCE GUIDE TO PROPERTY OWNERSHIP. WE BELIEVE THIS INFORMATION TO BE CORRECT AND CURRENT. HOWEVER, IT IS NOT INTENDED FOR ANY LEGAL USE, WHETHER IT BE IN SALES, TRANSFERS, TRADES, LEASES OF ANY TYPE, ETC., AND DO NOT ACCEPT RESPONSIBILITY FOR ERRORS OF ANY NATURE OR OMISSIONS CONTAINED HEREIN.

○ new survey required  
○ for next transfer

Last Revision: 11/5/2010

**T-9, R-5, Sec.21**  
**Walnut Creek Twp.**  
**Holmes County, Ohio**

# WC-13

T9, R4, Sec. 25 WC-19

T8, R4, Sec. 5 WC-16