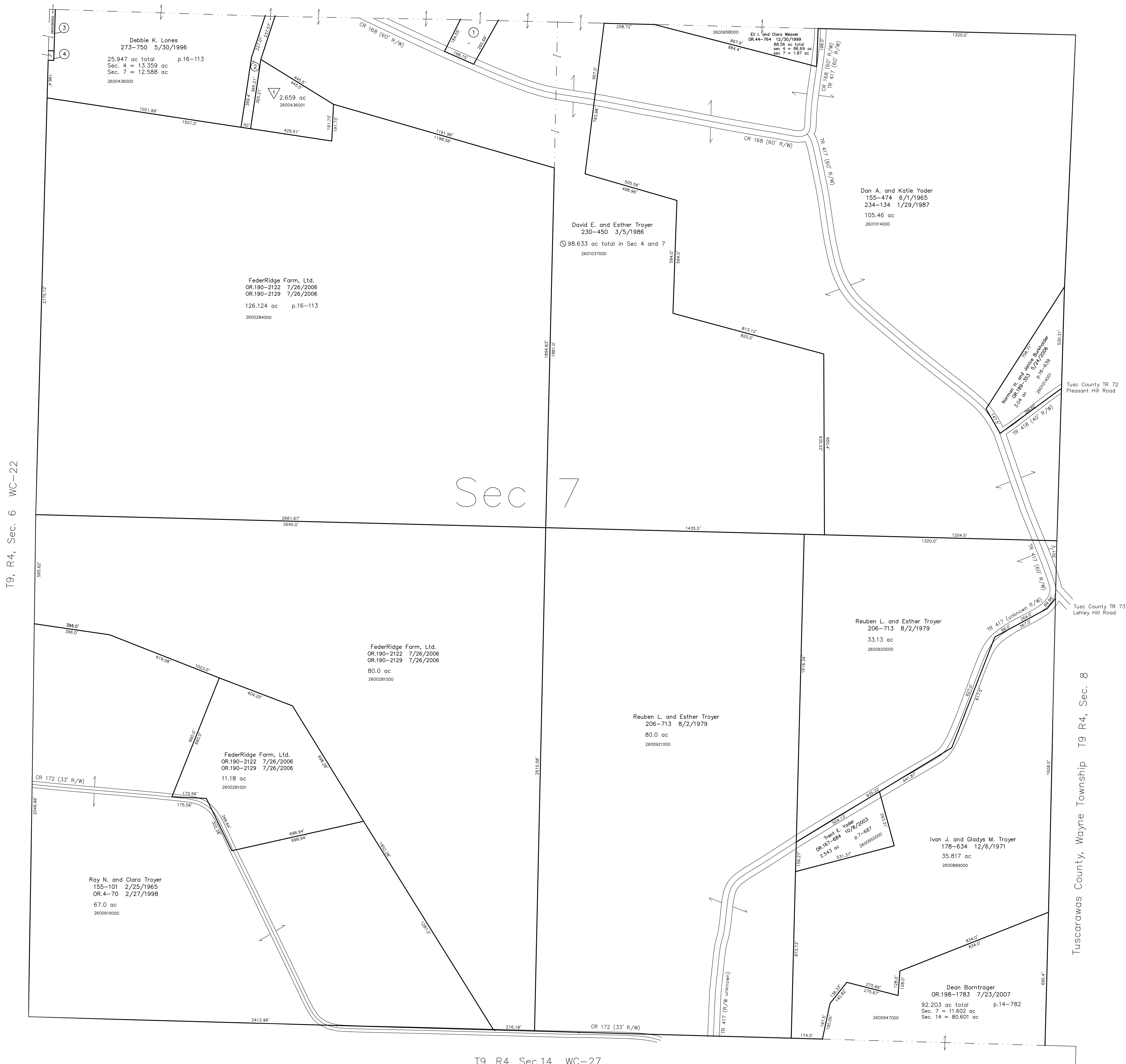


- 2601035001 ① Marcus W. Miller and Leonna Troyer
OR.140-491 3/3/2003
0.875 ac p.19-539
- 2600436003 ② FederRidge Farm, Ltd.
OR.190-2122 7/26/2006
OR.190-2129 7/26/2006
0.688 ac p.19-747
- 2800280002 ③ Ervin A. Miller
OR.190-2156 7/26/2006
OR.190-2161 7/26/2006
0.147 ac p.19-771

T9, R4, Sec.4 WC-29

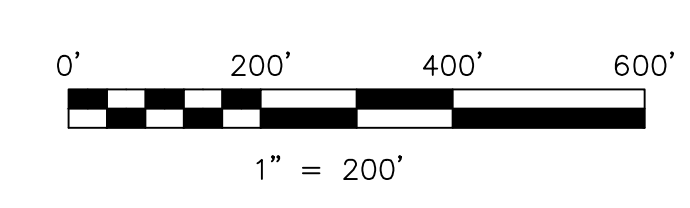


T9, R4, Sec. 6 WC-22

Tuscarawas County, Wayne Township T9 R4, Sec. 8

T9, R4, Sec.14 WC-27

- ▽ Verrico Subdivision
Plat 19-688 Platted 4/26/2006
- 2600436001 ▽ Debbie K. Lones
OR.208-2303 1/20/2009
2.659 ac p.19-688



LET IT BE KNOWN, THIS MAP HAS BEEN PREPARED AS A REFERENCE GUIDE TO PROPERTY OWNERSHIP. WE BELIEVE THIS INFORMATION TO BE CORRECT AND CURRENT, HOWEVER IT IS NOT INTENDED FOR ANY LEGAL USE, WHETHER IT BE IN SALES, TRANSFERS, TRADES, LEASES OF ANY TYPE, ETC., AND DO NOT ACCEPT RESPONSIBILITY FOR ERRORS OF ANY NATURE OR OMISSIONS CONTAINED HEREIN.

⊖ new survey required
for next transfer

Last Revision: 1/20/2009
T-9, R-4, Sec.7
Walnut Creek Twp.
Holmes County, Ohio

WC-28

