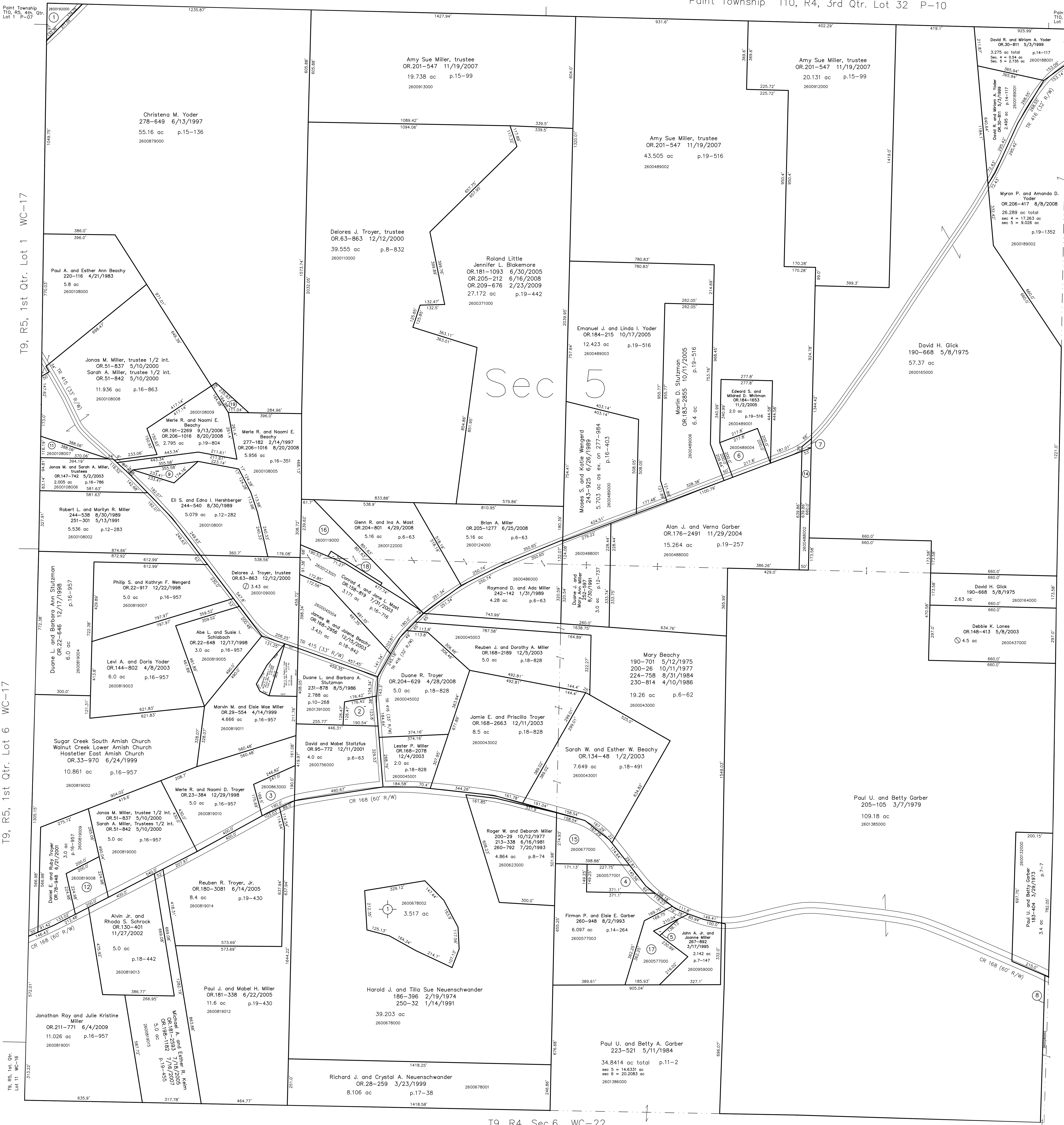


- 2600192000 ① Mose A. and Edna S. Miller
254-54 1/8/1992
0.21 ac p.7-994
- 2601390000 ② Henry E. and Lynn Rober
224-81 6/26/1984
0.595 ac p.10-268
- 2600863000 ③ Leon D. and Laura Mae Beller
273-780 9/4/1997
0.83 ac p.7-172
- 2600577001 ④ Firman P. and Elsie E. Garber
260-948 8/2/1993
1.0 ac p.12-99
- 2600577002 ⑤ John A. Jr. and Joanne Miller
267-892 3/17/1995
0.063 ac p.12-99
- 2600489004 ⑥ Edward S. and Mildred D. Whitman
OR.184-1653 11/2/2005
1.0 ac p.17-777
- 2600489005 ⑦ Paul U. and Betty A. Garber
OR.176-2487 11/29/2004
0.043 ac p.19-257
- 2600280002 ⑧ Ervin A. Miller
OR.190-2156 7/26/2006
OR.190-2161 7/26/2006
0.363 ac p.19-771
- 2600108003 ⑨ Eli S. and Edna I. Hershberger
271-176 2/14/1997
0.401 ac p.16-351
- 2600108004 ⑩ Paul A. and Esther Ann Beachy
277-179 2/14/1997
0.159 ac p.16-351
- 2600108007 ⑪ Jonas M. and Sarah A. Miller, trustees
OR.147-742 5/2/2003
0.494 ac p.16-786
- 2600819008 ⑫ Eli J. and Marcella E. Wengard
OR.23-232 12/28/1998
1.0 ac p.16-957
- 0000000000 ⑬ not used
- 2600488002 ⑭ Paul U. and Betty A. Garber
OR.176-2489 11/29/2004
0.746 ac p.19-257
- 2600677000 ⑮ Jonas Miller, Jr.
OR.191-2129 9/12/2006
1.642 ac p.12-145
- 2600119000 ⑯ Glenn R. and Ina A. Mast
OR.204-801 4/29/2008
1.856 ac p.6-63
- 2600577000 ⑰ Firman P. and Elsie E. Garber
260-948 8/2/1993
1.77 ac p.14-264
- 2600119001 ⑱ Conrad A. and Jane L. Mast
OR.205-2818 7/18/2008
0.133 ac p.19-1344
- 2600879001 ⑲ Merie R. and Naomi E. Beachy
OR.206-1020 8/20/2008
0.254 ac p.19-1360



T9, R5, 1st Qtr. Lot 1 WC-17

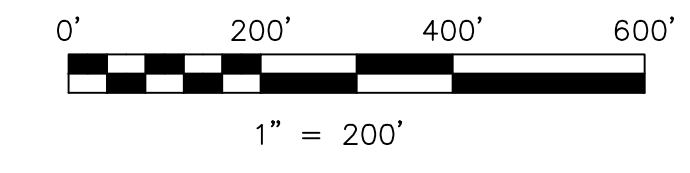
T9, R5, 1st Qtr. Lot 6 WC-17

T9, R4, Sec. 6 WC-22

T9, R4, Sec. 4 WC-29

HSN Subdivision
Plat 2-399 Platted 7/12/2005

2600678002 Harold J. and Tilla Sue Neuwchwander
OR.183-908 9/15/2005
3.517 ac p.2-399



LET IT BE KNOWN, THIS MAP HAS BEEN PREPARED AS A REFERENCE GUIDE TO PROPERTY OWNERSHIP. WE BELIEVE THIS INFORMATION TO BE CORRECT AND CURRENT, HOWEVER IT IS NOT INTENDED FOR ANY LEGAL USE, WHETHER IT BE IN SALES, TRANSFERS, TRUSTS, LEASES OF ANY TYPE, ETC., AND DO NOT ACCEPT RESPONSIBILITY FOR ERRORS OF ANY NATURE OR OMISSIONS CONTAINED HEREIN.

new survey required for next transfer

Last Revision: 9/30/2009
T-9, R-4, Sec.5
Walnut Creek Twp.
Holmes County, Ohio

WC-23