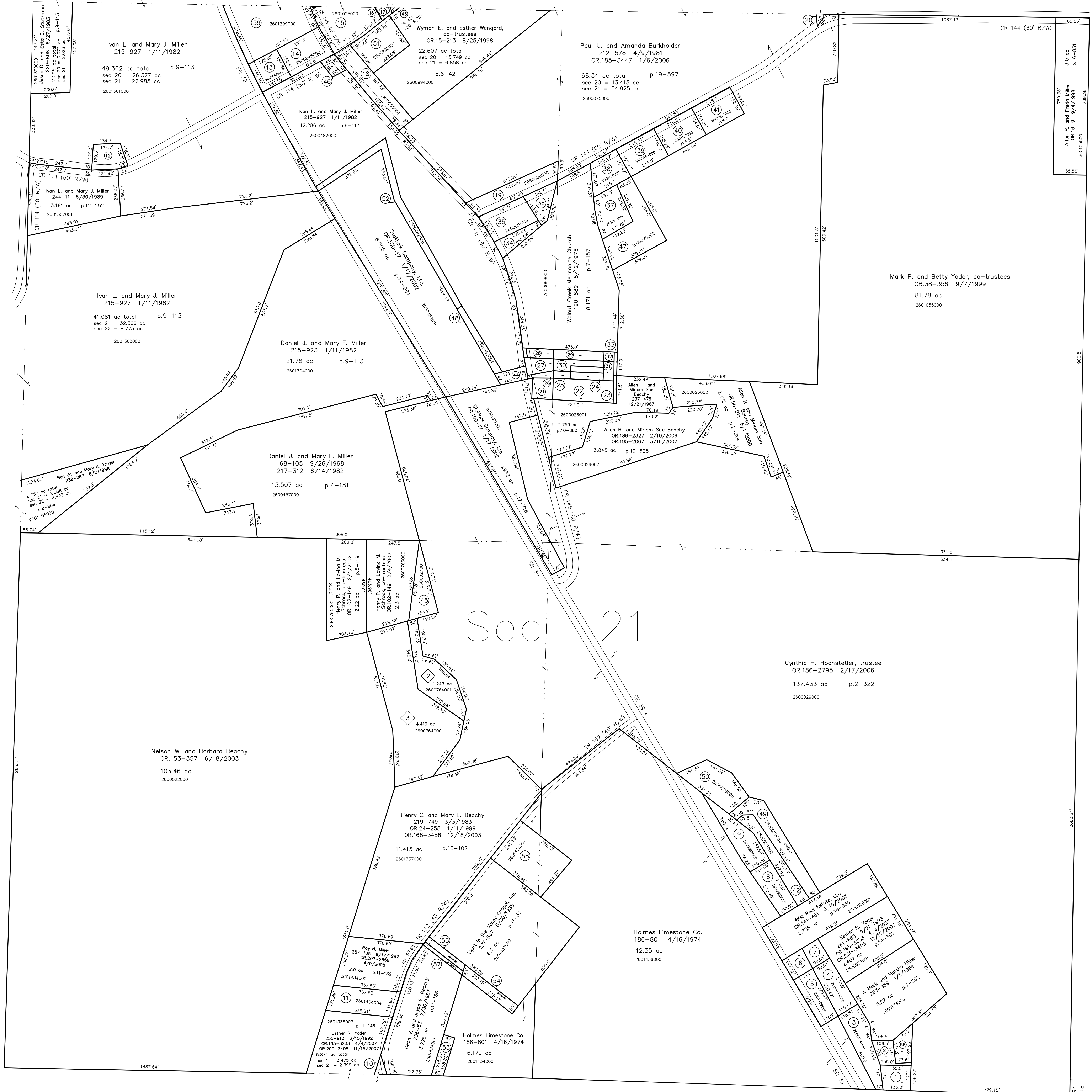


- 2600410000 1 Twila H. and Ruby H. Beachy
OR.53-398 8/8/2000
0.412 ac
- 2600129000 2 Twila H. and Ruby H. Beachy
OR.53-398 8/8/2000
0.288 ac
- 2600174000 3 J. Mark and Martha Miller
263-959 4/9/1994
0.856 ac p.5-191
- 2600039000 4 Esther R. Yoder
263-410 11/20/1986
OR.205-3405 11/15/2007
0.47 ac p.8
- 2601409000 5 Esther R. Yoder
233-410 11/20/1986
OR.195-3233 4/4/2007
OR.205-3405 11/15/2007
0.6605 ac p.10-325
- 2601410000 6 Esther R. Yoder
233-410 11/20/1986
OR.195-3233 4/4/2007
OR.205-3405 11/15/2007
0.3015 ac p.10-325
- 2600038000 7 Esther R. Yoder
233-410 11/20/1986
OR.195-3233 4/4/2007
OR.205-3405 11/15/2007
0.251 ac p.6-1
- 2600598000 8 Daniel L. and Edna A. Hostetter
256-619 8/6/1992
0.67 ac p.6-1
- 2600597000 9 Daniel L. and Edna A. Hostetter
256-619 8/6/1992
0.853 ac p.6-1
- 2600338000 10 Ralph L. and Brenda K. King
188-142 5/9/1977
233-973 8/5/1989
0.352 ac p.7-812
- 2601434004 11 Roy N. Miller
257-105 9/17/1992
OR.203-3854 4/9/2008
1.0 ac p.14-40
- 2601302000 12 Ivan L. and Mary J. Miller
OR.16-11 9/4/1998
0.464 ac p.9-113
- 2600847000 13 Adrian S. and Amanda E. Wengard
220-819 6/28/1983
0.643 ac
- 2600848000 14 Adrian S. and Amanda E. Wengard
220-819 6/28/1983
0.78 ac p.3-8
- 2601025000 15 Marvin W. and Miriam Wengard
265-581 8/17/1994
1.18 ac p.11-191
- 2600900001 16 Marvin W. and Miriam Wengard
265-581 8/17/1994
0.002 ac p.11-191
- 2600900000 17 Walnut Hills, Inc.
OR.15-73 8/20/1998
0.067 ac p.2-288
- 2600995001 18 John R. and Annetta J. Weaver, co-trustees
78-419 4/17/1998
1.045 ac p.11-74
- 2600008000 19 Walnut Creek Mennonite Church
190-689 5/12/1975
0.799 ac p.7-187
- 2601054002 20 Carlisle Holdings, LLC
OR.197-2553 6/14/2007
0.032 ac p.19-987
- 2600001000 21 Walnut Creek Mennonite Church
190-689 5/12/1975
0.28 ac
- 2600001001 22 Walnut Creek Mennonite Church
190-689 5/12/1975
0.72 ac
- 2600001002 23 Walnut Creek Mennonite Church
190-689 5/12/1975
0.049 ac
- 2600001003 24 Walnut Creek Mennonite Church
190-689 5/12/1975
0.125 ac
- 2600001004 25 Walnut Creek Mennonite Church
190-689 5/12/1975
0.06 ac
- 2600001005 26 Walnut Creek Mennonite Church
190-689 5/12/1975
0.04 ac
- 2600001006 27 Walnut Creek Mennonite Church
190-689 5/12/1975
0.066 ac
- 2600001007 28 Walnut Creek Mennonite Church
190-689 5/12/1975
0.124 ac
- 2600001008 29 Walnut Creek Mennonite Church
190-689 5/12/1975
0.305 ac
- 2600001009 30 Walnut Creek Mennonite Church
190-689 5/12/1975
0.23 ac
- 2600001010 31 Walnut Creek Mennonite Church
190-689 5/12/1975
0.125 ac
- 2600001011 32 Walnut Creek Mennonite Church
190-689 5/12/1975
0.066 ac
- 2600001012 33 Walnut Creek Mennonite Church
190-689 5/12/1975
0.038 ac
- 2600001013 34 Walnut Creek Mennonite Church
190-689 5/12/1975
0.125 ac
- 2600001014 35 Walnut Creek Mennonite Church
190-689 5/12/1975
0.89 ac
- 2600001015 36 Walnut Creek Mennonite Church
190-689 5/12/1975
0.32 ac
- 2600075001 37 Marcus L. and Rebecca V. Wengard
OR.151-818 8/5/2003
0.746 ac p.12-225
- 2600103000 38 Marcus L. and Rebecca V. Wengard
OR.151-818 8/5/2003
0.653 ac p.8-383
- 2600654000 39 William Dennis and Nancy L. Marshall
280-83 9/24/1997
0.772 ac p.8-384
- 2600197000 40 Wayne D. and Shelly R. Troyer
235-598 6/17/1987
0.769 ac p.8-385
- 2600217000 41 Merlin and Irene Hershberger
205-43 2/27/1979
235-589 6/17/1987
0.766 ac p.3-386
- 2600029003 42 Daniel L. and Edna A. Hostetter
274-725 8/12/1996
0.734 ac p.16-186
- 2600994001 43 Marcus L. and Rebecca V. Wengard
OR.169-1076 1/7/2004
0.011 ac p.16-185
- 2600482002 44 StaMark Company, Ltd.
OR.100-17 1/17/2002
0.235 ac p.16-519
- 2600027001 45 Henry P. and Lovina M. Schrock, co-trustees
OR.102-149 2/4/2002
0.66 ac p.2-314
- 2600482003 46 The Board of Holmes County Commissioners
OR.97-724 12/27/2001
0.181 ac p.18-165
- 2600075002 47 Marcus L. and Rebecca V. Wengard
OR.151-818 8/5/2003
1.528 ac p.18-149
- 2600482004 48 StaMark Company, Ltd.
OR.100-17 1/17/2002
0.292 ac p.18-180
- 2600029004 49 Daniel L. and Edna Hostetter
OR.108-970 4/3/2002
1.074 ac p.18-251
- 2600029005 50 HR Beachy, LLC
OR.194-2865 2/8/2007
1.091 ac p.18-280
- 2600995003 51 Brian L. and Hannah O. Wengard
OR.176-1360 11/15/2004
0.986 ac p.19-245
- 2600482005 52 StaMark Company, Ltd.
OR.176-2762 12/2/2004
0.972 ac p.19-264
- 2601434007 53 Dean V. and Joyce E. Beachy
OR.183-1411 9/20/2005
0.274 ac p.19-502
- 2601434006 54 Light in the Valley Chapel, Inc.
OR.183-1408 9/20/2005
0.377 ac p.19-502
- 2601434005 55 Light in the Valley Chapel, Inc.
OR.183-1409 9/20/2005
0.173 ac p.19-502
- 2600029006 56 Twila and Ruby Beachy
OR.186-2324 2/10/2006
0.32 ac p.19-927
- 2601434008 57 Dean V. and Joyce E. Beachy
OR.186-2363 2/13/2006
0.101 ac p.19-929
- 2601436001 58 Light in the Valley Chapel, Inc.
OR.66-480 1/25/2001
1.79 ac p.17-772
- 2601299000 59 Dennis A. and Marilyn Kay Rober
251-870 6/21/1991
1.946 ac p.8-845

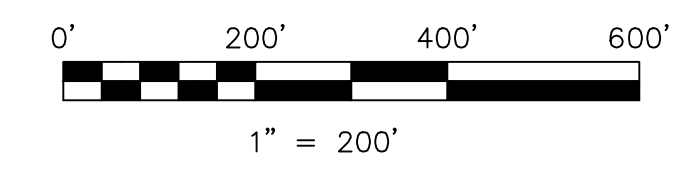
T9, R5, Sec. 22 WC-07



- 2600784001 Robert Michael and Sue D. Schrock
OR.107-807 3/21/2002
1.243 ac p.2-345
- 2600784000 David W. Beachy
OR.108-569 3/29/2002
4.419 ac p.2-345

T9, R4, Sec. 25 WC-19

T8, R4, Sec. 5 WC-16



LET IT BE KNOWN, THIS MAP HAS BEEN PREPARED AS A REFERENCE GUIDE TO PROPERTY OWNERSHIP. WE BELIEVE THIS INFORMATION TO BE CORRECT AND CURRENT. HOWEVER, IT IS NOT INTENDED FOR ANY LEGAL USE, WHETHER IT BE IN SALES, TRANSFERS, TRADES, LEASES OF ANY TYPE, ETC., AND DO NOT ACCEPT RESPONSIBILITY FOR ERRORS OF ANY NATURE OR OMISSIONS CONTAINED HEREIN.

new survey required for next transfer

Last Revision: 4/15/2008

**T-9, R-5, Sec.21
Walnut Creek Twp.
Holmes County, Ohio**

WC-13