

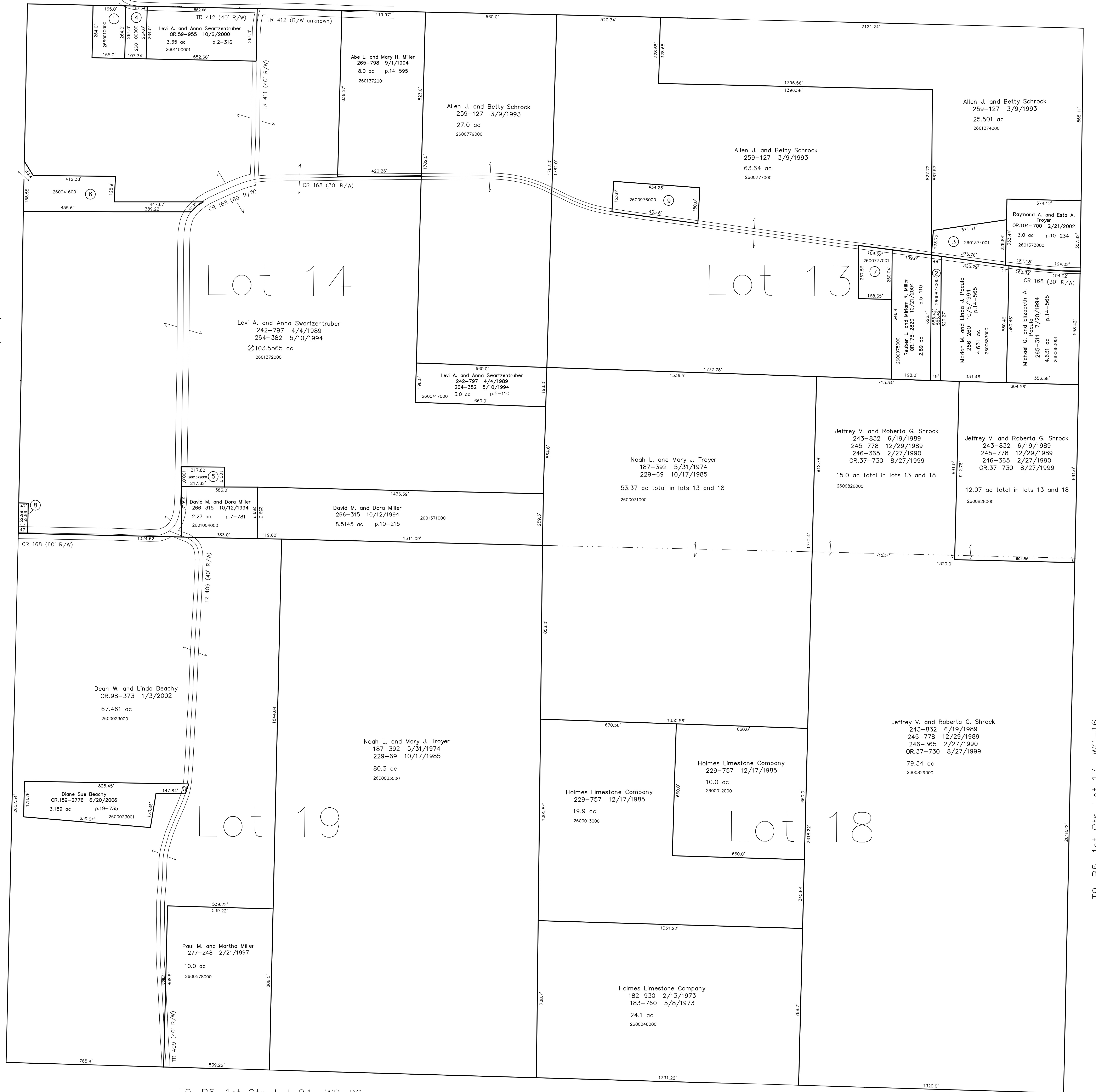
- 266010000 ① Trustees of Weaver's School  
OR.60-262 10/11/2000  
1.0 ac
- 2600827000 ② Jeffrey V. and Roberto G. Shrock  
243-832 6/19/1989  
245-778 12/29/1989  
246-365 2/27/1990  
0.66 ac
- 2601374001 ③ Amish Helping Fund  
272-741 3/25/1996  
1.498 ac p.14-839
- 2601100000 ④ Weavers Amish Parochial School  
OR.60-264 10/11/2000  
0.651 ac p.2-316
- 2601372000 ⑤ David M. and Dora Miller  
OR.113-486 5/23/2002  
0.5 ac p.18-395
- 2600416001 ⑥ Ailee L. and Alena W. Swartzentruber  
OR.154-208 6/24/2003  
OR.168-1034 11/18/2003  
2.391 ac p.18-654
- 2600777001 ⑦ Roy J. and Fannie Weaver  
OR.171-3477 5/5/2004  
1.0 ac p.19-61
- 2601372003 ⑧ Firman M. and Ruth Ann Miller, trustees  
OR.174-2427 8/23/2004  
0.168 ac p.19-164
- 2600976000 ⑨ Ella Schrock, trustee  
OR.195-1497 3/6/2007  
1.66 ac p.5-110

T9, R5, 1st Qtr. Lot 9 WC-11

T9, R5, 1st Qtr. Lot 8 WC-11

T9, R5, 1st Qtr. Lot 15 WC-05

T9, R5, 1st Qtr. Lot 20 WC-05



T9, R5, 1st Qtr. Lot 24 WC-09

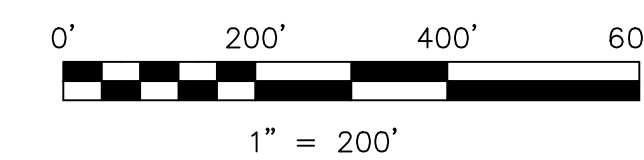
T9, R5, 1st Qtr. Lot 23 WC-09

T9, R5, 1st Qtr. Lot 12 WC-16

T9, R5, 1st Qtr. Lot 17 WC-16

Last Revision: 3/8/2007

**T-9, R-5, 1st. Qtr.  
Lots 13,14,18,19  
Walnut Creek Twp.  
Holmes County, Ohio**



LET IT BE KNOWN, THIS MAP HAS BEEN PREPARED AS A REFERENCE GUIDE TO PROPERTY OWNERSHIP. WE BELIEVE THIS INFORMATION TO BE CORRECT AND CURRENT. HOWEVER, IT IS NOT INTENDED FOR ANY LEGAL USE, WHETHER IT BE IN SALES, TRANSFERS, TRADES, LEASES OF ANY TYPE, ETC. AND DO NOT ACCEPT RESPONSIBILITY FOR ERRORS OF ANY NATURE OR OMISSIONS CONTAINED HEREIN.

new survey required  
for next transfer

**WC-10**