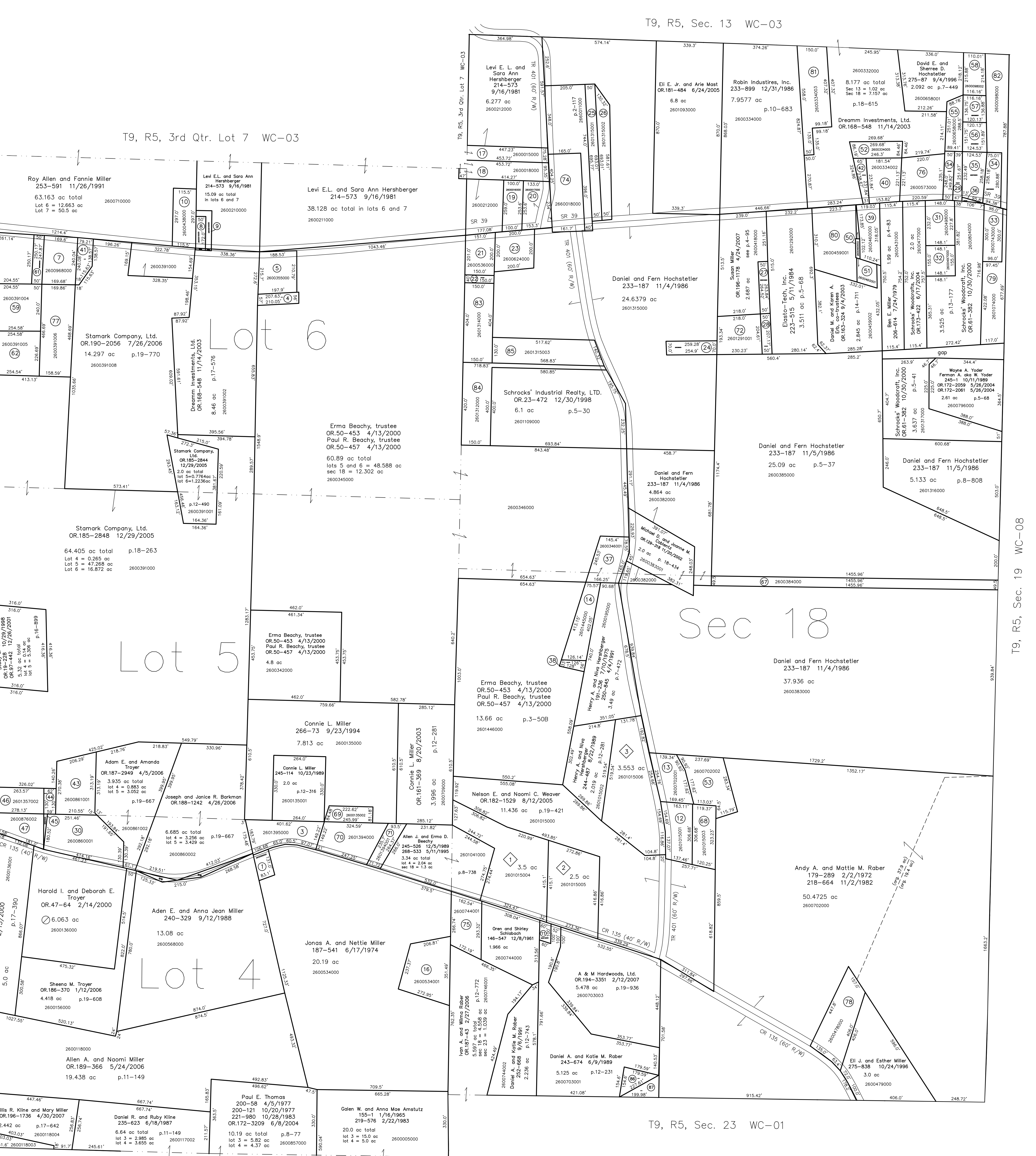
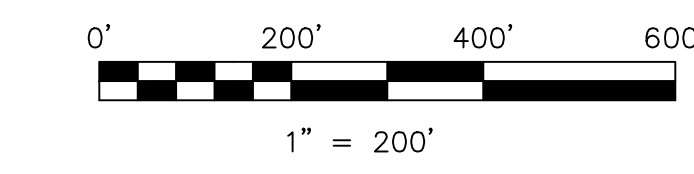


- 2600569000 ① Aden E. and Anna Jean Miller
240-329 9/12/1988
0.23 ac
- 2601356000 ② Marvin M. and Linda M. Erb
OR.53-549 6/12/2000
0.3081 ac p.10-185
- 2601395000 ③ Connie L. Miller
231-409 8/10/1986
1.154 ac p.10-286
- 2600356000 ④ Edward A. and Adah Kline
202-428 6/27/1978
220-25 4/13/1983
0.272 ac p.8-230
- 2600355000 ⑤ Edward A. and Adah Kline
188-513 12/31/1974
220-25 4/13/1983
0.94 ac p.7-378
- 2600875000 ⑥ David D. and Anna Troyer
185-475 11/6/1973
0.87 ac p.7-150
- 2600980000 ⑦ Moses M. and Carol Ann Weaver
269-133 6/26/1995
0.6497 ac p.14-527
- 2600515000 ⑧ Henry R. and Luella F. Miller
277-294 2/26/1997
0.196 ac p.5-60
- 2600516000 ⑨ Henry R. and Luella F. Miller
277-294 2/26/1997
0.174 ac p.8-796
- 2600438000 ⑩ Betty R. Miller
21-26 5/19/1981
0.287 ac
- 2600745000 ⑪ Oren and Shirley Schlabach
148-547 12/8/1961
0.14 ac
- 2601015001 ⑫ Jacob and Marie Miller, co-trustees
OR.160-644 8/4/2003
0.976 ac p.12-179
- 2600702001 ⑬ Jacob and Marie Miller, co-trustees
OR.160-644 8/4/2003
0.9105 ac p.10-825
- 2601445000 ⑭ Henry A. and Niva Hershberger
228-281 7/17/1985
0.919 ac p.10-442
- 2600118005 ⑮ Marlon W. and Mary Beth Burkholder
OR.189-498 5/25/2006
0.31 ac p.18-444
- 2600534001 ⑯ Leroy J. and Ruby A. Miller
OR.50-299 4/11/2000
1.56 ac p.17-460
- 2600015000 ⑰ Alvin J. and Maudie Beachy, co-trustees
OR.168-2475 12/8/2003
0.776 ac total p.7-704
(0.694 ac Sec. 18; 0.082 ac Lot 7)
- 2600018000 ⑱ Alvin J. and Maudie Beachy, co-trustees
OR.168-2475 12/8/2003
0.988 ac total p.7-704
(0.104 ac Lot 6 and 7; 0.894 ac Sec. 18)
- 2600016000 ⑲ Alvin J. and Maudie Beachy, co-trustees
OR.168-2475 12/8/2003
0.571 ac p.5-8
- 2600017000 ⑳ Alvin J. and Maudie Beachy, co-trustees
OR.168-2475 12/8/2003
0.504 ac p.3-8
- 2600536000 ㉑ Jonas A. and Nettie Miller
159-173 7/23/1966
263-59 1/7/1994
0.72 ac p.4-104
- 2600535000 ㉒ Jonas A. and Nettie Miller
168-278 10/19/1968
263-59 1/7/1994
0.14 ac p.14-182
- 2600624000 ㉓ Roman B. and Ada Miller
166-559 5/27/1968
260-18 5/21/1993
0.91 ac p.4-168
- 2600385001 ㉔ Susan Miller
OR.196-1178 4/24/2007
0.413 ac p.12-388
- 2601315001 ㉕ East Holmes Board of Education
235-205 4/20/1987
0.7971 ac p.10-741
- 2601315002 ㉖ East Holmes Board of Education
240-368 9/14/1988
0.69 ac p.12-48
- 2600418001 ㉗ Elasto-Tech, Inc.
243-773 6/14/1989
0.303 ac p.12-237
- 2601291000 ㉘ Elasto-Tech, Inc.
223-515 5/11/1984
223-827 6/7/1984
0.236 ac p.10-10
- 2600768000 ㉙ Hosao Paul and Bernice Renee Troyer
258-213 12/16/1992
0.254 ac p.7-509
- 2600860001 ㉚ Harold I. and Deborah E. Troyer
265-190 7/12/1994
1.619 ac p.14-501
- 2600498000 ㉛ Paul Jr. and Bertha R. Kaufman
OR.136-439 1/24/2003
0.781 ac p.4-62
- 2600497000 ㉜ Paul Jr. and Bertha R. Kaufman
OR.136-439 1/24/2003
0.52 ac p.8-442
- 2600743000 ㉝ Ferman W. Yoder
222-315 12/9/1983
0.66 ac
- 2600769000 ㉞ Iwn S. and Erma Schrock
138-1 6/9/1980
258-218 12/16/1992
0.516 ac p.13-177
- 2600769001 ㉟ Hosao Paul and Bernice Renee Troyer
258-213 12/16/1992
0.649 ac p.13-177
- 2600804003 ㊱ Hosao Paul and Bernice Renee Troyer
258-213 12/16/1992
0.025 ac p.13-177
- 2600346001 ㊲ Henry A. and Niva Hershberger
250-840 4/4/1991
0.958 ac p.12-533
- 2601446001 ㊳ Henry A. and Niva Hershberger
263-540 4/4/1991
0.131 ac p.12-633
- 2600460000 ㊴ Marvin and Leona Miller
OR.152-806 8/3/2003
0.741 ac p.18-644
- 2600334002 ㊵ Dream Investments, Ltd.
OR.168-548 11/4/2003
0.868 ac p.12-816
- 2600391007 ㊶ Moses M. and Carol Ann Weaver
OR.110-454 4/19/2002
0.368 ac p.18-263
- 2600334004 ㊷ Dream Investments, Ltd.
OR.168-548 11/4/2003
0.258 ac p.14-55
- 2600861001 ㊸ Harold I. and Deborah E. Troyer
265-190 7/12/1994
1.36 ac p.14-551
- 2601357001 ㊹ Harold I. and Deborah Troyer
254-351 1/31/1992
as excepted on 265-193
0.183 ac p.14-551
- 2600876000 ㊺ Harold I. and Deborah Troyer
228-843 4/9/1984
0.039 ac p.14-551
- 2600357002 ㊻ David E. Troyer
265-193 7/12/1994
0.808 ac p.12-851
- 2600876002 ㊼ David E. Troyer
265-193 7/12/1994
0.9327 ac p.3-59 B
- 2600873000 ㊽ Clarence W. and Mildred N. Troyer
120-516 5/13/1948
218-452 10/7/1982
OR.48-593 3/13/2000
0.666 ac
- 2600873001 ㊾ Randall E. and Robin K. Troyer
267-64 12/29/1994
0.334 ac p.14-976
- 2600460002 ㊿ Daniel M. and Karen A. Erb, trustees
OR.200-3068 11/9/2007
0.049 ac p.14-711
- 2600460001 ㊿ Daniel M. and Karen A. Erb, trustees
OR.200-3068 11/9/2007
0.314 ac p.4-96
- 2600334005 ㊿ Dream Investments, Ltd.
OR.168-548 11/4/2003
0.5 ac p.14-854
- 2600702002 ㊿ Jacob and Marie Miller, co-trustees
OR.160-646 8/4/2003
1.342 ac p.14-927
- 2600768001 ㊿ Daniel J. and Barbara Mullet
275-85 9/4/1996
0.286 ac p.16-217
- 2600585000 ㊿ Daniel J. and Barbara Mullet
190-718 5/3/1975
275-610 10/8/1996
0.528 ac p.16-217
- 2600098003 ㊿ Hosao Paul and Bernice Renee Troyer
275-85 9/4/1996
0.426 ac p.16-217
- 2600098001 ㊿ Daniel J. and Barbara Mullet
275-81 9/4/1996
275-610 10/8/1996
0.371 ac p.16-217
- 2600098002 ㊿ David E. and Sherree D. Hochstetler
275-81 9/4/1996
0.558 ac p.16-217
- 2600391004 ㊿ Randy C. and Mary Lee Wrick
OR.195-1719 3/12/2007
1.403 ac p.16-665
- 2601357003 ㊿ Marvin M. and Linda M. Erb
OR.53-549 6/12/2000
0.364 ac p.16-899

- 2601015004 ㊿ Leon L. Kuhns
OR.181-587 6/27/2005
3.5 ac p.19-410
- 2601015005 ㊿ Allen L. and Leroy E. Kuhns
OR.180-2446 6/7/2005
2.5 ac p.19-410
- 2601015006 ㊿ Dan J.A. and Clara Yoder
OR.180-2443 6/7/2005
3.553 ac p.19-410
- 2601394000 ㊿ Nathan L. and Ruth E. Martin
OR.61-596 7/18/2001
1.258 ac p.10-286
- 2601394001 ㊿ Connie L. Miller
OR.170-2333 3/16/2004
0.437 ac p.19-18
- 2601291001 ㊿ Susan Miller
OR.196-1178 4/24/2007
1.023 ac p.12-237
- 2600118001 ㊿ Marlon W. and Mary Beth Burkholder
OR.182-2764 8/24/2005
0.151 ac p.17-642
- 2600118002 ㊿ Marlon W. and Mary Beth Burkholder
OR.182-2764 8/24/2005
0.151 ac p.17-642
- 2600118003 ㊿ Willis R. Kline and Mary Miller
OR.186-1736 4/30/2007
0.541 ac p.17-642
- 2601357005 ㊿ Clarence W. and Mildred N. Troyer
275-81 9/4/1996
0.049 ac p.18-263
- 2600384000 ㊿ Daniel and Fern Hochstetler
233-187 11/4/1986
1.606 ac p.3-37
- 2601015003 ㊿ Jacob and Marie Miller, co-trustees
OR.168-1961 12/2/2003
0.808 ac p.18-263
- 2600135002 ㊿ Nathan L. and Ruth E. Martin
OR.170-2331 3/16/2004
0.437 ac p.19-18



- 2601394000 ㊿ Nathan L. and Ruth E. Martin
OR.61-596 7/18/2001
1.258 ac p.10-286
- 2601394001 ㊿ Connie L. Miller
OR.170-2333 3/16/2004
0.437 ac p.19-18
- 2601291001 ㊿ Susan Miller
OR.196-1178 4/24/2007
1.023 ac p.12-237
- 2600118001 ㊿ Marlon W. and Mary Beth Burkholder
OR.182-2764 8/24/2005
0.151 ac p.17-642
- 2600118002 ㊿ Marlon W. and Mary Beth Burkholder
OR.182-2764 8/24/2005
0.151 ac p.17-642
- 2600118003 ㊿ Willis R. Kline and Mary Miller
OR.186-1736 4/30/2007
0.541 ac p.17-642
- 2601357005 ㊿ Clarence W. and Mildred N. Troyer
275-81 9/4/1996
0.049 ac p.18-263
- 2600384000 ㊿ Daniel and Fern Hochstetler
233-187 11/4/1986
1.606 ac p.3-37
- 2601015003 ㊿ Jacob and Marie Miller, co-trustees
OR.168-1961 12/2/2003
0.808 ac p.18-263
- 2600135002 ㊿ Nathan L. and Ruth E. Martin
OR.170-2331 3/16/2004
0.437 ac p.19-18
- 2601074000 ㊿ Ferman W. and Amanda Yoder
269-550 4/13/1993
1.205 ac p.13-177
- 2600459001 ㊿ Daniel M. and Karen A. Erb, trustees
OR.200-3068 11/9/2007
1.691 ac p.4-95
- 2600334003 ㊿ Allen N. and Wilma I. Rober
OR.140-232 2/27/2003
1.577 ac p.12-943
- 2600098000 ㊿ Ruben R. and Esther Marie Troyer
275-409 9/20/1998
1.329 ac
- 260134000 ㊿ Jonas A. and Nettie Miller
214-842 10/13/1981
1.391 ac p.8-810
- 260132000 ㊿ Schrock's Industrial Realty, Ltd.
OR.23-472 12/30/1998
1.71 ac
- 260135003 ㊿ Schrock's Industrial Realty, Ltd.
OR.129-316 11/20/2002
1.621 ac p.18-433
- 260073002 ㊿ Daniel A. and Katie M. Rober
OR.194-3349 2/12/2007
0.318 ac p.19-536
- 260073000 ㊿ Andy A. and Mattie M. Rober
179-289 2/2/1972
218-664 11/2/1982
0.009 ac



LET IT BE KNOWN, THIS MAP HAS BEEN PREPARED AS A REFERENCE GUIDE TO PROPERTY OWNERSHIP. WE BELIEVE THIS INFORMATION TO BE CORRECT AND CURRENT. HOWEVER, IT IS NOT INTENDED FOR ANY LEGAL USE, WHETHER IT BE IN SALES, TRANSFERS, TRADES, LEASES OF ANY TYPE, ETC., AND DO NOT ACCEPT RESPONSIBILITY FOR ERRORS OF ANY NATURE OR OMISSIONS CONTAINED HEREIN.

new survey required for next transfer

Last Revision: 11/9/2007
T-9, R-5, Sec.18
3rd.Qtr. Lots 4,5,6
Walnut Creek Twp.
Holmes County, Ohio

WC-02