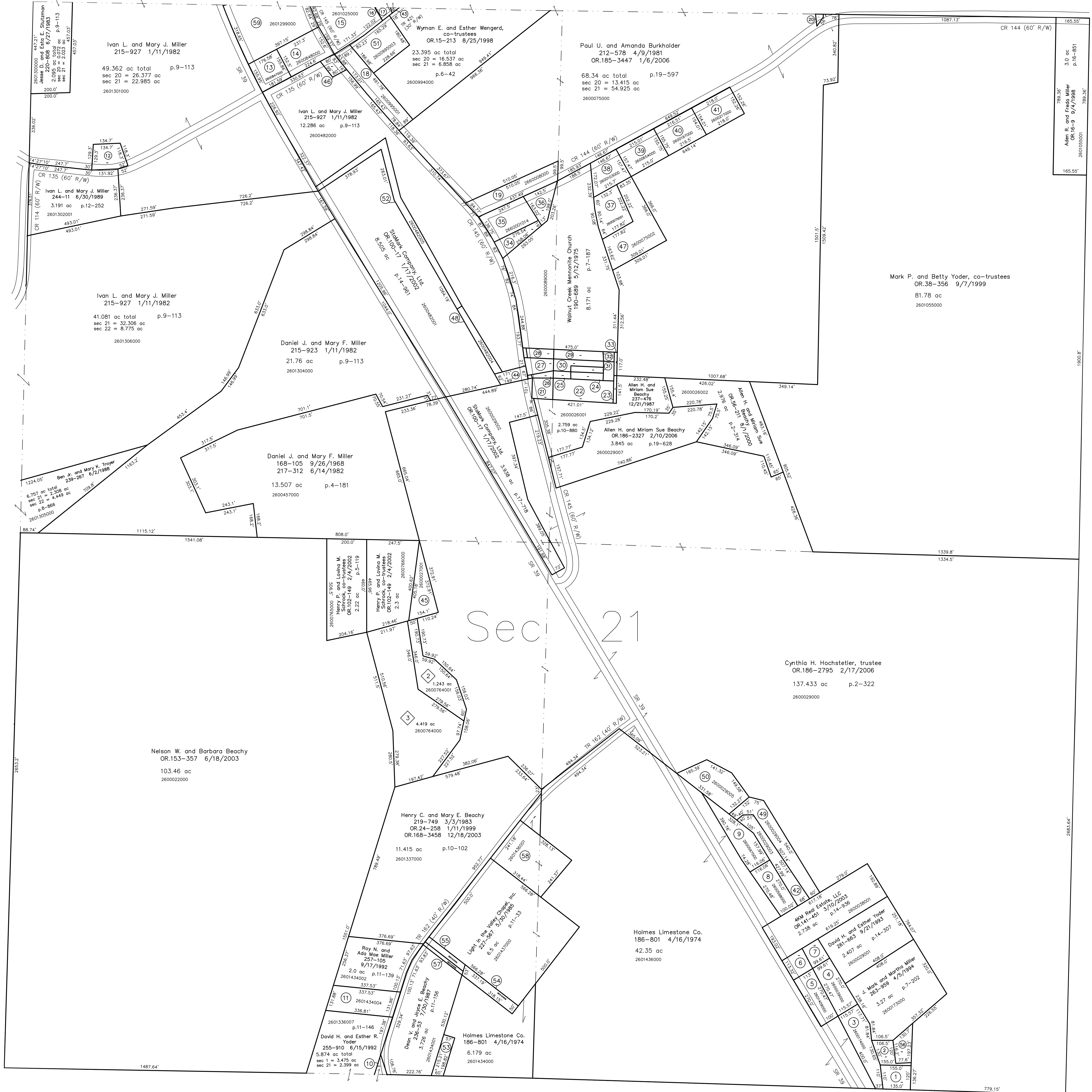


- 2600410000 ① Tilia H. and Ruby H. Beachy  
OR.53-398 8/8/2000  
0.412 ac
- 2600129000 ② Tilia H. and Ruby H. Beachy  
OR.53-398 8/8/2000  
0.288 ac
- 2600174000 ③ J. Mark and Martha Miller  
263-959 4/9/1994  
0.356 ac p.6-1
- 2600039000 ④ David H. and Esther R. Yoder  
233-410 11/20/1986  
0.67 ac p.6-1
- 2601409000 ⑤ David H. and Esther R. Yoder  
233-410 11/20/1986  
0.6605 ac p.10-325
- 2601410000 ⑥ David H. and Esther R. Yoder  
233-410 11/20/1986  
0.3015 ac p.10-325
- 2600038000 ⑦ David H. and Esther R. Yoder  
233-410 11/20/1986  
0.251 ac p.6-1
- 2600598000 ⑧ Daniel L. and Edna A. Hostetler  
256-619 8/6/1992  
0.87 ac p.6-1
- 2600597000 ⑨ Daniel L. and Edna A. Hostetler  
256-619 8/6/1992  
0.853 ac p.6-1
- 2600338000 ⑩ Ralph L. and Brenda K. King  
188-142 8/17/1977  
0.352 ac p.7-812
- 2601434004 ⑪ Roy N. and Ada Mae Miller  
257-105 9/17/1992  
1.0 ac p.14-40
- 2601302000 ⑫ Ivan L. and Mary J. Miller  
OR.16-11 9/4/1998  
0.464 ac p.9-113
- 2600847000 ⑬ Adrian S. and Amanda E. Wengert  
220-819 6/28/1983  
0.643 ac
- 2600848000 ⑭ Adrian S. and Amanda E. Wengert  
220-819 6/28/1983  
0.78 ac p.3-8
- 2601025000 ⑮ Marvin W. and Miriam Wengert  
265-581 8/17/1994  
1.18 ac p.11-191
- 2600900001 ⑯ Marvin W. and Miriam Wengert  
265-581 8/17/1994  
0.002 ac p.11-191
- 2600900000 ⑰ Walnut Hills, Inc.  
OR.15-75 8/20/1998  
0.067 ac p.2-288
- 2600995001 ⑱ John R. and Annetta J. Weaver, co-trustees  
OR.7-419 4/17/1998  
1.045 ac p.11-74
- 2600008000 ⑲ Walnut Creek Mennonite Church  
190-689 5/12/1975  
0.979 ac p.7-187
- 2601055002 ⑳ Mark P. and Betty Yoder, co-trustees  
OR.38-356 9/7/1999  
0.04 ac
- 2600001000 ㉑ Walnut Creek Mennonite Church  
190-689 5/12/1975  
0.28 ac
- 2600001001 ㉒ Walnut Creek Mennonite Church  
190-689 5/12/1975  
0.72 ac
- 2600001002 ㉓ Walnut Creek Mennonite Church  
190-689 5/12/1975  
0.049 ac
- 2600001003 ㉔ Walnut Creek Mennonite Church  
190-689 5/12/1975  
0.125 ac
- 2600001004 ㉕ Walnut Creek Mennonite Church  
190-689 5/12/1975  
0.06 ac
- 2600001005 ㉖ Walnut Creek Mennonite Church  
190-689 5/12/1975  
0.04 ac
- 2600001006 ㉗ Walnut Creek Mennonite Church  
190-689 5/12/1975  
0.27 ac
- 2600001007 ㉘ Walnut Creek Mennonite Church  
190-689 5/12/1975  
0.124 ac
- 2600001008 ㉙ Walnut Creek Mennonite Church  
190-689 5/12/1975  
0.305 ac
- 2600001009 ㉚ Walnut Creek Mennonite Church  
190-689 5/12/1975  
0.23 ac
- 2600001010 ㉛ Walnut Creek Mennonite Church  
190-689 5/12/1975  
0.125 ac
- 2600001011 ㉜ Walnut Creek Mennonite Church  
190-689 5/12/1975  
0.066 ac
- 2600001012 ㉝ Walnut Creek Mennonite Church  
190-689 5/12/1975  
0.038 ac
- 2600001013 ㉞ Walnut Creek Mennonite Church  
190-689 5/12/1975  
0.125 ac
- 2600001014 ㉟ Walnut Creek Mennonite Church  
190-689 5/12/1975  
0.89 ac
- 2600001015 ㊱ Walnut Creek Mennonite Church  
190-689 5/12/1975  
0.32 ac
- 2600075001 ㊲ Marcus L. and Rebecca V. Wengert  
OR.151-818 6/5/2003  
0.745 ac p.12-235
- 2600103000 ㊳ Marcus L. and Rebecca V. Wengert  
OR.151-818 6/5/2003  
0.655 ac p.8-383
- 2600654000 ㊴ William Dennis and Nancy L. Marshall  
280-83 9/24/1997  
0.772 ac p.8-384
- 2600197000 ㊵ Wayne D. and Shelly R. Troyer  
235-598 6/17/1987  
0.768 ac p.8-385
- 2600217000 ㊶ Merlin and Irene Hershberger  
205-43 2/27/1979  
235-589 6/17/1987  
0.766 ac p.3-386
- 2600029003 ㊷ Daniel L. and Edna A. Hostetler  
274-725 8/12/1996  
0.734 ac p.18-186
- 2600994001 ㊸ Marcus L. and Rebecca V. Wengert  
OR.169-1076 1/7/2004  
0.011 ac p.18-345
- 2600482002 ㊹ StaMark Company, Ltd.  
OR.100-17 1/17/2002  
0.235 ac p.18-519
- 2600027001 ㊺ Henry P. and Lovina M. Schrock, co-trustees  
OR.102-149 2/4/2002  
0.66 ac p.2-314
- 2600482003 ㊻ The Board of Holmes County Commissioners  
OR.97-724 12/27/2001  
0.181 ac p.18-165
- 2600075002 ㊼ Marcus L. and Rebecca V. Wengert  
OR.151-818 6/5/2003  
1.528 ac p.18-149
- 2600482004 ㊽ StaMark Company, Ltd.  
OR.100-17 1/17/2002  
0.292 ac p.19-264
- 2600029004 ㊾ Daniel L. and Edna Hostetler  
OR.108-970 4/3/2002  
1.074 ac p.18-251
- 2600029005 ㊿ Holmes Rental Station, Inc.  
OR.112-425 5/10/2002  
1.091 ac p.18-280
- 2600995003 ① Brian L. and Hannah O. Wengert  
OR.176-1360 11/15/2004  
0.986 ac p.19-245
- 2600482005 ② StaMark Company, Ltd.  
OR.176-2762 12/2/2004  
0.972 ac p.19-264
- 2601434007 ③ Dean V. and Joyce E. Beachy  
OR.183-1411 9/20/2005  
0.274 ac p.19-502
- 2601434006 ④ Light in the Valley Chapel, Inc.  
OR.183-1408 9/20/2005  
0.371 ac p.19-502
- 2601434005 ⑤ Light in the Valley Chapel, Inc.  
OR.183-1405 9/20/2005  
0.173 ac p.19-502
- 2600029006 ⑥ Tilia and Ruby Beachy  
OR.186-3324 2/10/2006  
0.32 ac p.19-627
- 2601434008 ⑦ Dean V. and Joyce E. Beachy  
OR.186-2363 2/13/2006  
0.101 ac p.19-629
- 2601436001 ⑧ Light in the Valley Chapel, Inc.  
OR.66-480 1/25/2001  
1.79 ac p.17-772
- 2601299000 ⑨ Dennis A. and Marilyn Kay Rober  
251-870 6/21/1991  
1.946 ac p.8-845

T9, R5, Sec. 22 WC-07

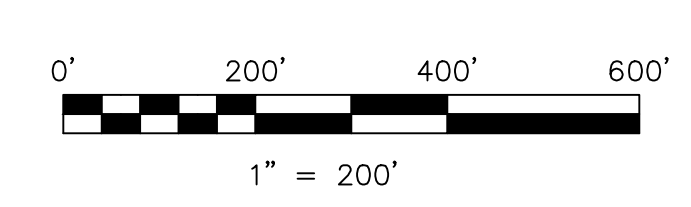


◆ Schrock Subdivision Replat of Lot 1  
Plat 2-345 Platted 3/6/2002

2600784001 ◆ Robert Michael and Sue D. Schrock  
OR.107-807 3/21/2002  
1.243 ac p.2-345

2600784000 ◆ David W. Beachy  
OR.108-569 3/29/2002  
4.419 ac p.2-345

T8, R5, Sec. 1 WC-12



LET IT BE KNOWN, THIS MAP HAS BEEN PREPARED AS A REFERENCE GUIDE TO PROPERTY OWNERSHIP. WE BELIEVE THIS INFORMATION TO BE CORRECT AND CURRENT. HOWEVER, IT IS NOT INTENDED FOR ANY LEGAL USE, WHETHER IT BE IN SALES, TRANSFERS, TRADES, LEASES OF ANY TYPE, ETC., AND DO NOT ACCEPT RESPONSIBILITY FOR ERRORS OF ANY NATURE OR OMISSIONS CONTAINED HEREIN.

new survey required  
for next transfer

Last Revision: 2/17/2006

**T-9, R-5, Sec.21  
Walnut Creek Twp.  
Holmes County, Ohio**

# WC-13

T9, R4, Sec. 25 WC-19