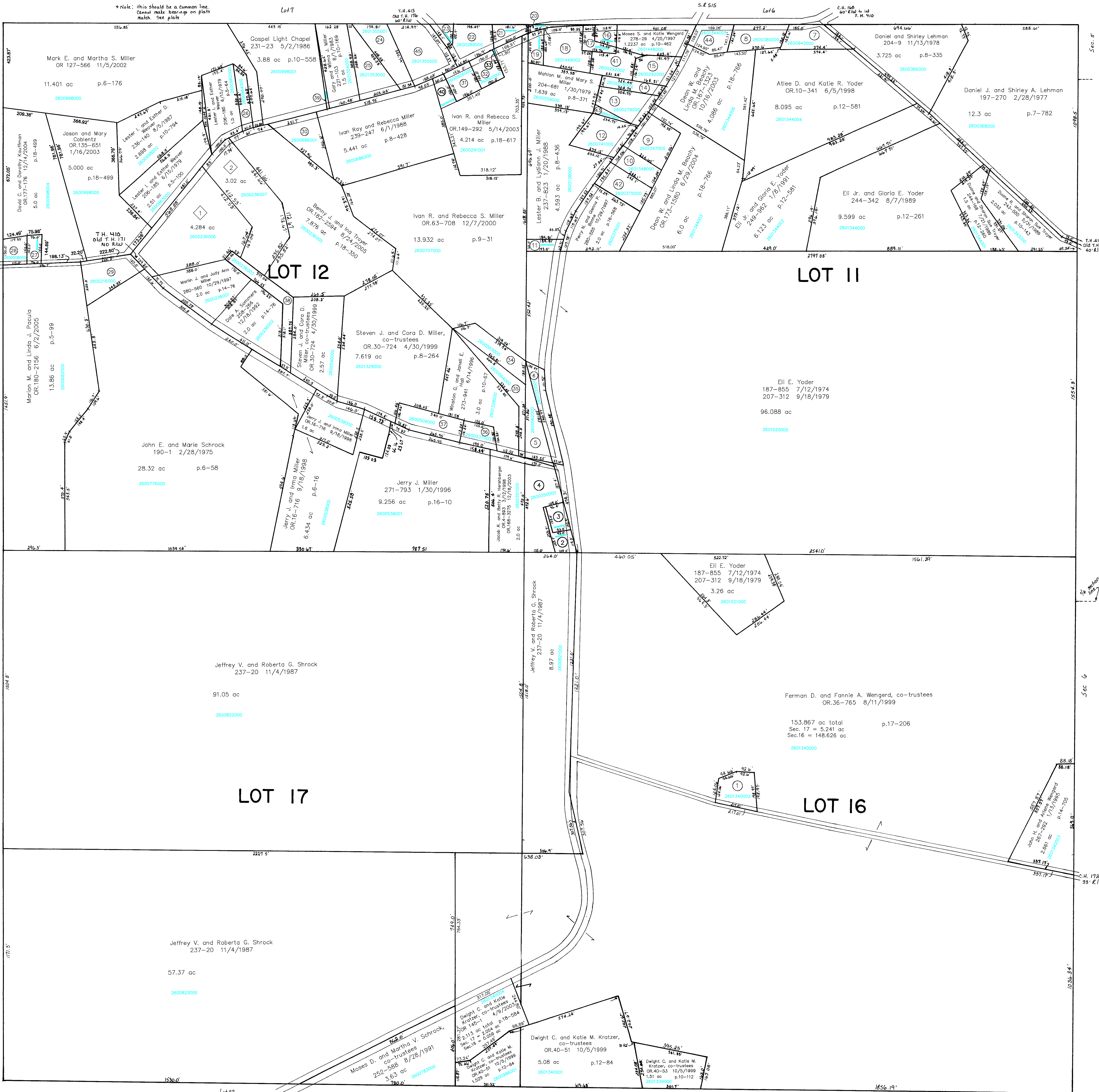


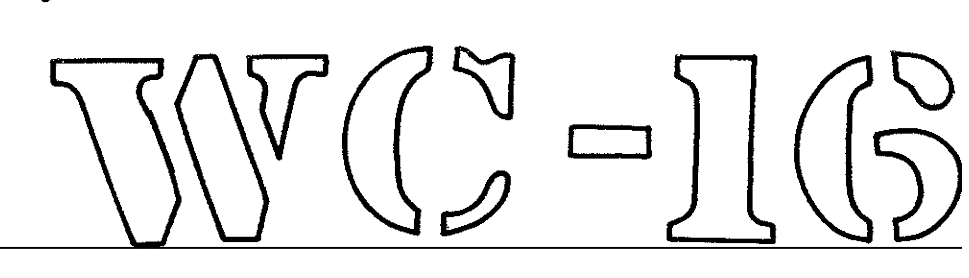
- 2601340002 ① WENGERD FERMAN D. AND FANNIE A. CO-TRUSTEES
OR.0036-768 8/11/1999
0.767 ac p.12-402
- 2600352000 ② HERSHBERGER JACOB R. AND BETTY J.
OR.0004-893 3/12/1998
OR.0168-3275 12/18/2003
0.293 ac p.4-48
- 2600353000 ③ HERSHBERGER JACOB R. AND BETTY J.
OR.0004-893 3/12/1998
OR.0168-3275 12/18/2003
0.309 ac p.3-22
- 2600350000 ④ HERSHBERGER JACOB R. AND BETTY J.
OR.0004-893 3/12/1998
OR.0168-3275 12/18/2003
1.716 ac p.4-48
- 2600562000 ⑤ MILLER WAYNE L. AND LINDA KAY
248-556 9/5/1990
0.8 ac
- 2601020001 ⑥ MILLER WAYNE L. AND LINDA KAY
253-139 10/16/1991
0.732 ac p.12-771
- 2600943000 ⑦ ZION UNITED CHURCH OF CHRIST
249-793 12/21/1990
0.75 ac p.3-28
- 2600380000 ⑧ MAST ABLE L. AND FRANCES A.
156-351 9/3/1965
0.77 ac
- 2601347000 ⑨ RABER ALVIN E. AND BETTY S.
AND DAVID A.
OR.0176-2968 12/6/2004
1.0 ac p.10-151
- 2601348000 ⑩ RABER ALVIN E. AND BETTY S.
OR.0011-154 6/22/1998
0.359 ac p.8-332
- 2600706000 ⑪ MILLER IVAN R. AND REBECCA S.
OR.0063-708 12/7/2000
0.249 ac p.9-31
- 2600741000 ⑫ SCHLABACH KENNETH L. AND
EDITH A. HELMUTH
206-272 6/25/1979
OR.0015-952 9/3/1998
1.0 ac p.8-415
- 2600279000 ⑬ HOSTETLER CRYSTAL MAE TRUSTEE
OR.0063-678 12/7/2000
0.898 ac p.8-415
- 2600278000 ⑭ HOSTETLER CRYSTAL MAE TRUSTEE
OR.0063-678 12/7/2000
0.361 ac p.8-397
- 2600292000 ⑮ WENGERD MOSES S. AND KATIE
CO-TRUSTEES
278-507 6/4/1997
0.635 ac p.6-438
- 2600809000 ⑯ WENGERD MOSES S. AND KATIE
OR.0163-460 9/25/2003
0.261 ac p.5-99
- 2600292001 ⑰ WENGERD MOSES S. AND KATIE
OR.0163-460 9/25/2003
0.287 ac p.10-583
- 2601449002 ⑱ MILLER MAHLON AND MARY S.
236-319 9/1/1987
1.074 ac p.11-159
- 2600558000 ⑲ MILLER MAHLON M. AND MARY S.
205-798 5/27/1976
237-717 1/7/1988
0.308 ac p.11-159
- 2601137000 ⑳ WAYNE-DALTON CORP.
200-840 1/17/1987
225-668 12/6/1984
225-669 12/6/1984
0.13 ac
- 2600287000 ㉑ HOSTETLER BETTY J.
151-75 9/13/1963
225-570 11/27/1984
0.37 ac p.4-4
- 2600289000 ㉒ HOSTETLER BETTY J.
151-75 9/13/1963
225-570 11/27/1984
0.84 ac p.8-252
- 2600965000 ㉓ HERSHBERGER RAYMOND L. AND ANNA
258-832 8/20/1992
0.2 ac p.7-821
- 2601355001 ㉔ ANDERSON NEIL S. AND DENISE L.
OR.0069-514 3/14/2001
1.0 ac p.12-385
- 2601353000 ㉕ MILLER GARY AND WILMA J.
221-103 8/1/1983
1.0 ac p.12-580
- 2600964000 ㉖ WEAVER LESTER I. AND ESTHER
206-185 6/15/1979
0.43 ac p.7-750
- 2600007000 ㉗ HUGHES JEAN M.
245-84 10/19/1989
0.24 ac p.7-173
- 2600080000 ㉘ HUGHES JEAN M.
245-84 10/19/1989
0.36 ac p.7-101
- 2600216000 ㉙ CHIPP AMOS M. AND ANGELA MAE
OR.0097-440 12/26/2001
1.03 ac p.6-58
- 2600866001 ㉚ RABER JR. AND JENNEY LOU
245-42 10/12/1989
1.0 ac p.12-315
- 2600926000 ㉛ TROYER ROBERT G. AND MADELINE
187-154 5/10/1974
187-630 6/24/1974
0.5 ac p.7-249
- 2600925000 ㉜ TROYER ROBERT G. AND MADELINE
195-567 9/13/1976
0.45 ac p.7-700
- 2600291000 ㉝ TROYER ROBERT G. AND MADELINE
221-874 10/19/1983
0.007 ac p.7-700
- 2600563000 ㉞ MILLER WAYNE L. AND LINDA KAY
248-556 9/5/1990
0.85 ac
- 2600564000 ㉟ MILLER WAYNE L. AND LINDA KAY
248-556 9/5/1990
0.81 ac p.8-311
- 2600537000 ㊱ MILLER STEVEN J. AND CORA D.
CO-TRUSTEES
OR.0054-778 7/5/2000
0.45 ac p.8-231
- 2600509000 ㊲ MILLER STEVEN J. AND CORA D.
CO-TRUSTEES
OR.0030-724 4/30/1999
0.9 ac p.5-89
- 2600236003 ㊳ SOMMERS DALE A.
258-266 12/18/1992
0.892 ac p.14-111
- 2600998003 ㊴ MILLER GARY AND WILMA J.
258-609 1/13/1993
0.063 ac p.14-132
- 2600924000 ㊵ TROYER ROBERT AND MADELINE
203-309 9/12/1978
0.259 ac p.8-290
- 2600292002 ㊶ WENGERD MOSES S. AND KATIE
278-29 4/25/1997
0.6703 ac p.14-639
- 2600375000 ㊷ RABER ALVIN E. AND BETTY S.
OR.0011-154 6/22/1998
0.785 ac p.8-333
- 2600279001 ㊸ SCHLABACH KENNETH L. AND EDITH A.
OR.0015-501 8/28/1998
0.102 ac p.18-840
- 2601344005 ㊹ SCHLABACH DAVID J.
OR.0170-1046 2/27/2004
0.612 ac p.18-766
- 2601355000 ㊺ Timothy J. and Renita J. Neinger
OR.1-288 1/6/1998
1.501 ac p.8-272



- ◆ Gobblers Knob Subdivision
Plot 18-349 Platted 8/9/2002
- 2600236006 ① HOSTETLER DAVID F. AND LOIS A.
OR.0122-291 9/9/2002
4.284 ac
- 2600236007 ② TROYER BENNY J. AND INA
OR.0122-294 9/9/2002
3.02 ac

T-9, R-5, 1st. qtr.
lots 11, 12, 16, 17
Walnut Creek Twp.
HOLMES COUNTY, OHIO

Last Revision: 8/24/2005



LET IT BE KNOWN, THIS MAP HAS BEEN PREPARED AS A REFERENCE GUIDE TO PROPERTY OWNERSHIP. WE BELIEVE THIS INFORMATION TO BE CORRECT AND CURRENT, HOWEVER, IT IS NOT INTENDED FOR ANY LEGAL USE, WHETHER IT BE IN SALES, TRANSFERS, TRADES, LEASES OF ANY TYPE, ETC., AND DO NOT ACCEPT RESPONSIBILITY FOR ERRORS OF ANY NATURE OR OMISSIONS CONTAINED HEREIN.