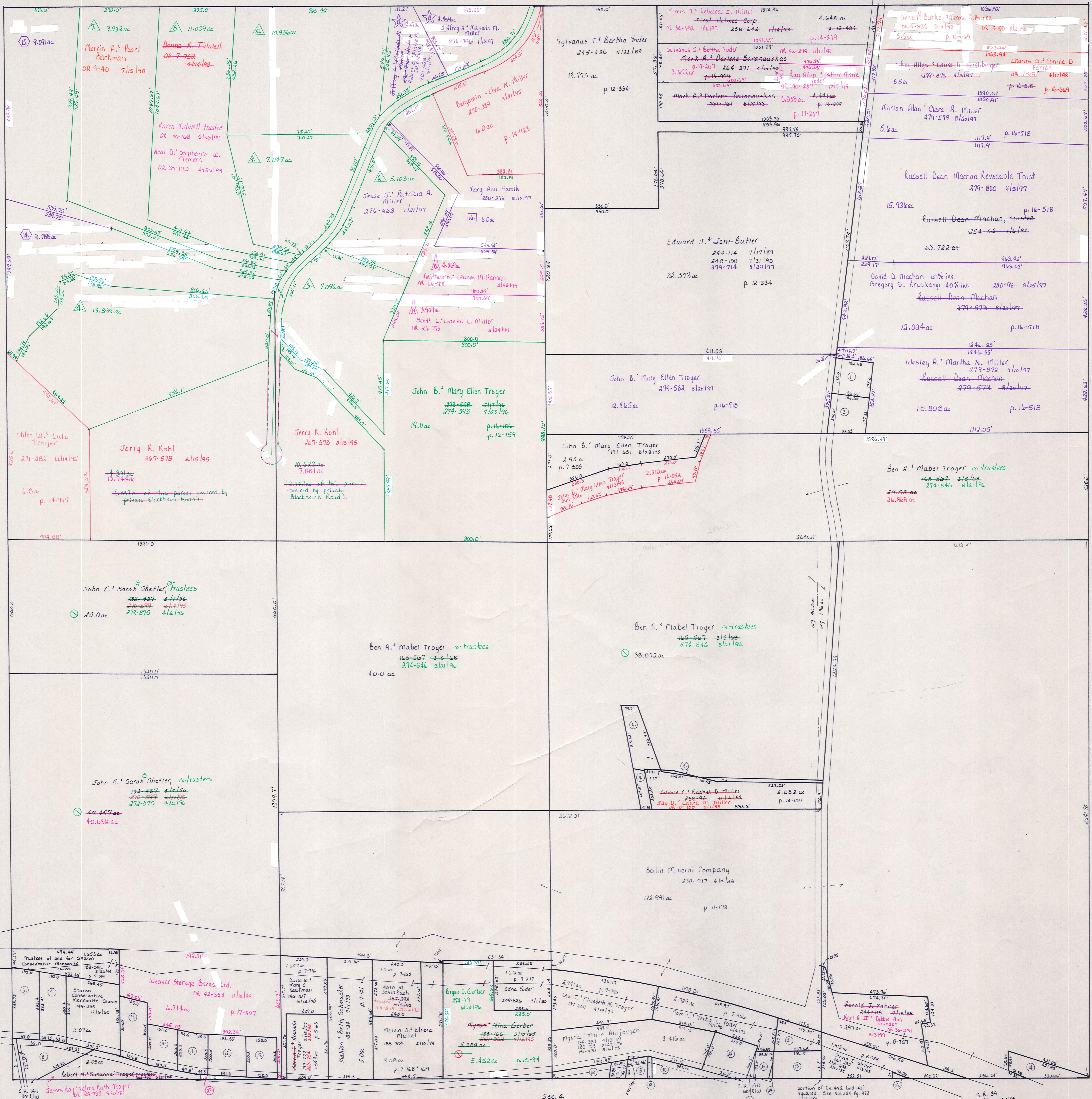


Serry K. Kohl  
 OK 42-815 11/20/99 3.299 ac  
 Blackhawk Road-private  
 p. 2-260 9/14/96 Sec. 17

T.H. 422  
 D18 T.H. 143  
 60' E.W.



- △ Blackhawk Subdivision No. 1  
 Plat 2-265 Platted 12/17/96
- ☆ Replat of Lot 11 in Blackhawk Subdivision No. 1  
 Plat 2-272 platted 8/24/97
- Replat of Lot 5 & Lot 6 in Blackhawk Subdivision No. 1  
 Plat 2-271 platted 8/25/97
- Replat of Lot 1 in Blackhawk Subdivision No. 1  
 Plat 2-274 Platted 11/10/97
- △ Blackhawk Subdivision No. 1, Replat of Lot 17  
 Plat 2-291 Platted 1/14/98

SCALE: 1" = 200'

LET IT BE KNOWN, THIS MAP HAS BEEN PREPARED AS A REFERENCE GUIDE TO PROPERTY OWNERSHIP. WE BELIEVE THIS INFORMATION TO BE CORRECT AND CURRENT, HOWEVER, IT IS NOT INTENDED FOR ANY LEGAL USE, WHETHER IT BE IN SALES, TRANSFERS, TRADES, LEASES OF ANY TYPE, ETC., AND DO NOT ACCEPT RESPONSIBILITY FOR ERRORS OF ANY NATURE OR OMISSIONS CONTAINED HEREIN.

T-9, R-4, Sec. 24  
 Walnut Creek Twp.  
 HOLMES COUNTY, OHIO

WC-25