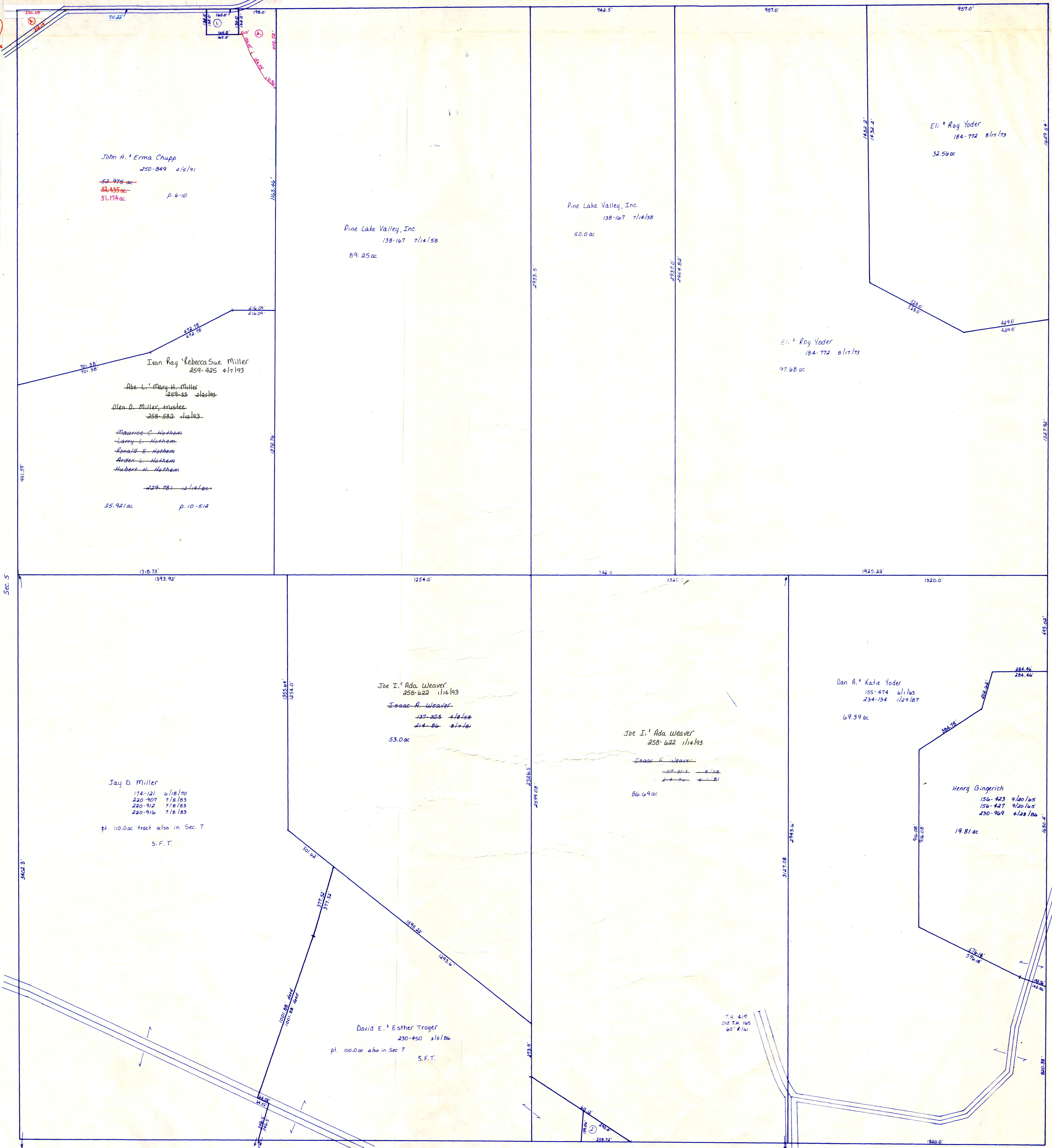
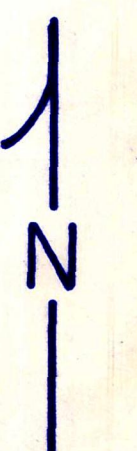


T.H. 410
Old T.H. 174
34' R/W
Relocated along
259-714



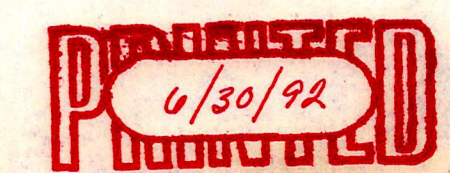
Tuscarawas County



SCALE - 1" = 200'

T-9, R-4, Sec. 4
Walnut Creek Twp.

HOLMES COUNTY, OHIO



WC-20

LET IT BE KNOWN, THIS MAP HAS BEEN PREPARED AS A REFERENCE GUIDE TO PROPERTY OWNERSHIP AND CURRENT. HOWEVER, IT IS NOT INTENDED FOR ANY LEGAL USE, WHETHER IT BE IN SALES, TRANSFERS, TRADES, LEASES OF ANY TYPE, ETC. AND DO NOT ACCEPT RESPONSIBILITY FOR ERRORS OF ANY NATURE OR OMISSIONS CONTAINED HEREIN.