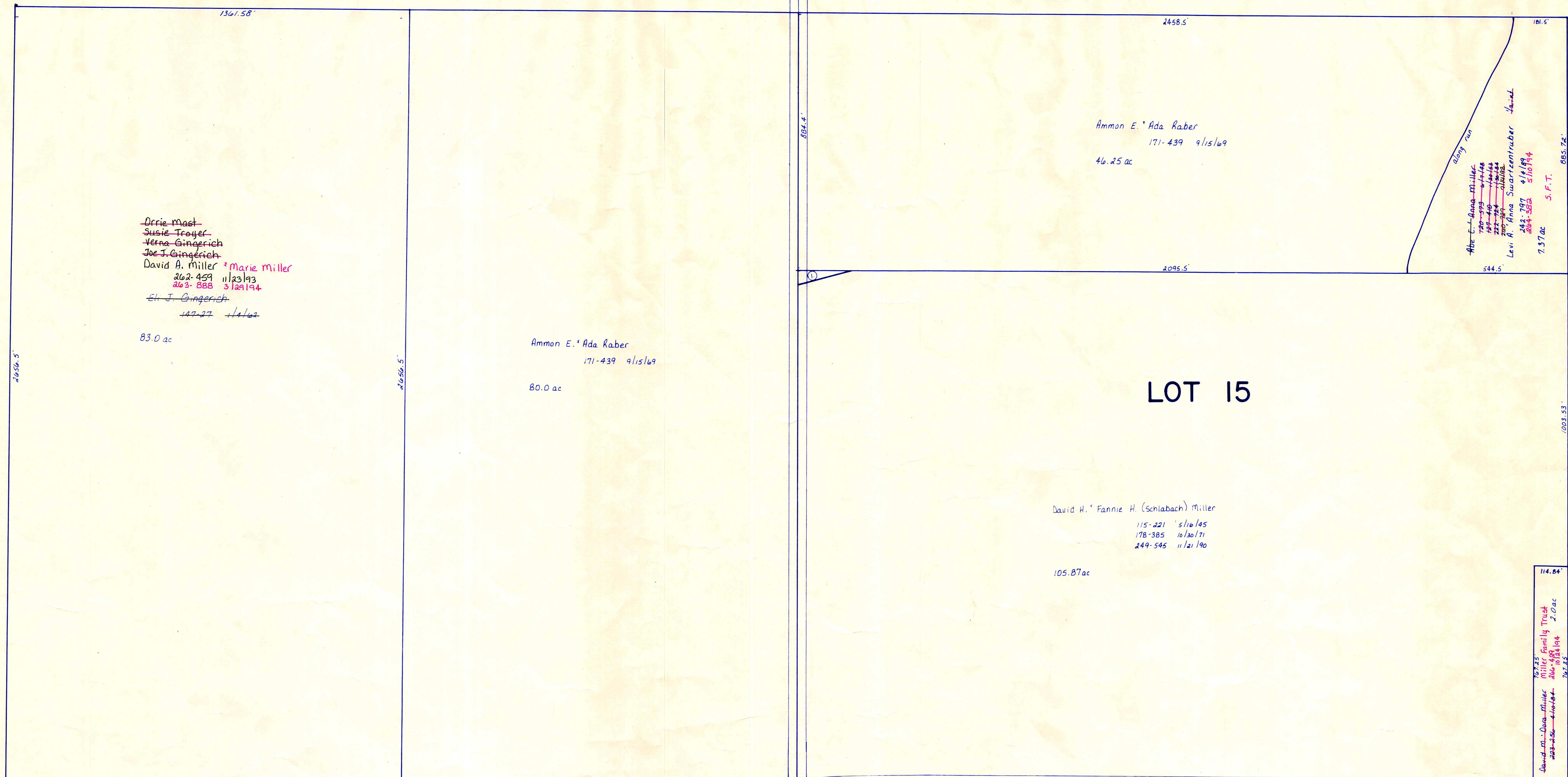


T.H. 401
Old T.H. 461
60' R/W

Sec. 3

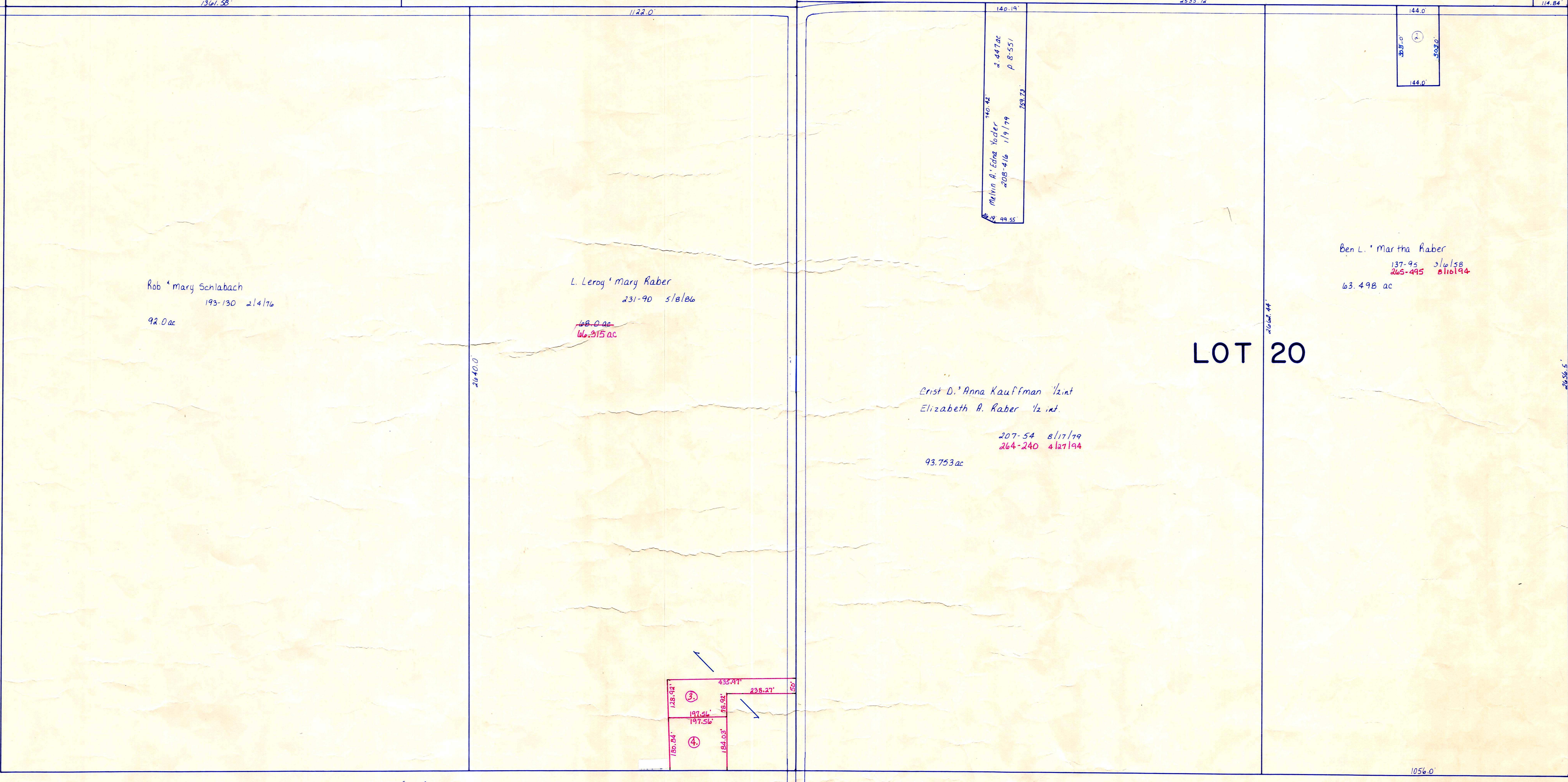
Lot 10



Berlin Township

C.H. 108
60' R/W

C.H. 108
60' R/W



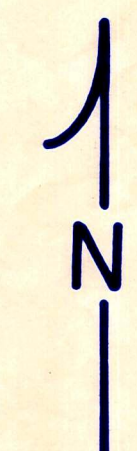
Sec. 13

Lot 25

- ① Ammon E. Ada Raber 171-439 9/15/69 .00 ac S.P.T.
- ② Erman M. Kath Ann Miller 184-486 11/6/73 1.00 ac P. 7-83

For numbered parcels see folder

T.H. 401
Old T.H. 461
60' R/W



SCALE: 1" = 200'

T-9, R-5, Sec. 8
1st. qtr. lots 15, 20
Walnut Creek Twp.
HOLMES COUNTY, OHIO

LET IT BE KNOWN, THIS MAP HAS BEEN PREPARED AS A REFERENCE GUIDE TO PROPERTY OWNERSHIP, AND CURRENT, HOWEVER, IT IS NOT INTENDED FOR ANY LEGAL USE, WHETHER IT BE IN SALES, TRANSFERS, TRADES, LEASES OF ANY TYPE, ETC., AND DO NOT ACCEPT RESPONSIBILITY FOR ERRORS OF ANY NATURE OR OMISSIONS CONTAINED HEREIN.

PRINTED 5/1/91 W.C. - 5