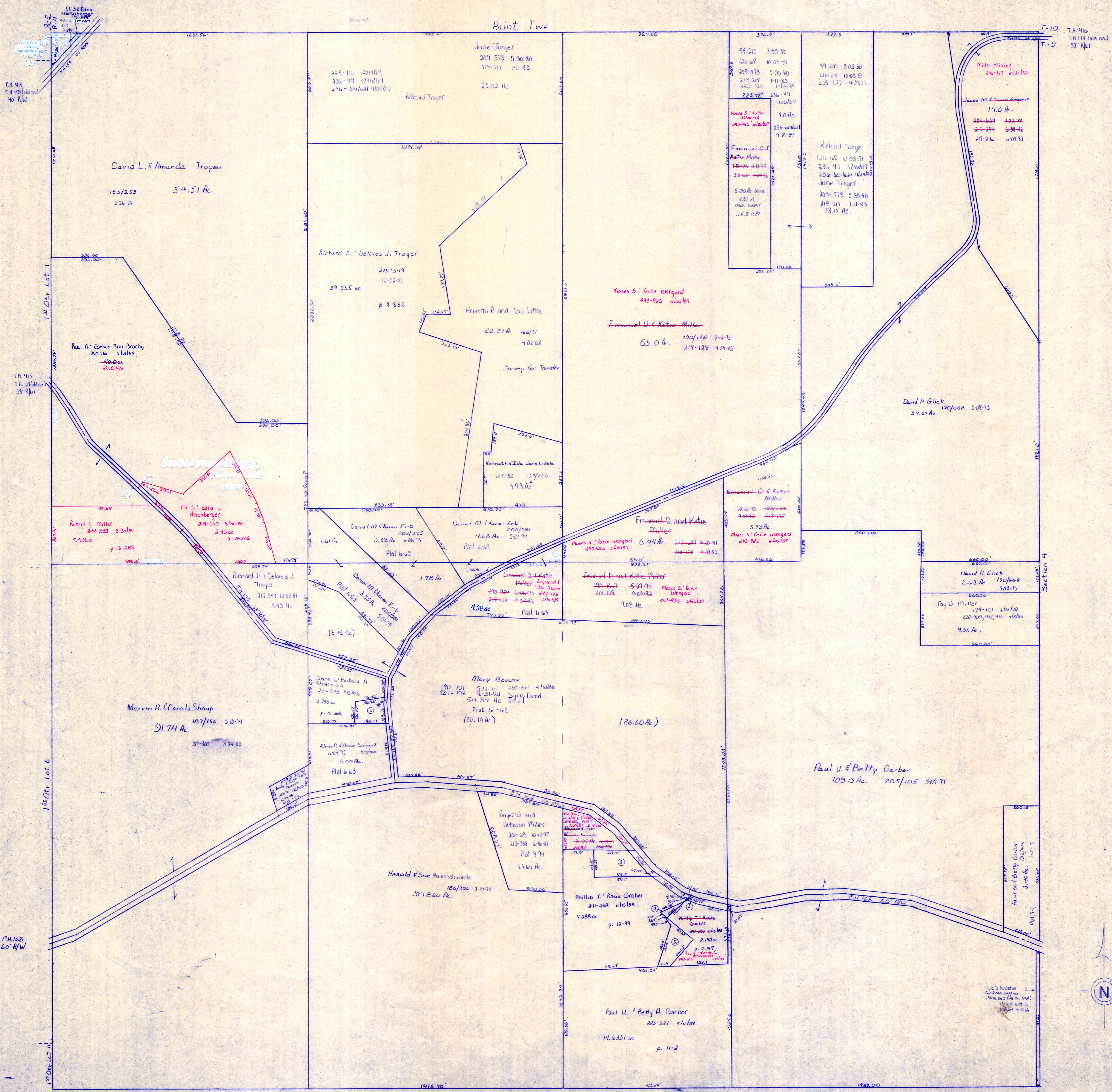


Paint Twp

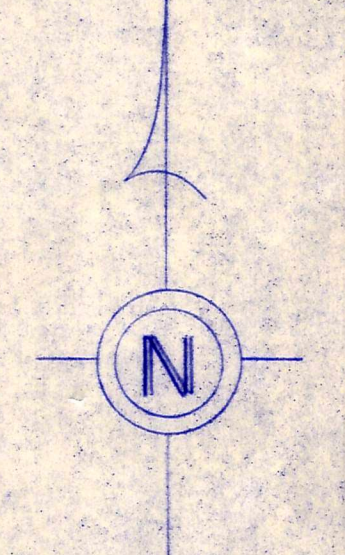
T-10 T.H. 416
T-9 T.H. 414 (old no.)
32' R/W



- ① Henry E. Lynn Barber 224-81 uls/14 .592ac p.10-268
- ② Phillip T. Rosie Graber 241-229 uls/18 1.0ac p.12-99
- ③ Eli S. & Edna I. Hershberger 225-229 uls/18
- ④ Phillip T. Rosie Graber 241-233 uls/18 .029ac p.12-99
- ⑤ Phillip T. Rosie Graber 241-233 uls/18 .063ac p.12-99
- ⑥ Phillip T. Rosie Graber 241-233 uls/18 .589ac p.12-99

LET IT BE KNOWN, THIS MAP HAS BEEN PREPARED AS A REFERENCE GUIDE TO PROPERTY OWNERSHIP. WE BELIEVE THIS INFORMATION TO BE CORRECT AND CURRENT, HOWEVER, IT IS NOT INTENDED FOR ANY LEGAL USE, WHETHER IT BE IN SALES, TRANSFERS, TRADES, LEASES OF ANY TYPE, ETC., AND DO NOT ACCEPT RESPONSIBILITY FOR ERRORS OF ANY NATURE OR OMISSIONS CONTAINED HEREIN.

T-9, R-4, Sec. 5
WALNUTCREEK TWP.
SCALE 1" = 200'



WC
23