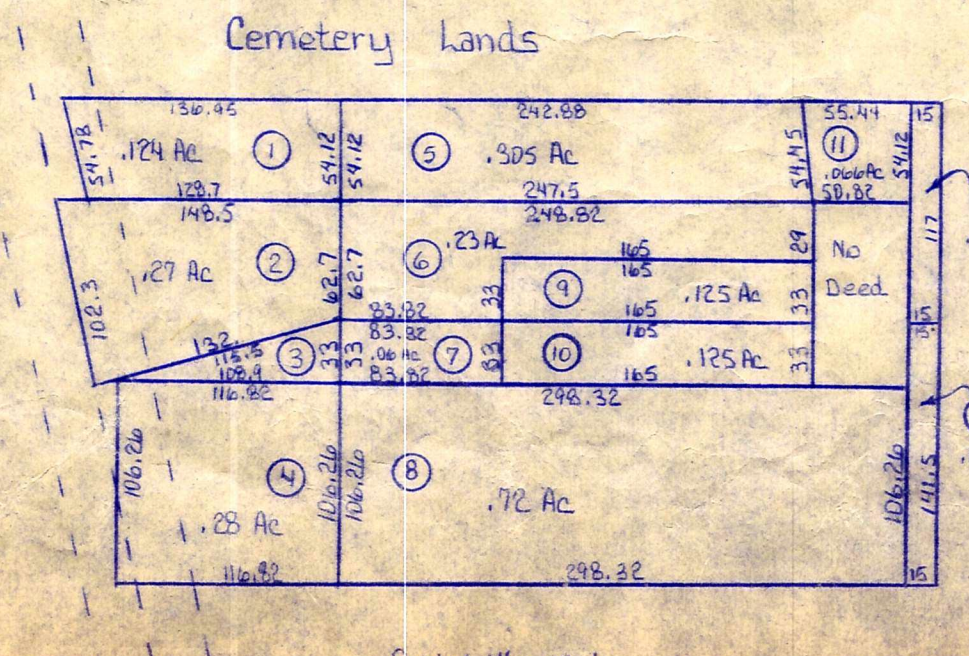


- 1. 9-29-24 96-310 .124 A.M. Church of Walnutcreek
- 2. 5-6-75 190-633 .227 Amish Meeting at Walnutcreek
- 3. 1-22-35 190-635 .04 Amish Meeting at Walnutcreek
- 4. 1-29-34 81-186 .28 Directors of Amish Meeting at W.C.
- 5. 9-29-36 96-310 .305 A.M. Church of Walnutcreek
- 6. 5-6-75 190-633 .225 Amish Meeting at Walnutcreek
- 7. 7-22-33 190-635 .06 Amish Meeting at Walnutcreek
- 8. 1-29-34 81-186 .72 Directors of Amish Meeting at W.C.
- 9. 5-27-36 30-443 .125 Trustees of Amish Church
- 10. 5-27-36 30-444 .125 Trustees of Amish Church
- 11. 7-29-37 96-567 .066 A.M. Church
- 12. 11-20-38 121-447 .038 Walnutcreek A.M. Church
- 13. 11-20-38 121-448 .049 Walnutcreek A.M. Church
- 14. 5-26-35 25-545 .81 Trustees of Walnutcreek Amish Church
- 15. 1-29-34 78-339 .125 Amish Menomonee Church at W.C.
- 16. 3-26-31 87-190 .32 Trustees of Amish Menomonee Church



T-9, R-5, Sec. 21
 WALNUTCREEK TWP.
 SCALE 1" = 200'

W.C.
 13

T-9N
 T-8N
 Section 5
 R-5W
 R-4W