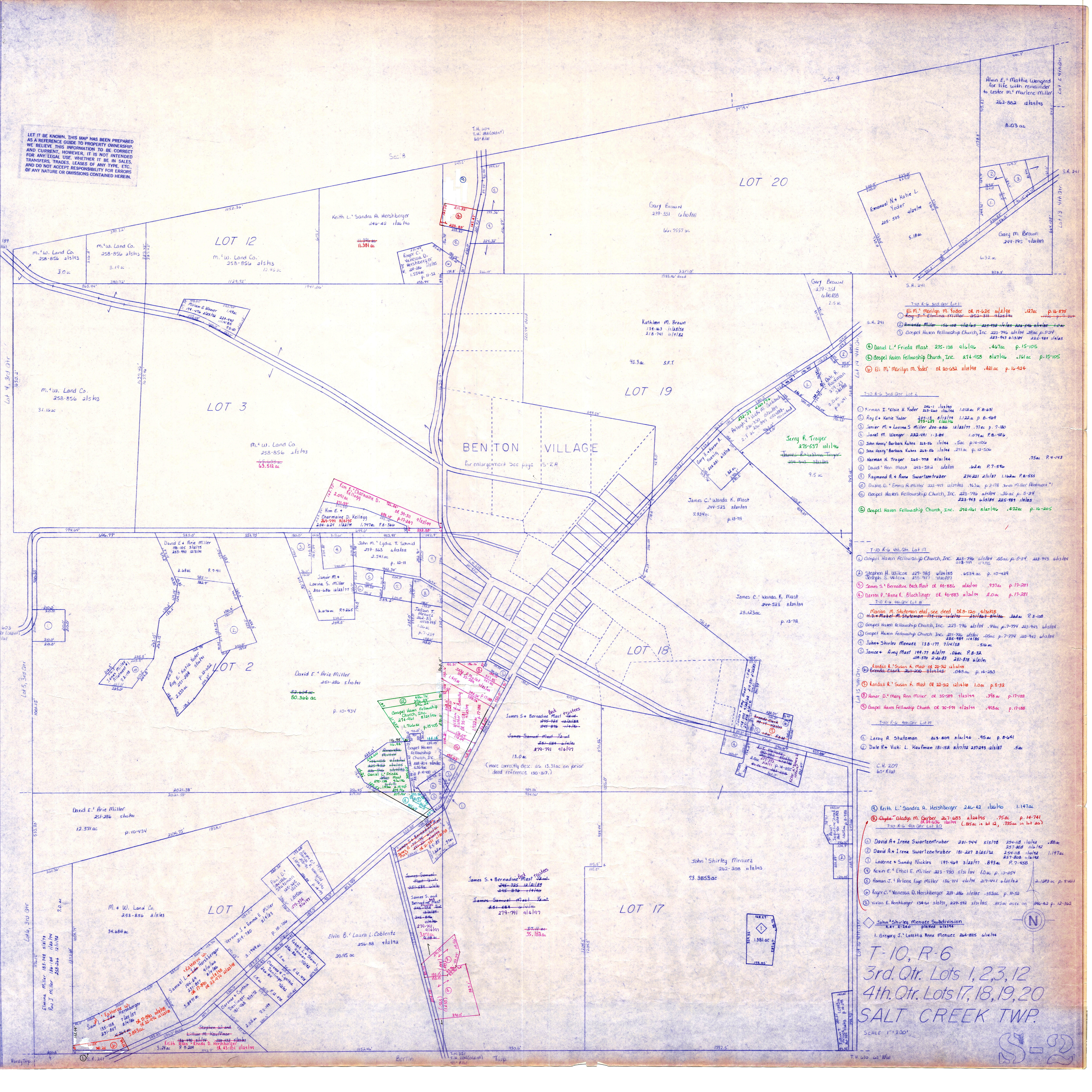


LET IT BE KNOWN, THIS MAP HAS BEEN PREPARED AS A REFERENCE GUIDE TO PROPERTY OWNERSHIP. WE BELIEVE THIS INFORMATION TO BE CORRECT AND CURRENT, HOWEVER, IT IS NOT INTENDED FOR ANY LEGAL USE, WHETHER IT BE IN SALES, TRANSFERS, TRADES, LEASES OF ANY TYPE, ETC., AND DO NOT ACCEPT RESPONSIBILITY FOR ERRORS OF ANY NATURE OR OMISSIONS CONTAINED HEREIN.



- Trp R-6 3rd Qtr Lot 1**
- ① El M. Marilyn M. Yoder of 6-25-11/195 ac .127 ac p. 14-875
 - ② Amanda Miller 156-108 1/16/18 225-432 1/16/18 225-516 1/16/18 1.06 ac p. 5-34
 - ③ Gospel Haven Fellowship Church, Inc. 225-796 1/16/18 225-943 1/16/18 225-989 1/16/18
 - ④ Daniel L. Frieda Mast 275-138 9/16/16 .467 ac p. 15-105
 - ⑤ Gospel Haven Fellowship Church, Inc. 274-958 6/17/16 .161 ac p. 15-105
 - ⑥ El M. Marilyn M. Yoder of 6-25-11/195 ac .481 ac p. 14-824
- Trp R-6 3rd Qtr Lot 2**
- ① Firman I. Felsie H. Yoder 246-1 1/16/16 246-240 1/16/16 1.012 ac P. 8-631
 - ② Roy E. Katie Yoder 227-123 8/12/19 1.122 ac p. 8-489
 - ③ Janior M. + Luanna S. Miller 200-886 12/23/17 .77 ac p. 7-180
 - ④ Janet M. Wenger 222-421 1-3-84 1.079 ac P. 8-406
 - ⑤ John Henry Barbara Kuhns 225-55 1/16/16 .5 ac p. 14-100
 - ⑥ John Henry Barbara Kuhns 225-55 1/16/16 .271 ac p. 12-506
 - ⑦ Norman N. Troyer 245-778 6/16/14 .75 ac P. 4-143
 - ⑧ David Finn Mast 245-582 1/16/18 .62 ac P. 7-516
 - ⑨ Raymond A. + Anne Swartzentruber 234-221 2/1/17 1.162 ac P. 8-555
 - ⑩ Diane D. Emma H. Miller 223-977 12/17/83 .653 ac p. 2-178 3rd Miller Amendment
 - ⑪ Gospel Haven Fellowship Church, Inc. 225-796 1/16/18 .36 ac p. 5-34
 - ⑫ Gospel Haven Fellowship Church, Inc. 223-943 1/16/18 225-989 1/16/18
 - ⑬ Gospel Haven Fellowship Church, Inc. 274-961 6/17/16 .422 ac p. 14-205

- Trp R-6 4th Qtr Lot 7**
- ① Gospel Haven Fellowship Church, Inc. 223-796 1/16/18 .05 ac p. 5-34 223-943 1/16/18 225-989 1/16/18
 - ② Stephen H. Wilcox 227-985 1/16/18 .653 ac p. 10-439
 - ③ Joseph S. Wilcox 225-917 7/10/17
 - ④ James S. Bernadine Beck Mast of 44-886 1/16/19 .937 ac p. 17-201
 - ⑤ Darin P. Anne K. Blochinger of 44-883 1/16/19 .1 ac p. 17-201
- Trp R-6 4th Qtr Lot 8**
- ① Marion M. Stutzman et al see deed 08-120 4/16/18
 - ② H. + Mabel M. Stutzman 175-10 1/16/16 211-103 1/16/16 .26 ac P. 3-100
 - ③ Gospel Haven Fellowship Church, Inc. 223-796 1/16/18 .94 ac p. 7-774 223-943 1/16/18
 - ④ Gospel Haven Fellowship Church, Inc. 223-796 1/16/18 .05 ac p. 7-774 223-943 1/16/18
 - ⑤ John + Shirley Menuez 138-177 7/14/58 .51 ac
 - ⑥ Janice + Amy Mast 197-77 6/17/17 .06 ac P. 8-32
 - ⑦ Janice + Amy Mast 211-570 2-22-83 251-878 6/16/16

- Trp R-6 4th Qtr Lot 9**
- ① Randall R. Susan K. Mast of 22-32 1/16/18 1.0 ac p. 8-32
 - ② Honor D. Mary Ann Miller of 35-589 7/13/19 .396 ac p. 17-188
 - ③ Gospel Haven Fellowship Church of 35-591 4/23/17 .493 ac p. 17-188

- Trp R-6 4th Qtr Lot 10**
- ① Leroy A. Stutzman 225-809 1/16/14 .95 ac p. 8-641
 - ② Dale R. + Vicki L. Kaufman 181-18 1/17/12 257-943 1/16/17 .5 ac

④ Keith L. Sandra A. Hershberger 246-42 1/16/16 1.147 ac

⑤ Clyde + Gladys M. Gerber 247-683 1/16/18 .75 ac p. 14-761
 of 247-683 1/16/18 L. 05 ac in lot 12, 795 ac in lot 20

Trp R-6 4th Qtr Lot 20

- ① David + Irene Swartzentruber 201-744 5/15/16 254-118 1/16/12 .88 ac 257-808 1/16/12
- ② David + Irene Swartzentruber 181-227 8/15/12 254-118 1/16/12 1.197 ac 257-808 1/16/12
- ③ Luverne + Sandy Nickles 197-449 3/23/17 .893 ac P. 7-458
- ④ Kevin E. + Ethel E. Miller 223-730 5/13/14 1.0 ac p. 10-254
- ⑤ Roman J. + Arlene Fay Miller 186-711 4/1/14 217-441 1/16/12 2.1023 ac p. 9-261
- ⑥ Roger C. + Vanessa D. Hershberger 227-286 1/16/18 .353 ac p. 11-52
- ⑦ Vivian E. Hershberger 134-11 1/16/17 217-572 5/13/18 .815 ac assec on 246-42 p. 12-362

John + Shirley Menuez Subdivision
 Plat 2-246 PLAT 2 1/15/14

- 1. Gregory J. + Loretta Anne Menuez 264-825 6/16/14

T-10, R-6
 3rd Qtr. Lots 1, 2, 3, 12
 4th Qtr. Lots 17, 18, 19, 20
 SALT CREEK TWP.
 SCALE 1" = 200'

