

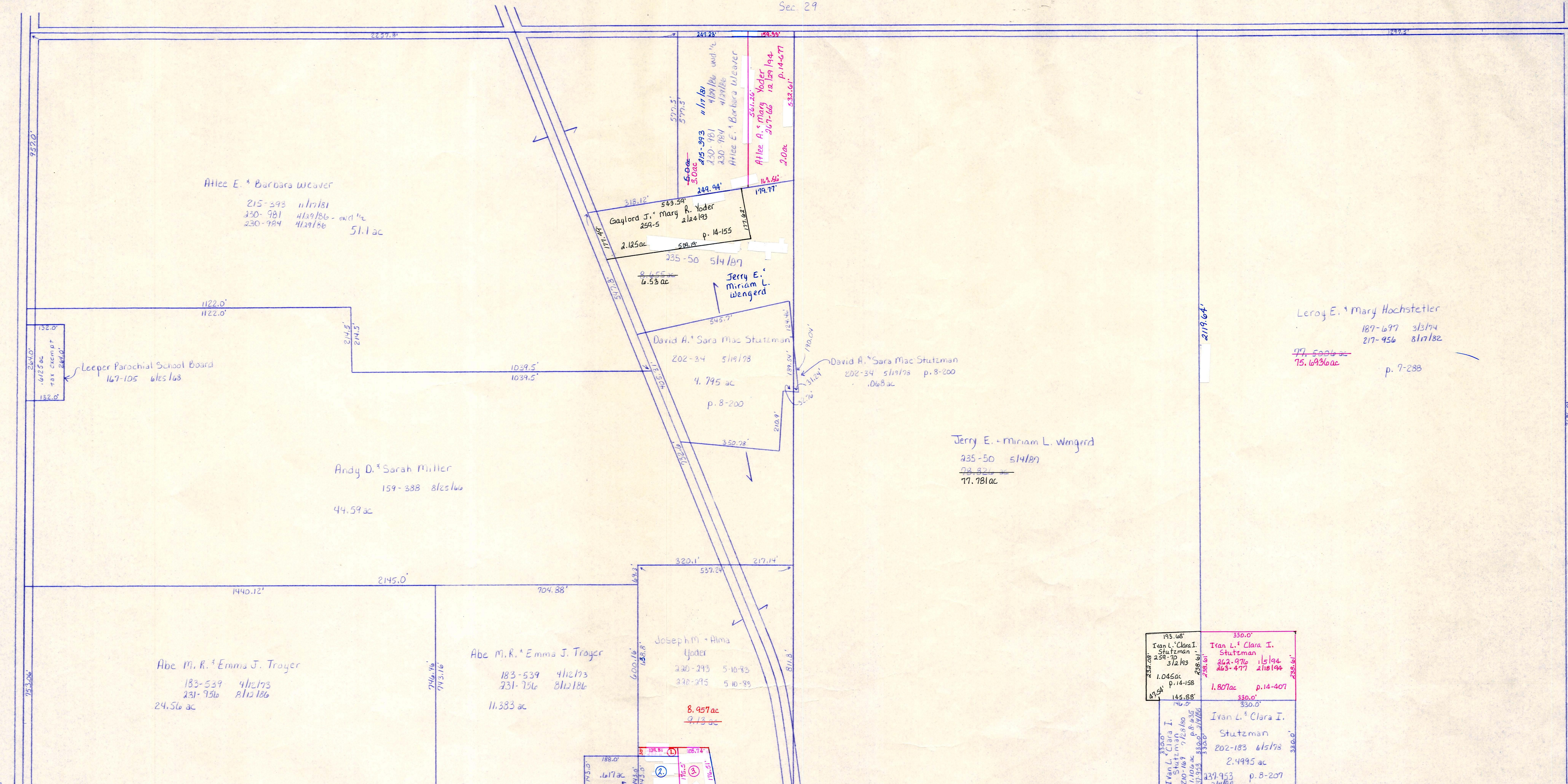
T.H. 601  
T.H. 187 (Old n<sup>o</sup>)  
60' R/W

C.H. 201  
60' R/W

Sec. 29

T.H. 609  
T.H. 230 (Old n<sup>o</sup>)  
40' R/W

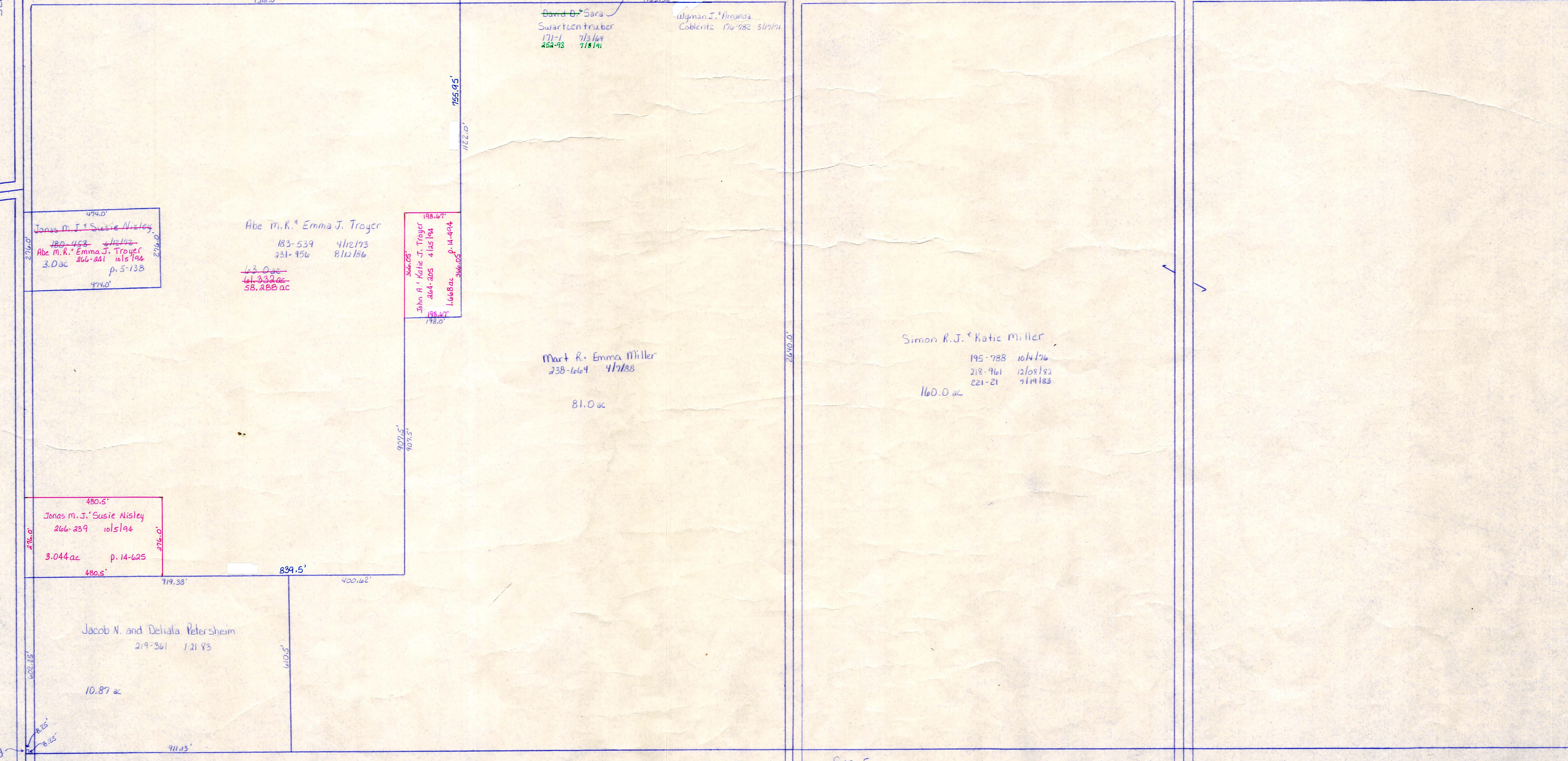
T.H. 609  
T.H. 439 (Old n<sup>o</sup>)  
40' R/W



Sec. 31

183-528 Ferd. & Clara I. Stutzman 212-83 212-83 1.0650 ac p. 14-158	180-0 Ivan L. & Clara I. Stutzman 202-979 202-977 218-146 1.807 ac p. 14-407
145-88 Ivan L. & Clara I. Stutzman 202-183 202-183 2.4995 ac p. 8-207	180-0 Ivan L. & Clara I. Stutzman 202-183 202-183 2.4995 ac p. 8-207

T.H. 509  
T.H. 243 (Old n<sup>o</sup>)  
60' R/W



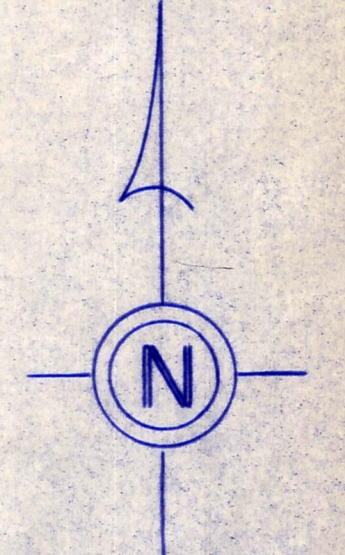
T.H. 601  
T.H. 187 (Old n<sup>o</sup>)  
60' R/W

- ① Wyman J. & Amanda Coblenz 246-728 416/40 .097 ac p. 12-401
- ② Wyman J. & Amanda Coblenz 176-782 511/111 .612 ac p. 5-81
- ③ Ella A. Troyer 266-555 111/124 .479 ac p. 14-642

T.H. 604  
T.H. 188 (Old n<sup>o</sup>)  
60' R/W

C.H. 201  
60' R/W

Sec. 5



T-15, R-12, Sec. 32  
SALT CREEK TWP.

SCALE 1"=200'

LET IT BE KNOWN, THIS MAP HAS BEEN PREPARED AS A REFERENCE GUIDE TO PROPERTY OWNERSHIP. WE BELIEVE THIS INFORMATION TO BE CORRECT AND CURRENT. HOWEVER, IT IS NOT INTENDED FOR ANY LEGAL USE, WHETHER IT BE IN SALES, TRANSFERS, TRADES, LEASES OF ANY TYPE, ETC., AND DO NOT ACCEPT RESPONSIBILITY FOR ERRORS OF ANY NATURE OR OMISSIONS CONTAINED HEREIN.

S-17