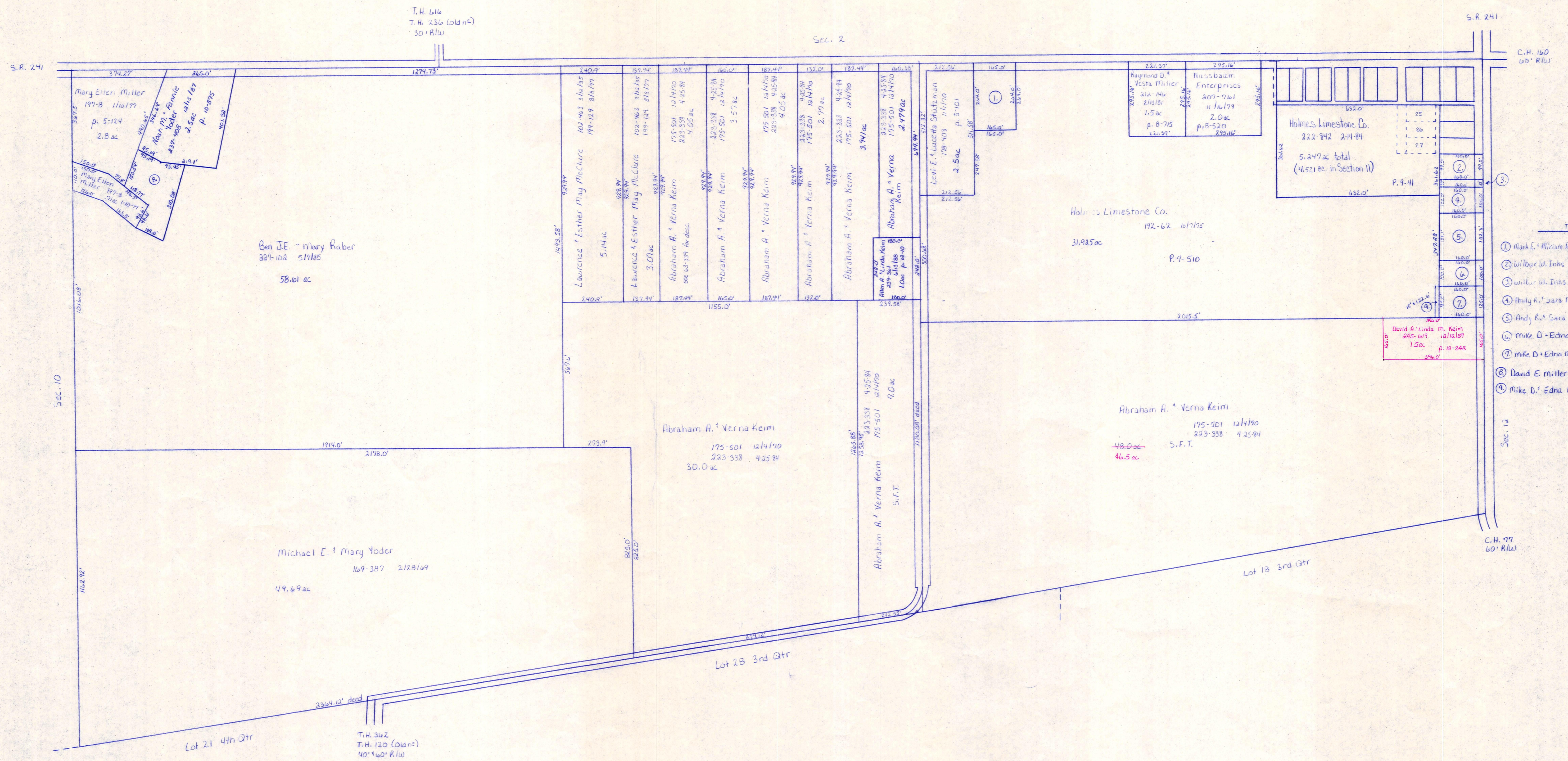


See page S-27A for Mt. Hope Village



- T-14, R-12, Sec. 11
- ① Mark E. Miram & Sons, 190-167, 191-167, 192-167, 193-167, 194-167, 195-167, 196-167, 197-167, 198-167, 199-167, 200-167
  - ② William W. Inks, 126-596, 127-596, 128-596, 129-596, 130-596, 131-596, 132-596, 133-596, 134-596, 135-596, 136-596, 137-596, 138-596, 139-596, 140-596, 141-596, 142-596, 143-596, 144-596, 145-596, 146-596, 147-596, 148-596, 149-596, 150-596, 151-596, 152-596, 153-596, 154-596, 155-596, 156-596, 157-596, 158-596, 159-596, 160-596, 161-596, 162-596, 163-596, 164-596, 165-596, 166-596, 167-596, 168-596, 169-596, 170-596, 171-596, 172-596, 173-596, 174-596, 175-596, 176-596, 177-596, 178-596, 179-596, 180-596, 181-596, 182-596, 183-596, 184-596, 185-596, 186-596, 187-596, 188-596, 189-596, 190-596, 191-596, 192-596, 193-596, 194-596, 195-596, 196-596, 197-596, 198-596, 199-596, 200-596
  - ③ William W. Inks, 121-941, 122-941, 123-941, 124-941, 125-941, 126-941, 127-941, 128-941, 129-941, 130-941, 131-941, 132-941, 133-941, 134-941, 135-941, 136-941, 137-941, 138-941, 139-941, 140-941, 141-941, 142-941, 143-941, 144-941, 145-941, 146-941, 147-941, 148-941, 149-941, 150-941, 151-941, 152-941, 153-941, 154-941, 155-941, 156-941, 157-941, 158-941, 159-941, 160-941, 161-941, 162-941, 163-941, 164-941, 165-941, 166-941, 167-941, 168-941, 169-941, 170-941, 171-941, 172-941, 173-941, 174-941, 175-941, 176-941, 177-941, 178-941, 179-941, 180-941, 181-941, 182-941, 183-941, 184-941, 185-941, 186-941, 187-941, 188-941, 189-941, 190-941, 191-941, 192-941, 193-941, 194-941, 195-941, 196-941, 197-941, 198-941, 199-941, 200-941
  - ④ Andy R. & Sara Mae Miller, 128-591, 129-591, 130-591, 131-591, 132-591, 133-591, 134-591, 135-591, 136-591, 137-591, 138-591, 139-591, 140-591, 141-591, 142-591, 143-591, 144-591, 145-591, 146-591, 147-591, 148-591, 149-591, 150-591, 151-591, 152-591, 153-591, 154-591, 155-591, 156-591, 157-591, 158-591, 159-591, 160-591, 161-591, 162-591, 163-591, 164-591, 165-591, 166-591, 167-591, 168-591, 169-591, 170-591, 171-591, 172-591, 173-591, 174-591, 175-591, 176-591, 177-591, 178-591, 179-591, 180-591, 181-591, 182-591, 183-591, 184-591, 185-591, 186-591, 187-591, 188-591, 189-591, 190-591, 191-591, 192-591, 193-591, 194-591, 195-591, 196-591, 197-591, 198-591, 199-591, 200-591
  - ⑤ Andy R. & Sara Mae Miller, 120-543, 121-543, 122-543, 123-543, 124-543, 125-543, 126-543, 127-543, 128-543, 129-543, 130-543, 131-543, 132-543, 133-543, 134-543, 135-543, 136-543, 137-543, 138-543, 139-543, 140-543, 141-543, 142-543, 143-543, 144-543, 145-543, 146-543, 147-543, 148-543, 149-543, 150-543, 151-543, 152-543, 153-543, 154-543, 155-543, 156-543, 157-543, 158-543, 159-543, 160-543, 161-543, 162-543, 163-543, 164-543, 165-543, 166-543, 167-543, 168-543, 169-543, 170-543, 171-543, 172-543, 173-543, 174-543, 175-543, 176-543, 177-543, 178-543, 179-543, 180-543, 181-543, 182-543, 183-543, 184-543, 185-543, 186-543, 187-543, 188-543, 189-543, 190-543, 191-543, 192-543, 193-543, 194-543, 195-543, 196-543, 197-543, 198-543, 199-543, 200-543
  - ⑥ Mike D. & Edna Miller, 238-546, 239-546, 240-546, 241-546, 242-546, 243-546, 244-546, 245-546, 246-546, 247-546, 248-546, 249-546, 250-546, 251-546, 252-546, 253-546, 254-546, 255-546, 256-546, 257-546, 258-546, 259-546, 260-546, 261-546, 262-546, 263-546, 264-546, 265-546, 266-546, 267-546, 268-546, 269-546, 270-546, 271-546, 272-546, 273-546, 274-546, 275-546, 276-546, 277-546, 278-546, 279-546, 280-546, 281-546, 282-546, 283-546, 284-546, 285-546, 286-546, 287-546, 288-546, 289-546, 290-546, 291-546, 292-546, 293-546, 294-546, 295-546, 296-546, 297-546, 298-546, 299-546, 300-546
  - ⑦ Mike D. & Edna Miller, 238-546, 239-546, 240-546, 241-546, 242-546, 243-546, 244-546, 245-546, 246-546, 247-546, 248-546, 249-546, 250-546, 251-546, 252-546, 253-546, 254-546, 255-546, 256-546, 257-546, 258-546, 259-546, 260-546, 261-546, 262-546, 263-546, 264-546, 265-546, 266-546, 267-546, 268-546, 269-546, 270-546, 271-546, 272-546, 273-546, 274-546, 275-546, 276-546, 277-546, 278-546, 279-546, 280-546, 281-546, 282-546, 283-546, 284-546, 285-546, 286-546, 287-546, 288-546, 289-546, 290-546, 291-546, 292-546, 293-546, 294-546, 295-546, 296-546, 297-546, 298-546, 299-546, 300-546
  - ⑧ David E. Miller, 237-910, 238-910, 239-910, 240-910, 241-910, 242-910, 243-910, 244-910, 245-910, 246-910, 247-910, 248-910, 249-910, 250-910, 251-910, 252-910, 253-910, 254-910, 255-910, 256-910, 257-910, 258-910, 259-910, 260-910, 261-910, 262-910, 263-910, 264-910, 265-910, 266-910, 267-910, 268-910, 269-910, 270-910, 271-910, 272-910, 273-910, 274-910, 275-910, 276-910, 277-910, 278-910, 279-910, 280-910, 281-910, 282-910, 283-910, 284-910, 285-910, 286-910, 287-910, 288-910, 289-910, 290-910, 291-910, 292-910, 293-910, 294-910, 295-910, 296-910, 297-910, 298-910, 299-910, 300-910
  - ⑨ Mike D. & Edna Miller, 289-285, 290-285, 291-285, 292-285, 293-285, 294-285, 295-285, 296-285, 297-285, 298-285, 299-285, 300-285

T-14, R-12, Sec. 11  
SALT CREEK TWP.

LET IT BE KNOWN, THIS MAP HAS BEEN PREPARED AS A REFERENCE GUIDE TO PROPERTY OWNERSHIP. WE BELIEVE THIS INFORMATION TO BE CORRECT AND CURRENT. HOWEVER, IT IS NOT INTENDED FOR ANY LEGAL USE, WHETHER IT BE IN SALES, TRANSFERS, TRADES, LEASES OF ANY TYPE, ETC., AND DO NOT ACCEPT RESPONSIBILITY FOR ERRORS OF ANY NATURE OR OMISSIONS CONTAINED HEREIN.

S-27