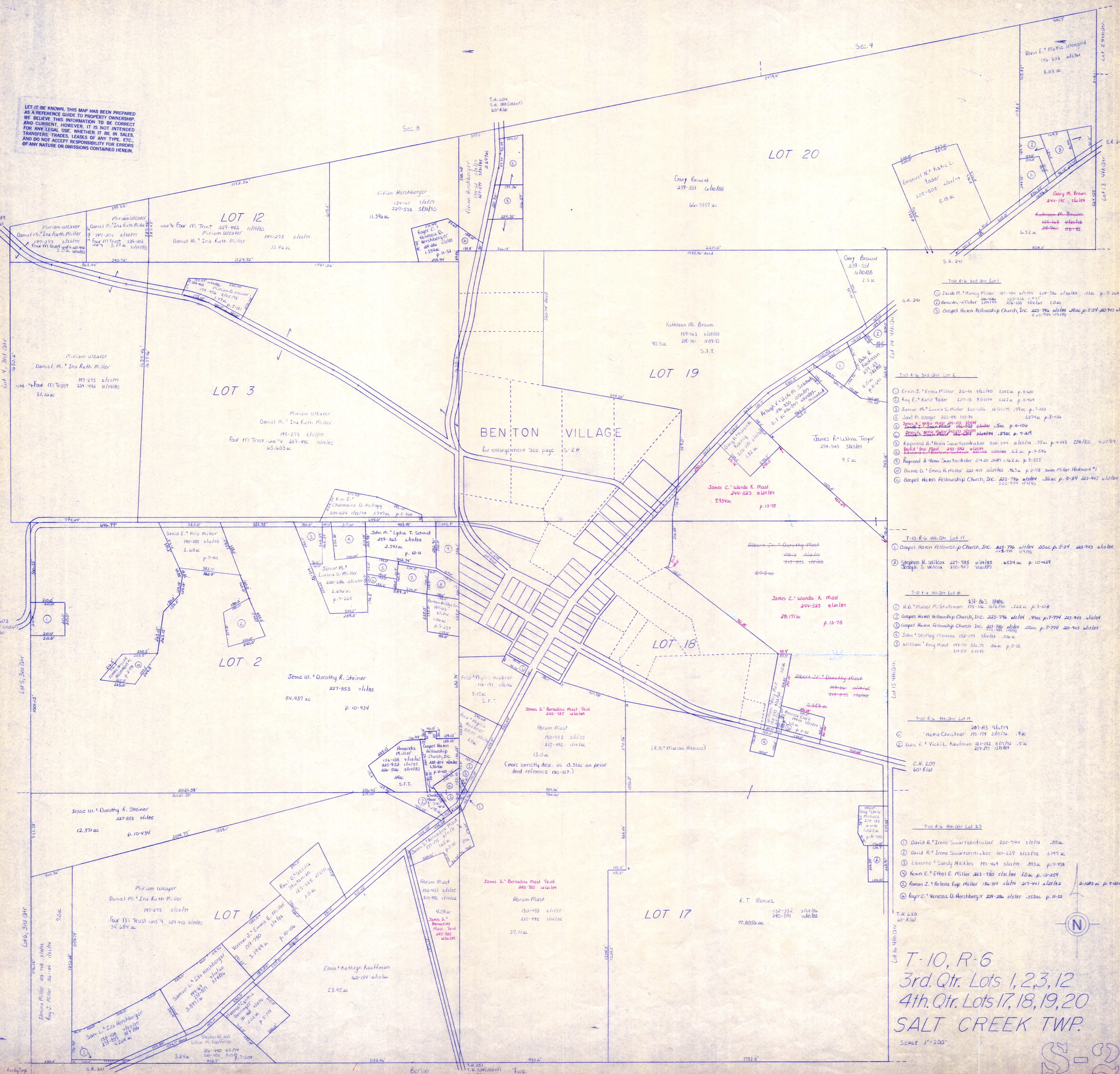


LET IT BE KNOWN, THIS MAP HAS BEEN PREPARED AS A REFERENCE GUIDE TO PROPERTY OWNERSHIP. WE BELIEVE THIS INFORMATION TO BE CORRECT AND CURRENT, HOWEVER, IT IS NOT INTENDED FOR ANY LEGAL USE, WHETHER IT BE IN SALES, TRANSFERS, TRADES, LEASES OF ANY TYPE, ETC., AND DO NOT ACCEPT RESPONSIBILITY FOR ERRORS OF ANY NATURE OR OMISSIONS CONTAINED HEREIN.



- T-10 R-6 3rd Qtr Lot 1**
- 1 Jacob M. Nancy Miller 185-994 4/18/74 209-786 4/18/74 .11 ac p. 7-209
 - 2 Amanda Miller 204-175 1/26/78 156-108 2/12/78 1.0 ac
 - 3 Gospel Haven Fellowship Church, Inc. 225-796 4/18/74 .28 ac p. 5-34 223-943 4/18/74 2.5-994 1/13/75
- T-10 R-6 3rd Qtr Lot 2**
- 1 Ervin J. Erma Miller 210-48 9/21/80 1.02 ac p. 8-481
 - 2 Roy E. Katie Yoder 207-13 2/13/79 1.12 ac p. 8-409
 - 3 Junior M. Lorna S. Miller 200-058 12/13/79 .99 ac p. 7-180
 - 4 Janel M. Berger 222-441 105-84 1.07 ac p. 8-406
 - 5 James H. Irene Miller 201-239 2/13/79 .5 ac p. 4-106
 - 6 Joseph S. Irene Miller 201-239 2/13/79 .5 ac p. 4-106
 - 7 Raymond A. Anna Swartzentruber 208-544 4/18/74 .75 ac p. 4-143 224-950 4-21-84
 - 8 David Ann Mast 244-523 4/18/74 .63 ac p. 7-546
 - 9 Raymond A. Anna Swartzentruber 224-401 2/18/78 1.12 ac p. 8-525
 - 10 Diane D. Erma Miller 224-401 2/18/78 .63 ac p. 2-178 200-111 4/18/74
 - 11 Gospel Haven Fellowship Church, Inc. 223-796 4/18/74 .28 ac p. 5-34 223-943 4/18/74 2.5-994 1/13/75
- T-10 R-6 4th Qtr Lot 7**
- 1 Gospel Haven Fellowship Church, Inc. 223-796 4/18/74 .28 ac p. 5-34 223-943 4/18/74 2.5-994 1/13/75
 - 2 Stephen H. Wilcox 227-785 4/18/74 .653 ac p. 10-449
 - 3 Joseph S. Wilcox 225-911 1/10/81
- T-10 R-6 4th Qtr Lot 8**
- 1 M.D. Mabel M. Stateman 175-116 10/2/70 .262 ac p. 3-108
 - 2 Gospel Haven Fellowship Church, Inc. 223-796 4/18/74 .28 ac p. 5-34 223-943 4/18/74 2.5-994 1/13/75
 - 3 Gospel Haven Fellowship Church, Inc. 223-796 4/18/74 .28 ac p. 5-34 223-943 4/18/74 2.5-994 1/13/75
 - 4 John Shirley Menzies 158-177 7/1/78 .51 ac
 - 5 William King Mast 199-77 8/2/77 .06 ac p. 8-32 219-510 2-28-85
- T-10 R-6 4th Qtr Lot 19**
- 1 Nemie Christner 201-03 4/11/74 .9 ac
 - 2 Dale K. Vicki L. Kaufman 181-132 8/17/72 .5 ac 229-275 12/8/87
- T-10 R-6 4th Qtr Lot 20**
- 1 David A. Irene Swartzentruber 201-744 5/18/74 .88 ac
 - 2 David A. Irene Swartzentruber 181-227 8/22/72 1.197 ac
 - 3 Laverne Sandy Nickles 191-409 5/18/74 .89 ac p. 7-938
 - 4 Kevin E. Ethel E. Miller 223-780 5/18/74 1.0 ac p. 10-254
 - 5 Roman T. Arlene Faye Miller 186-211 4/17/74 217-441 5/18/74 2.1083 ac p. 9-201
 - 6 Roger C. Vanessa D. Hershberger 229-286 4/18/74 .353 ac p. 11-50

T-10, R-6
3rd. Qtr. Lots 1, 2, 3, 12
4th. Qtr. Lots 17, 18, 19, 20
SALT CREEK TWP.
SCALE 1"=200'

S-2