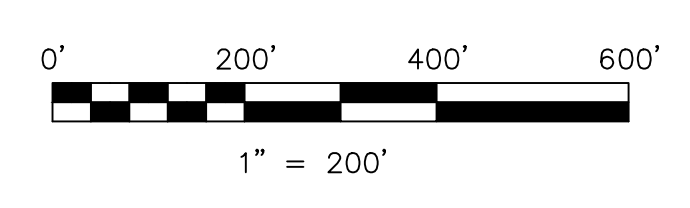


Section 10 T-8 R-9
Richland Township (R-24)

(R-29)
Sec. 6
T-8 R-8

2100522001 John E. Jr. and Cynthia M. Beeker
OR.185-3213 10/12/2005
0.083 ac p.19-523



S.F.T. new survey required
for next transfer

LET IT BE KNOWN, THIS MAP HAS BEEN PREPARED AS A REFERENCE GUIDE TO PROPERTY OWNERSHIP. WE BELIEVE THIS INFORMATION TO BE CORRECT AND CURRENT, HOWEVER IT IS NOT INTENDED FOR ANY LEGAL USE, WHETHER IT BE IN SALES, TRANSFERS, TRADES, LEASES OF ANY TYPE, ETC., AND DO NOT ACCEPT RESPONSIBILITY FOR ERRORS OF ANY NATURE OR OMISSIONS CONTAINED HEREIN.

Last Revision: 3/13/2009
T-8, R-9, Section 1
Richland Twp.
Holmes County, Ohio

R-25